



## Cat.6 Patch Cords

R&Mfreenet Cat.6 high end patch cords are used for connecting the network equipment to patch panels and telecommunications outlets. Using the patented R&M RJ45 plug with its unique IDC technology they are suitable for power delivery (PoE) up to the highest levels. They are suitable for frequencies of up to 250 MHz.

## Features of Cat.6 Patch Cord

- Fulfills the requirements of Category 6, Class E (250MHz) according to the present standard of the ISO/IEC 11801
- Complies with the Category 6 specifications of the IEC 60603-7-4 / IEC 60603-7-5 components standard with the Cat.6 connection module
- Supports PoE (IEEE 802.3af), PoEP (IEEE 802.3at), 4Ppoe (IEEE 802.3bt) and is compatible to IEC 60512-99-001/002
- The flexible cable meets the extended TCL specification of level 2 according to IEC 61156-6 for frequencies above 100 MHz
- IDC wire termination according to IEC 60352-3
- Tested according to IEC 61935-2
- Strain relief according to TIA/EIA 568.2-D
- Each individual patch cord is tested
- Can also be used as Cat.5e (backwards compatible)
- Slim plug dimensions: 41.1 x 11.7 x 6.6mm (length x width x depth)
- Ultra stable strain relief
- Lengths from 0.2 to 20m available
- Impedance of 100Ω
- LSZH and LSFRZH versions
- R&M security system and colour coding
- R&M environment system
- 3P certified (in channel)



## Cat.6 Patch Cords Data Sheet

### Materials

Plug Housing	Contacts	Contact Plating	Shielding
UL 94-V0 polycarbonate	Bronze (CuSn6)	0,7 µm selective gold plate	Tin-plated brass

### Electrical Characteristics

General	Current Rating	Dielectric Withstanding Voltage	Insulation Resistance @20°C 500VDC
Compliant to 60603-7	1.5A @ 25°C	1000 VDC	5000 MΩ * km

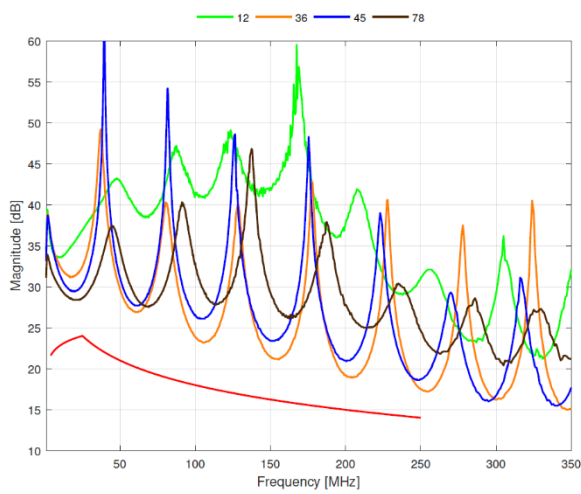
### Mechanical Characteristics

Plug Tolerances and Dimensions	Environmental Characteristics
Compliant to IEC 60603-7	Operating Temperature -20°C to +60°C

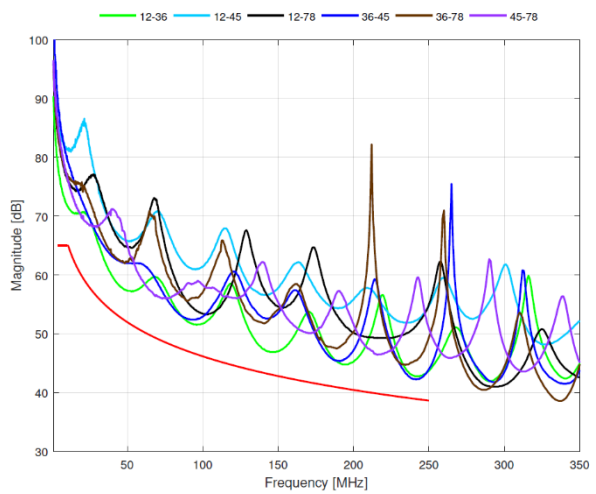
## Patch Cord Characteristics Cat.6

	U/UTP	S/FTP
Inner conductor diameter	AWG24/7	AWG26/7
Number of pairs	4	4
Screen per pair	None	AL/ Foil
Outer screen	None	Cu-braid
Jacket	LSZH	LSFRZH
Bending radius	≥35mm operation (without load) ≥60mm installation (with load)	≥35mm operation (without load) ≥60mm installation (with load)
Outer diameter	max. 6.0 mm	max. 6.0 mm
Wiring method	standard: TIA568A, optional: TIA568B or crossover	
Jacket colours	grey, yellow, red, blue, green, orange, black, white, heather violet* (* in shielded version only)	

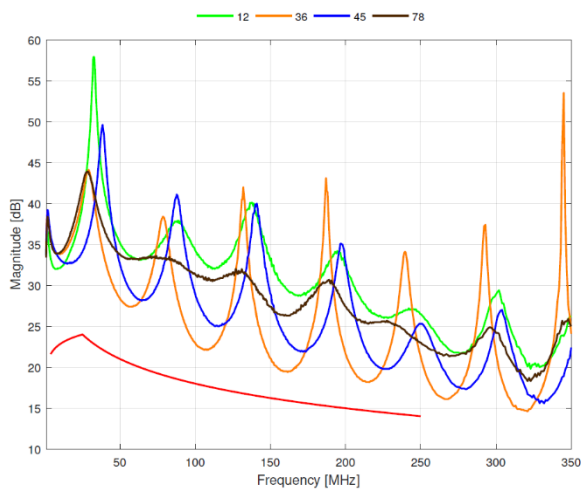
Typical Return Loss Cat.6 U/UTP patch cord 2m



Typical NEXT Cat.6 U/UTP patch cord 2m



Typical Return Loss Cat.6 S/FTP patch cord 2m



Typical NEXT Cat.6 S/FTP patch cord 2m

