

# xComfort Room Controller Touch

## CRCA-00/08, CRCA-00/09, CRCA-00/10, CRCA-00/11



Powering Business Worldwide



Danger  
Lebensgefahr  
Danger de mort  
Nebezpečí  
Niebezpieczeństwo  
Fare  
Perigo  
Életveszély  
Pericolo di morte  
Fare  
Levensgevaar

Perigo  
Niebezpieczeństwo  
Varning  
Vaara  
Hayati Tehlike  
Pericol  
Опасность  
κίνδυνος θανάτου  
危險  
خطر على الحياة



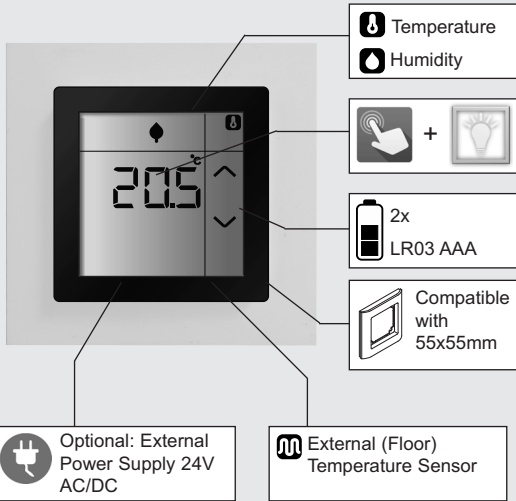
Installation by electricians only  
Montage nur durch Elektrofachkräfte  
Montage uniquement par un électricien  
Montáž pouze osobami s elektrotechnickou kvalifikací  
Må kun installeres af en aut. el-installatør  
Debe ser installado por un profesional eléctrico  
Csak szakképzett személy szerelheti  
Montaggio esclusivamente ad opera di personale specializzato  
Må monteres av autorisert installatør Gr.L  
Montage alleen door elektromonteurs  
Deve ser instalado por um profissional  
Montaz tylko przez uprawnionych instalatorów  
Får endast utföras av behörig elektriker  
Asennus vain sähköasentajan toimesta  
Sadece uzman kisiler monte edebilir  
Instalare numai de catre electricieni

Монтаж может производить только элекрик

Εγκατάσταση μόνο από ηλεκτρολόγους

仅允许合格电气技师进行安装

التركيب فقط من قبل عمال كهرباء اخصاصيين



Temperature

Humidity



2x  
LR03 AAA

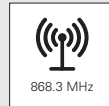
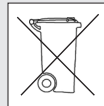
Compatible  
with  
55x55mm



Optional: External  
Power Supply 24V  
AC/DC



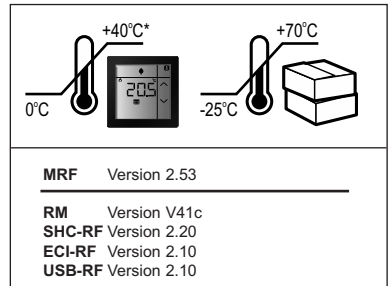
External (Floor)  
Temperature Sensor



Controller	Type	Color
CRCA-00/08	Temperature, Humidity	Pure white
CRCA-00/09	Temperature, Humidity	Anthracite
CRCA-00/10	Temperature, Humidity	Traffic white
CRCA-00/11	Temperature, Humidity	Alpine white

### Technical Data / Technische gegevens / Tekniske data / Technische Daten / Technická data

Power Supply	
Batteries	3V via 2x LR03 (AAA)
External power supply	12-24 VDC/AC
Internal Temperature sensor	
Range	0 - 40°C
Accuracy	± 0.5°C
External Temperature sensor	PT-1000
Humidity sensor	
Relative humidity range	5 - 95%
Accuracy	± 5% rH
Connections	
Stripping length	6 mm
Cross section	
Solid core	0.14 - 0.5 mm <sup>2</sup>
Stranded core	0.2 - 0.5 mm <sup>2</sup>
Dimensions (H x W x D)	55 x 55 x 21 mm



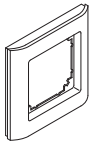
MRF Version 2.53

RM Version V41c

SHC-RF Version 2.20

ECI-RF Version 2.10

USB-RF Version 2.10



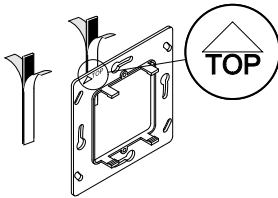
Merten	Gira	Busch Jaeger	Jung	Berker	Siemens	Elko	Kopp
1-M	Standard 55	Carat*	AS	S.1	Delta line	RS16	Alaska
Atelier M	E2	Pur Edelstahl*	A 500	B.1	Delta vita	Plus	
M-Smart	Event	Solo*	A plus	B.3	Delta miro		
M-Arc	Esprit	Future*	A creation	B.7 Glas	Delta profil**		
M-Star	Profil 55	Future linear*					
M-Plan	E22	CZ Future*					
M-Plan II		Busch-balance® SI					
M-Plan Metall							
M-Plan Glas							

\* only with intermediate frame Busch&Jäger

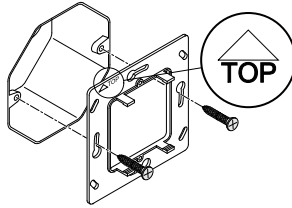
\*\* only with intermediate frame Siemens

## Mounting / Montage / Montering / Montage / Montáž

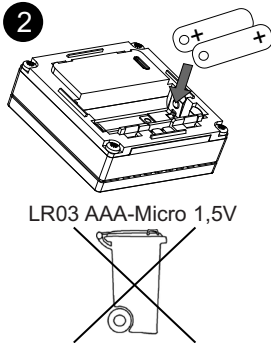
1a



1b

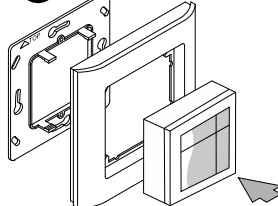


2

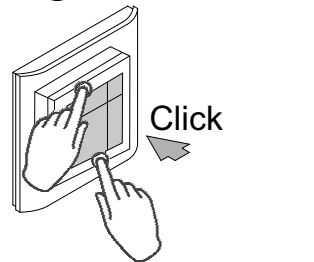


LR03 AAA-Micro 1,5V

3



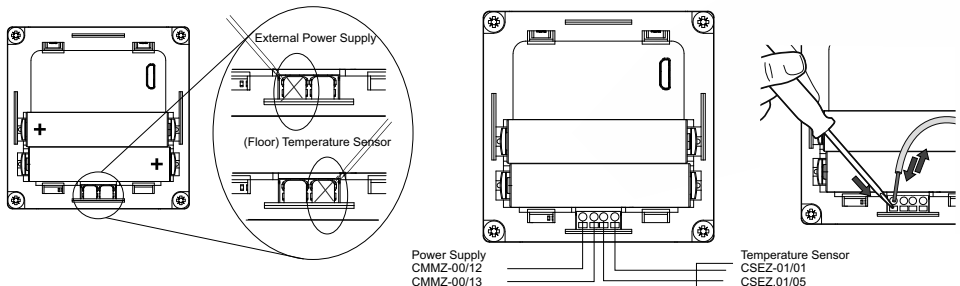
4



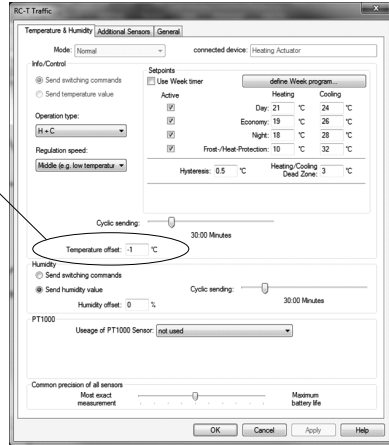
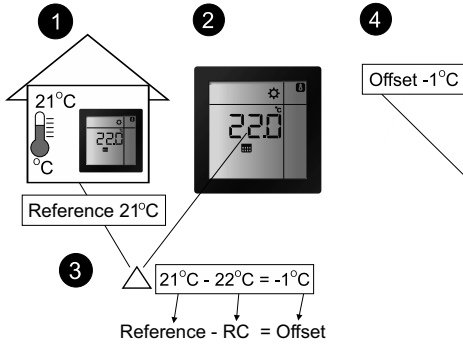
## Wiring diagram/ Aansluitschema / Koblingskemaer / Anschlussplan / Schéma zapojení

(Optional / Optioneel / Valgfri / Optional / Volitelné):

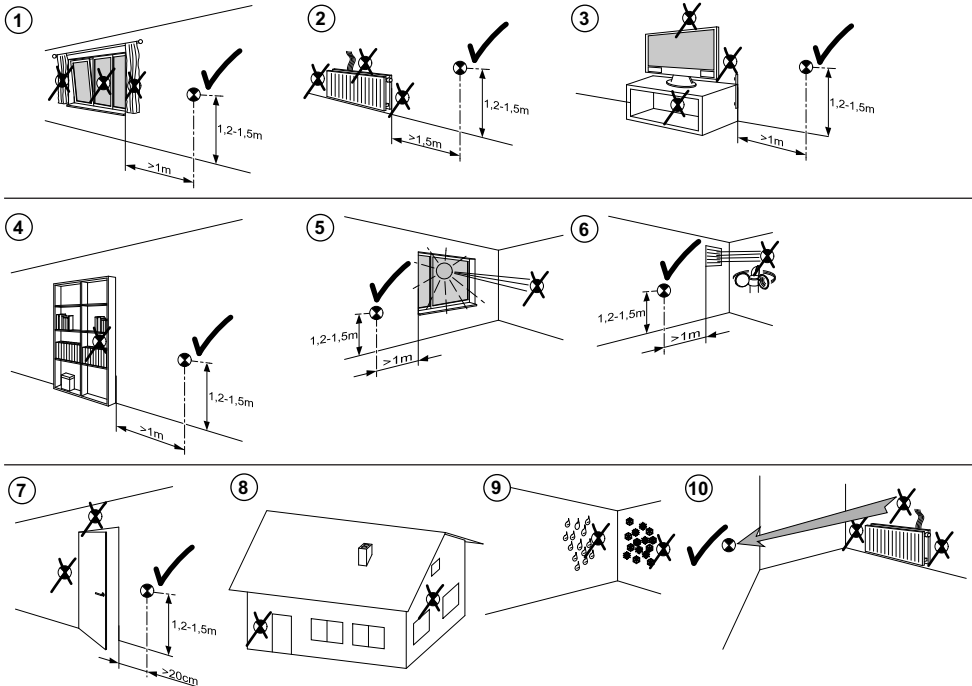
- External power supply / Externe voeding/ Ekstern strømforsyning / Externe Stromversorgung / Externí napájení
- (Floor) Temperature sensor / (Vloer) Temperatuur sensor / (Gulv) Temperatur sensor / (Boden) Temperatursensor / (Podlahové) Teplotní čidlo



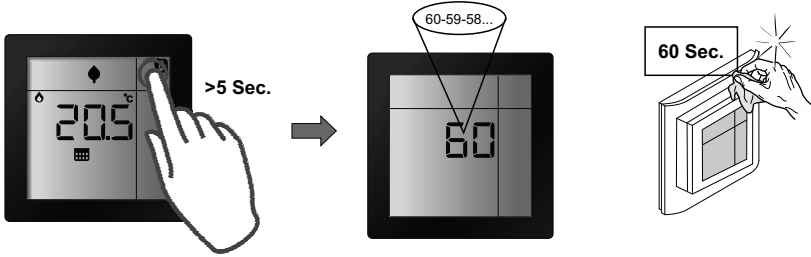
# Offset / Offset / Offset / Abgleich / Offset:



# Positioning / Positionering / Plassering / Positionierung / Umístění:

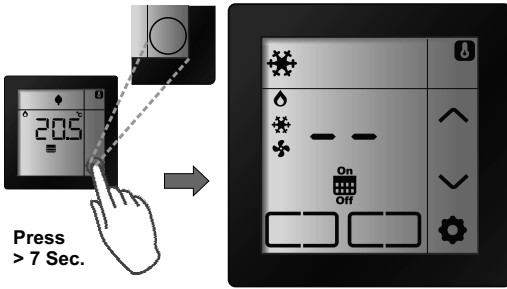


# Cleaning / Reinigen / Rengjøring / Reinigung / Čištění:







## Basic Mode:





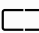
Start basic mode / Start basic mode / Start Basic Mode / Starte Basic Mode / Spustit základní režim



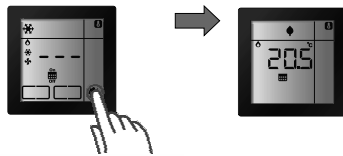
Press  
> 7 Sec.

-  Back to factory default /  
Terug naar fabriekinstellingen /  
Tilbake til fabrikkinstillingen /  
In Auslieferungszustand zurücksetzen /  
Obnovit tovární nastavení
-  Assign or Remove device /  
Apparaat toewijzen of verwijderen /  
Tildele eller fjerne enheten /  
Zuweisen oder Entfernen von Geräten /  
Přirazení nebo odebrání zařízení
-  Stop basic mode or cancel operation /  
Stop basic mode of actie annuleren /  
Stopp basic mode eller avbryte operasjonen /  
Stoppe Basic mode oder Vorgang abbrechen /  
Ukončit základní režim nebo zrušit operaci

-  Select Device / Selecteer apparaat / Velg enhet /  
Gerät auswählen / Vybrat zařízení

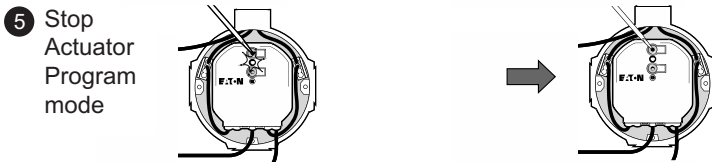
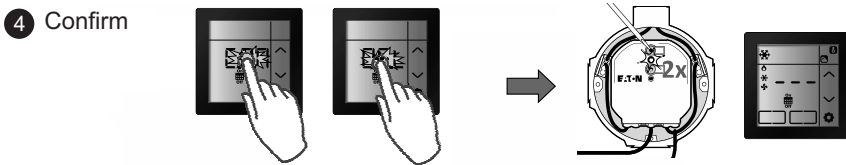
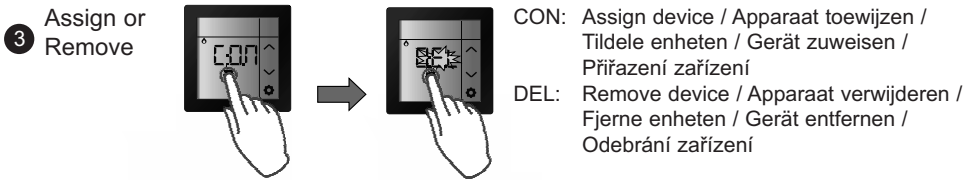
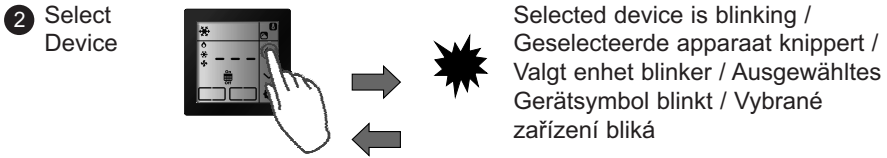
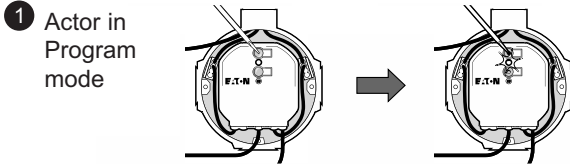
- Device, Function, Type / Apparaat; Functie; Type / Enhet, Funksjon, Type / Gerät, Funktion, Typ / Zařízení, funkce, typ
-  Heating, Analogue Temperature Actuator / Verwarming, Analoge Temperatuur Actuator /  
Oppvarming; Analog temperaturaktuator / Heizung; Heizungsaktor / Topení; teplota (analog) aktor
  -  Heating, On/Off Actuator / Verwarming, Aan/Uit Actuator / Oppvarming; På/Av-aktuator /  
Heizung; Ein/Aus Aktor / Topení; Zapnuto/Vypnuto aktor
  -  Cooling, On/Off Actuator / Koelen, Aan/Uit Actuator / Kjøling; På/Av-aktuator /  
Kühlung; Ein/Aus Aktor / Chlazení; Zapnuto/Vypnuto aktor
  -  Humidity, On/Off Actuator / Luchtvochtigheid, Aan/Uit Actuator / Luftfuktighet; På/Av-aktuator /  
Feuchtigkeit; Ein/Aus Aktor / Vlhkost; Zapnuto/Vypnuto aktor
  -  Pushbutton, All actuators / Drukknop, Alle Actuators / Trykknapp, alle aktuatorer /  
Taster, alle Aktoren / Tlačítko; Všechny aktory

Stop basic mode /  
Stop basic mode /  
Stopp Basic Mode /  
Stoppe Basic Mode /  
Ukončit základní režim

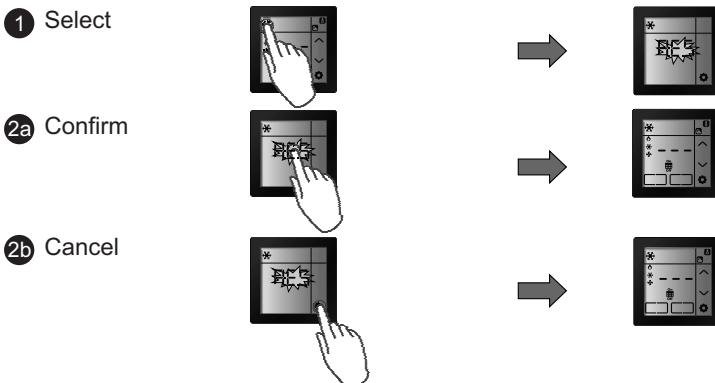


Timeout > 30 Sec.

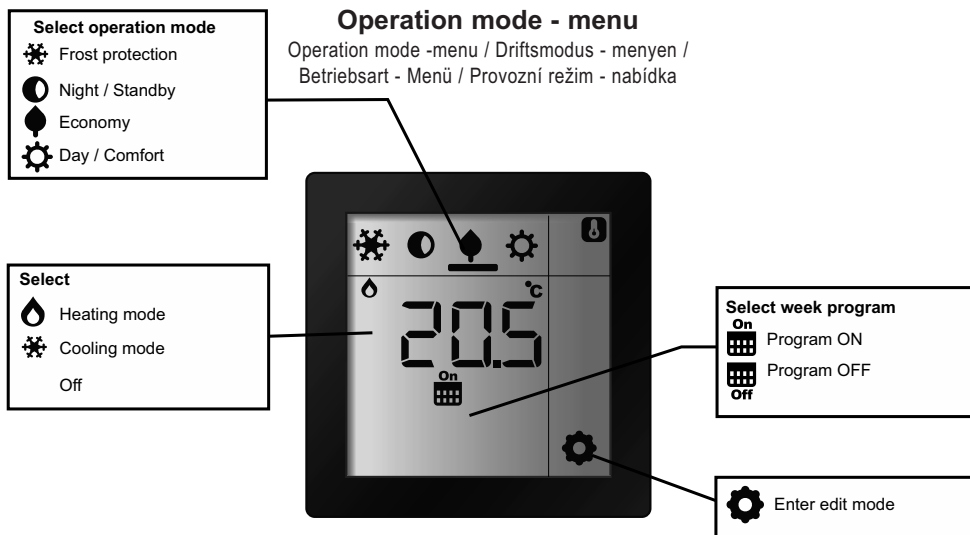
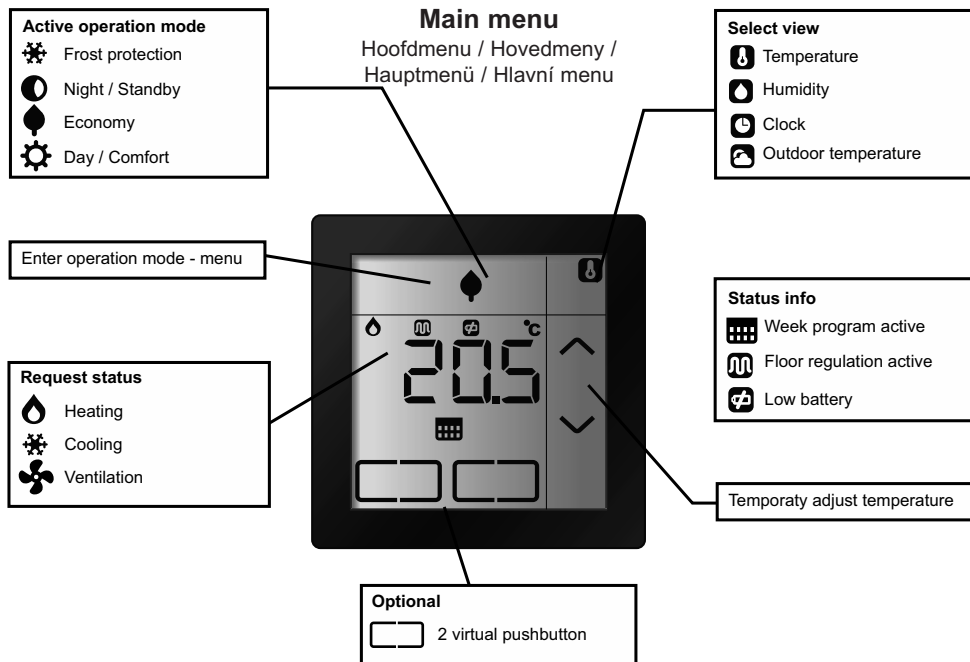
Assign or remove device / Apparaat toewijzen of verwijderen / Tildele eller fjerne enheten / Zuweisen oder Entfernen von Geräten / Přirazení nebo odebrání zařízení



Back to factory default / Terug naar fabrieksinstellingen / Tilbake til fabrikkinstillingen / In Auslieferungszustand zurücksetzen / Obnovení továrního nastavení







# Quick User Guide / Quick User Guide / Hurtigveiledning / Schnellanleitung / Stručný návod k obsluze



## Edit mode - menu


Edit mode - menu /Redigeringsmodus - menyen /  
Edit-Modus - Menü / Editační režim – nabídka


**Edit operation mode**

-  Frost protection
-  Night / Standby
-  Economy
-  Day / Comfort



Change set-point

 Edit week program

 Leave edit mode

EN: For the extended user guide and other detailed information about xComfort visit [www.eaton.eu/xcomfort](http://www.eaton.eu/xcomfort) or [www.xcomfort.com](http://www.xcomfort.com) or use the QR-code

DE: Für das erweiterte Benutzerhandbuch und detaillierte Informationen zum xComfort System besuchen Sie [www.eaton.eu/xcomfort](http://www.eaton.eu/xcomfort) oder [www.xcomfort.de](http://www.xcomfort.de) oder verwenden Sie den QR-code

AT: Für das erweiterte Benutzerhandbuch und detaillierte Informationen zum xComfort System besuchen Sie [www.eaton.eu/xcomfort](http://www.eaton.eu/xcomfort) oder [www.xcomfort.at](http://www.xcomfort.at) oder verwenden Sie den QR-code

NO: For en mer omfattende brukerveiledning og mer informasjon om xComfort, besøk [www.xcomfort.no](http://www.xcomfort.no) eller [www.eaton.eu/xcomfort](http://www.eaton.eu/xcomfort), eller bruk QR-koden

NL: Voor de uitgebreide gebruikershandleiding en meer gedetailleerde informatie over xComfort ga naar [www.eaton.nl/xcomfort](http://www.eaton.nl/xcomfort) of [www.xcomfort.nl](http://www.xcomfort.nl) of maak gebruik van de QR-code

CZ: Pro podrobnější návod k obsluze a další podrobné informace o xComfort návštěvy [www.eaton.eu/xcomfort](http://www.eaton.eu/xcomfort) nebo [www.xcomfort.cz](http://www.xcomfort.cz) nebo použijte QR kód





# Declaration of Conformity

We, EATON Industries (Austria) GmbH  
3943 Schrems, Eugenia 1  
Austria

declare under our sole responsibility that the product (family)

**Eaton - Room Controller Touch,  
CRCA-00/08; CRCA-00/09; CRCA-00/10; CRCA-00/11  
(contains RF-Modul CSCZ-01/xx)**

(the declaration of conformity applies to all listed types within our actual product catalogue)

provided that it is installed, maintained and used in the application intended for, with respect to the relevant manufacturers instructions, installation standards and "good engineering practices"

complies with the provisions of Council directive(s):

RED Directive 2014/53/EU

RoHS Directive 2011/65/EU

based on compliance with following standard(s):

EN301489-3 V2.1.1, EN300220-2 V3.1.1, EN50491-5-1/10, EN50491-5-2/10, EN60950-1/06 + A11/09 + A1/10 + A12/11 + A2/13, EN62479/10

tested by:  
TÜV Austria Services GmbH, Notified Body **CE 0408**  
1230 Vienna, Deutschstrasse 10, Austria

Fernando Ceccarelli

Senior Vice President  
General Manager

12.06.2017

Friedrich Schröder

Director Quality  
& Systems

Affixing date of CE mark: 2016

Doc.Id.: CRCA-0008\_CRCA-0009\_CRCA-0010\_CRCA-0011\_120617