

Select your language

- German
- English
- Spanish
- French
- Dutch
- Italian
- Polish
- Czech
- Russian
- Norwegian Bokmål

Worldwide English

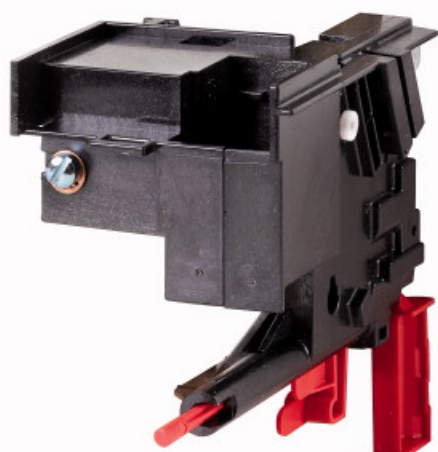


IZMX-TI40-1 - Trip indicator switch IZMX40



184135 IZMX-TI40-1

[Overview](#) [Specifications](#) [Resources](#)



184135 IZMX-TI40-1

Trip indicator switch IZMX40

Alternate Catalog No.

68D2806G31

EL-Nummer (Norway)

4398498

Accessories, Trip indication, interlocked, Can be used in combination with Overcurrent Trip Switches and Remote Reset function., For use with IZMX40..., INX40...

- [Delivery program](#)
- [Design verification as per IEC/EN 61439](#)
- [Technical data ETIM 7.0](#)

Delivery program

Product range

Accessories

Accessories

Trip indication / Reset options

Accessories

Trip indication, interlocked

Can be used in combination with Overcurrent Trip Switches and Remote Reset function.

For use with

IZMX40...

INX40...

Instructions

Standard delivery.

Design verification as per IEC/EN 61439

Operating ambient temperature min.

-25 °C

Operating ambient temperature max.

+70 °C

Technical data ETIM 7.0

Low-voltage industrial components (EG000017) / Accessories for low-voltage switch technology (EC002498)

Electric engineering, automation, process control engineering / Low-voltage switch technology / Component for low-voltage switching technology / Component for low-voltage switch technology (accessories) (ecl@ss10.0.1-27-37-13-

92 [AKN570013])
Type of accessory
Other

Product photo



1230PIC-1246
Photo

3D drawing



1230DRW-1037
Line drawing

CAD data

edz files

- [DA-CE-ETN.IZMX-T40-1](#)
File
(Web)

Download-Center

- [Download-Center \(this item\)](#)
Eaton EMEA Download-Center - download data for this item
- [Download-Center](#)
Eaton EMEA Download-Center

 [Generate data sheet in PDF format](#)

 [Generate data sheet in Excel format](#)

 [Write a comment](#)

[Imprint](#) [Privacy Policy](#) [Legal Disclaimer](#) [Terms and Conditions](#)

© 2022 by Eaton Industries GmbH