

Select your language

- German
- English
- Spanish
- French
- Dutch
- Italian
- Polish
- Czech
- Russian
- Norwegian Bokmål

Worldwide English

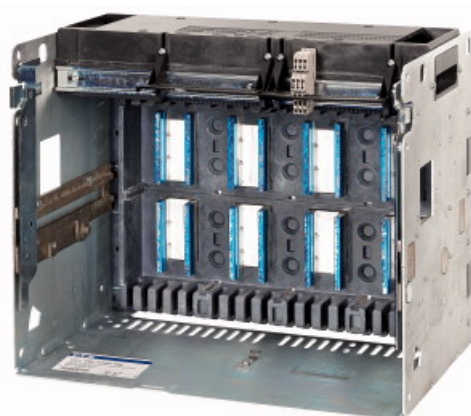


IZMX-CAS404-3200-1 - Cassette 3200A, IZMX404 without control cable connection



183964 IZMX-CAS404-3200-1

[Overview](#) [Specifications](#) [Resources](#)



183964 IZMX-CAS404-3200-1

Cassette 3200A, IZMX404 without control cable connection

Alternate Catalog No. 67C2762A51

EL-Nummer (Norway) 4398373

Accessories, Cassettes, Equipment supplied: arcing chamber cover, Installation type Withdraw able, Rated current In 3200 A, Pole 4, For use with IZMX40...4...W, INX40...4...W

- Delivery program
- Design verification as per IEC/EN 61439
- Technical data ETIM 7.0
- Dimensions

Delivery program

Product range
Accessories
Accessories
Withdraw able units
Accessories
Cassettes
Equipment supplied: arcing chamber cover
Rated current [I_n]
3200 A
Pole
4
For use with
IZMX40...4...W
INX40...4...W

Instructions

Without terminal blocks for the control circuit terminals.
Please order the required quantity separately.
Information about equipment supplied
with arcing chamber cover
Installation type
Withdraw able

Design verification as per IEC/EN 61439

Operating ambient temperature min.

-25 °C

Operating ambient temperature max.

+70 °C

Technical data ETIM 7.0

Low-voltage industrial components (EG000017) / Chassis part power circuit breaker (EC002043)

Electric engineering, automation, process control engineering / Low-voltage switch technology / Circuit breaker (LV < 1 kV) / Chassis part circuit breaker (ecl@ss10.0.1-27-37-04-22 [ACN955011])

Rated current In

3200 A

Number of poles

4

Version as busbar adapter

No

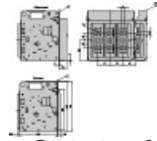
Version as built-in device

Yes

Type of electrical connection of main circuit

Rail connection

Dimensions



Contact surface flange terminal

CAD data

- [Product-specific CAD data](#)
(Web)
- [3D Preview](#)
(Web)

DWG files

- [DA-CD-izmx40_cas4](#)
File
(Web)

edz files

- [DA-CE-ETN.IZMX-CAS404-3200-1](#)
File
(Web)

Step files

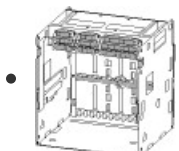
- [DA-CS-izmx40_cas4](#)
File
(Web)

Product photo



[1230PIC-1231](#)
Photo

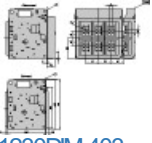
3D drawing



[1230DRV-982](#)

Line drawing

Dimensions single product

- 
1230DIM-403
Line drawing
 Door

Download-Center

- [Download-Center \(this item\)](#)
Eaton EMEA Download-Center - download data for this item
- [Download-Center](#)
Eaton EMEA Download-Center

 [Generate data sheet in PDF format](#)

 [Generate data sheet in Excel format](#)

 [Write a comment](#)

[Imprint](#) [Privacy Policy](#) [Legal Disclaimer](#) [Terms and Conditions](#)

© 2022 by Eaton Industries GmbH