

Select your language

- German
- English
- Spanish
- French
- Dutch
- Italian
- Polish
- Czech
- Russian
- Norwegian Bokmål

Worldwide English



IZMX-CAS404-2500-SEC-1 - Cassette 2500A, IZMX404 m control cable connection



183962 IZMX-CAS404-2500-SEC-1

[Overview](#) [Specifications](#) [Resources](#)



# 183962 IZMX-CAS404-2500-SEC-1

Cassette 2500A, IZMX404 m control cable connection

Alternate Catalog No.

67C2762A51

EL-Nummer (Norway)

4398371

Accessories, Cassettes, Equipment supplied: arcing chamber cover, terminal blocks fully populated, Installation type Withdrawable, Rated current In 2500 A, Pole 4, For use with IZMX40...4...W, INX40...4...W, Control circuit terminal

- Delivery program

Design verification as per IEC/EN 61439

- Technical data ETIM 7.0

- Dimensions

## Delivery program

Product range

Accessories

Accessories

Withdrawable units

Accessories

Cassettes

Equipment supplied: arcing chamber cover, terminal blocks fully populated

Rated current [I<sub>r</sub>]

2500 A

Pole

4

For use with

IZMX40...4...W

INX40...4...W

**Instructions**

With control conductor terminals fully fitted.

Information about equipment supplied

with arcing chamber cover

Control circuit terminal

Installation type

Withdrawable

## Design verification as per IEC/EN 61439

Operating ambient temperature min.

-25 °C

Operating ambient temperature max.

+70 °C

## Technical data ETIM 7.0

Low-voltage industrial components (EG000017) / Chassis part power circuit breaker (EC002043)

Electric engineering, automation, process control engineering / Low-voltage switch technology / Circuit breaker (LV < 1 kV) / Chassis part circuit breaker (ecl@ss10.0.1-27-37-04-22 [ACN955011])

Rated current In

2500 A

Number of poles

4

Version as busbar adapter

No

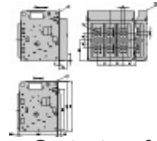
Version as built-in device

Yes

Type of electrical connection of main circuit

Rail connection

## Dimensions



Contact surface flange terminal

## CAD data

- [Product-specific CAD data](#)  
(Web)
- [3D Preview](#)  
(Web)

## DWG files

- [DA-CD-izmx40\\_cas4](#)  
File  
(Web)

## edz files

- [DA-CE-ETN.IZMX-CAS404-2500-SEC-1](#)  
File  
(Web)

## Step files

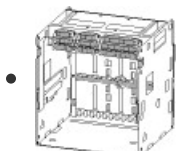
- [DA-CS-izmx40\\_cas4](#)  
File  
(Web)

## Product photo



[1230PIC-1232](#)  
Photo

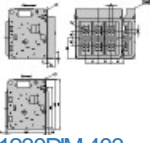
## 3D drawing



[1230DRV-982](#)

Line drawing

## Dimensions single product

-   
1230DIM-403  
Line drawing  
 Door

## Download-Center

- [Download-Center \(this item\)](#)  
Eaton EMEA Download-Center - download data for this item
- [Download-Center](#)  
Eaton EMEA Download-Center

 [Generate data sheet in PDF format](#)

 [Generate data sheet in Excel format](#)

 [Write a comment](#)

[Imprint](#) [Privacy Policy](#) [Legal Disclaimer](#) [Terms and Conditions](#)

© 2022 by Eaton Industries GmbH