





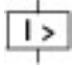
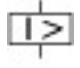
Circuit-breaker, 4p, 100A, box terminals, selectivity protection

Part no. **NZMN2-4-VE100-BT**  
 Catalog No. **147396**

EL-Nummer (Norway) **4358841**

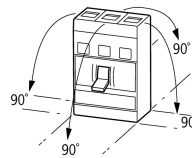
Similar to illustration

### Delivery program

|   |                             |    |  |
|---|-----------------------------|----|--|
| Product range   |                             |    | Circuit-breaker  |
| Protective function   |                             |    | Systems, cable, selectivity and generator protection   |
| Standard/Approval   |                             |    | IEC  |
| Installation type   |                             |    | Fixed  |
| Release system  |                             |    | Electronic release   |
| Construction size   |                             |    | NZM2   |
| Description   |                             |    | R.m.s. value measurement and "thermal memory"<br>Adjustable time delay setting to overcome current peaks $t_r$ at $6 \times I_r$ also infinity (without overload releases)<br>Adjustable delay time $t_{sd}$<br>$i^2 t$ constant function: fixed OFF<br>Set value in neutral conductor is synchronous with set value $I_r$ of main pole. |
| Number of poles   |                             |    | 4 pole   |
| Standard equipment  |                             |    | Box terminal   |
| <b>Switching capacity</b>   |                             |    |  |
| 400/415 V 50 Hz   | $I_{cu}$                    | kA | 50   |
| <b>Rated current = rated uninterrupted current</b>                                  |                             |    |  |
| Rated current = rated uninterrupted current   | $I_n = I_u$                 | A  | 100  |
| Neutral conductor   | % of phase conductor        | %  | 100  |
| <b>Setting range</b>  |                             |    |  |
| Overload trip   |                             |    |  |
|  | $I_r$                       | A  | 50 - 100   |
| Main pole   |                             |    |  |
|  | $I_r$                       | A  | 50 - 100   |
| Short-circuit releases  |                             |    |  |
| Non-delayed   |                             |    |  |
|  | $I_i = I_n \times \dots$    |    | 1200 fixed   |
| Delayed   |                             |    |  |
|  | $I_{sd} = I_r \times \dots$ |    | 2 - 10   |

### Technical data

|   |  |    |  |
|---|--|----|--|
| <b>General</b>  |  |    |  |
| Standards   |  |    | IEC/EN 60947   |
| Protection against direct contact   |  |    | Finger and back of hand proof to VDE 0106 Part 100                             |
| Climatic proofing   |  |    | Damp heat, constant, to IEC 60068-2-78<br>Damp heat, cyclic, to IEC 60068-2-30 |
| Ambient temperature   |  |    |  |
| Ambient temperature, storage  |  | °C | - 40 - + 70  |
| Operation   |  | °C | -25 - +70  |
| Mechanical shock resistance (10 ms half-sinusoidal shock) according to IEC 60068-2-27 |  | g  | 20 (half-sinusoidal shock 20 ms)   |

|  |      |  |  |
|--|------|--|--|
| Safe isolation to EN 61140                   |      |  |  |
| Between auxiliary contacts and main contacts | V AC |  | 500  |
| between the auxiliary contacts               | V AC |  | 300  |
| Mounting position                            |      |  | Vertical and 90° in all directions<br><br>With XFI earth-fault release:<br>- NZM1, N1, NZM2, N2: vertical and 90° in all directions<br>with plug-in unit<br>- NZM1, N1, NZM2, N2: vertical, 90° right/left<br>with withdrawable unit:<br>- NZM3, N3: vertical, 90° right/left<br>- NZM4, N4: vertical<br>with remote operator:<br>- NZM2, N(S)2, NZM3, N(S)3,<br>NZM4, N(S)4: vertical and 90° in all directions |
| Direction of incoming supply                 |      |  | as required  |
| Degree of protection                         |      |  |  |
| Device                                       |      |  | In the operating controls area: IP20 (basic degree of protection)  |
| Enclosures                                   |      |  | With insulating surround: IP40<br>With door coupling rotary handle: IP66   |
| Terminations                                 |      |  | Tunnel terminal: IP10<br>Phase isolator and strip terminal: IP00   |
| Other technical data (sheet catalogue)       |      |  | Temperature dependency, Derating   |

### Circuit-breakers

|   |             |      |       |
|---|-------------|------|-------|
| Rated current = rated uninterrupted current | $I_n = I_u$ | A    | 100   |
| Rated surge voltage invariability           | $U_{imp}$   |      |       |
| Main contacts                               |             | V    | 8000  |
| Auxiliary contacts                          |             | V    | 6000  |
| Rated operational voltage                   | $U_e$       | V AC | 690   |
| Overvoltage category/pollution degree       |             |      | III/3 |
| Rated insulation voltage                    | $U_i$       | V    | 1000  |
| Use in unearthed supply systems             |             | V    | ≤ 690 |

### Switching capacity

|   |          |    |   |
|---|----------|----|---|
| Rated short-circuit making capacity             | $I_{cm}$ |    |   |
| 240 V   | $I_{cm}$ | kA | 187   |
| 400/415 V                                       | $I_{cm}$ | kA | 105   |
| 440 V 50/60 Hz                                  | $I_{cm}$ | kA | 74  |
| 525 V 50/60 Hz                                  | $I_{cm}$ | kA | 53  |
| 690 V 50/60 H                                   | $I_c$    | kA | 40  |
| Rated short-circuit breaking capacity $I_{cn}$  | $I_{cn}$ |    |   |
| $I_{cu}$ to IEC/EN 60947 test cycle O-t-CO      | $I_{cu}$ | kA |   |
| 240 V 50/60 Hz                                  | $I_{cu}$ | kA | 85  |
| 400/415 V 50/60 Hz                              | $I_{cu}$ | kA | 50  |
| 440 V 50/60 Hz                                  | $I_{cu}$ | kA | 35  |
| 525 V 50/60 Hz                                  | $I_{cu}$ | kA | 25  |
| 690 V 50/60 Hz                                  | $I_{cu}$ | kA | 20  |
| $I_{cs}$ to IEC/EN 60947 test cycle O-t-CO-t-CO | $I_{cs}$ | kA |   |
| 240 V 50/60 Hz                                  | $I_{cs}$ | kA | 85  |
| 400/415 V 50/60 Hz                              | $I_{cs}$ | kA | 50  |
| 440 V 50/60 Hz                                  | $I_{cs}$ | kA | 35  |
| 525 V 50/60 Hz                                  | $I_{cs}$ | kA | 25  |
| 690 V 50/60 Hz                                  | $I_{cs}$ | kA | 5   |
|   |          |    | Maximum back-up fuse, if the expected short-circuit currents at the installation location exceed the switching capacity of the circuit-breaker. |
| Rated short-time withstand current              |          |    |   |
| t = 0.3 s                                       | $I_{cw}$ | kA | 1.9   |
| t = 1 s   | $I_{cw}$ | kA | 1.9   |
| Utilization category to IEC/EN 60947-2          |          |    | A   |

|   |            |       |       |
|---|------------|-------|-------|
| Lifespan, mechanical(of which max. 50 % trip by shunt/undervoltage release) | Operations |       | 20000 |
| Lifespan, electrical  |            |       |       |
| AC-1  |            |       |       |
| 400 V 50/60 Hz  | Operations |       | 10000 |
| 415 V 50/60 Hz  | Operations |       | 10000 |
| 690 V 50/60 Hz  | Operations |       | 7500  |
| AC--3   |            |       |       |
| 400 V 50/60 Hz  | Operations |       | 6500  |
| 415 V 50/60 Hz  | Operations |       | 6500  |
| 690 V 50/60 Hz  | Operations |       | 5000  |
| Max. operating frequency  |            | Ops/h | 120   |
| Total break time at short-circuit   |            | ms    | < 10  |

### Terminal capacity

|   |      |                 |   |
|---|------|-----------------|---|
| Standard equipment  |      |                 | Box terminal  |
| Optional accessories                                      |      |                 | Screw terminal<br>Tunnel terminal<br>connection on rear |
| Round copper conductor                                    |      |                 |   |
| Box terminal  |      |                 |   |
| Solid   |      | mm <sup>2</sup> | 1 x (10 - 16)<br>2 x (6 - 16)                           |
| Stranded  |      | mm <sup>2</sup> | 1 x (25 - 185)<br>2 x (25 - 70)                         |
| Tunnel terminal   |      |                 |   |
| Solid   |      | mm <sup>2</sup> | 1 x 16  |
| Stranded  |      |                 |   |
| 1-hole  |      | mm <sup>2</sup> | 1 x (25 - 185)  |
| Bolt terminal and rear-side connection                    |      |                 |   |
| Direct on the switch                                      |      |                 |   |
| Solid   |      | mm <sup>2</sup> | 1 x (10 - 16)<br>2 x (6 - 16)                           |
| Stranded  |      | mm <sup>2</sup> | 1 x (25 - 185)<br>2 x (25 - 70)                         |
| Al circular conductor                                     |      |                 |   |
| Tunnel terminal   |      |                 |   |
| Solid   |      | mm <sup>2</sup> | 1 x 16  |
| Stranded  |      |                 |   |
| Stranded  |      | mm <sup>2</sup> | 1 x (25 - 185)  |
| Cu strip (number of segments x width x segment thickness) |      |                 |   |
| Box terminal  |      |                 |   |
|   | min. | mm              | 2 x 9 x 0.8   |
|   | max. | mm              | 10 x 16 x 0.8<br>(2x) 8 x 15.5 x 0,8                    |
| Bolt terminal and rear-side connection                    |      |                 |   |
| Flat copper strip, with holes                             | min. | mm              | 2 x 16 x 0.8  |
| Flat copper strip, with holes                             | max. | mm              | 10 x 24 x 0.8   |
| Copper busbar (width x thickness)                         |      | mm              |   |
| Bolt terminal and rear-side connection                    |      |                 |   |
| Screw connection  |      |                 | M8  |
| Direct on the switch                                      |      |                 |   |
|   | min. | mm              | 16 x 5  |
|   | max. | mm              | 24 x 8  |
| Control cables  |      |                 |   |
|   |      | mm <sup>2</sup> | 1 x (0.75 - 2.5)<br>2 x (0.75 - 1.5)                    |

### Design verification as per IEC/EN 61439

|  |  |  |  |
|--|--|--|--|
| Technical data for design verification |  |  |  |
|--|--|--|--|

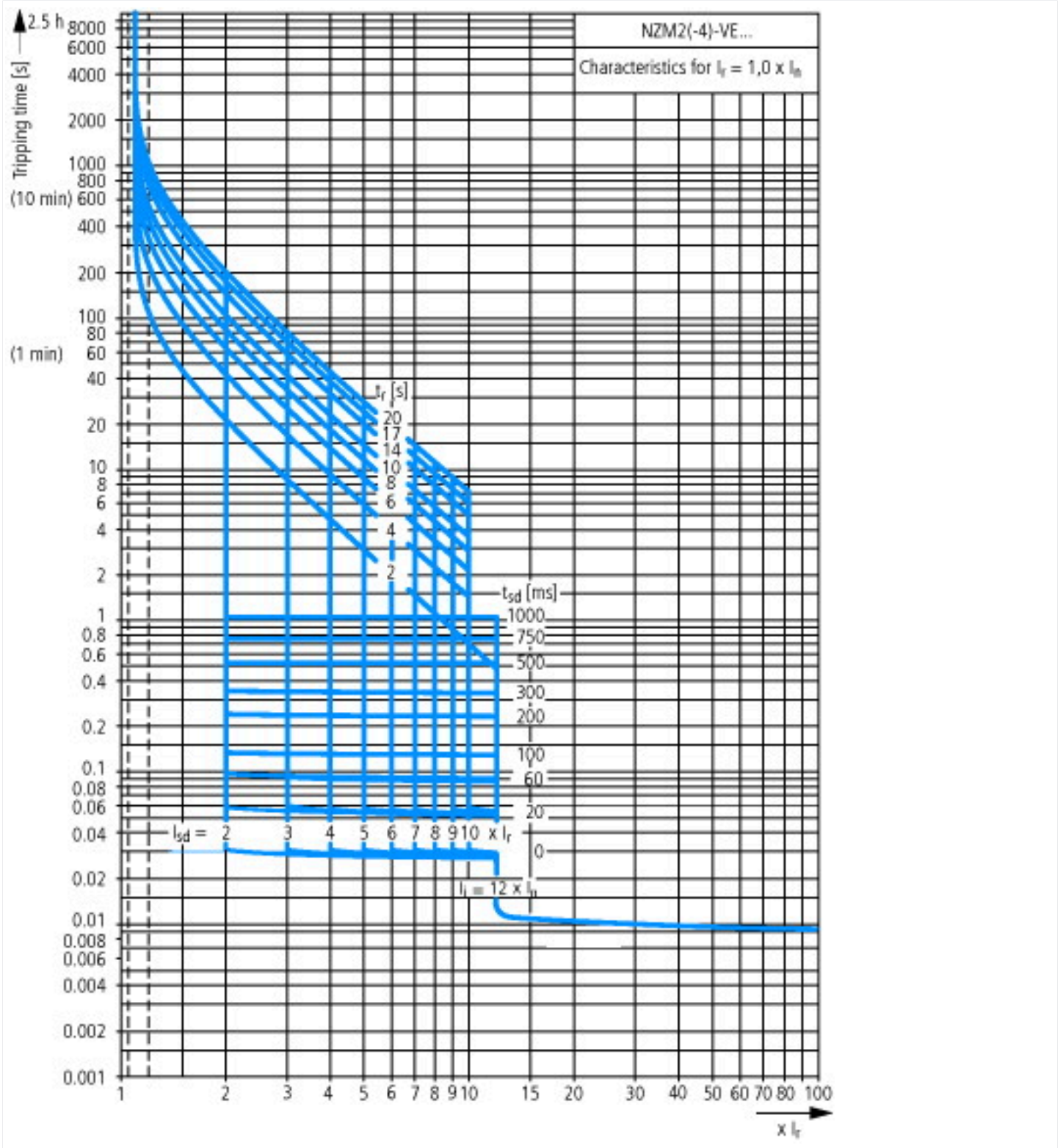
|  |                  |    |  |
|--|------------------|----|--|
| Rated operational current for specified heat dissipation   | I <sub>n</sub>   | A  | 100  |
| Equipment heat dissipation, current-dependent  | P <sub>vid</sub> | W  | 8.25   |
| Operating ambient temperature min.   |                  | °C | -25  |
| Operating ambient temperature max.   |                  | °C | 70   |
| IEC/EN 61439 design verification   |                  |    |  |
| 10.2 Strength of materials and parts   |                  |    |  |
| 10.2.2 Corrosion resistance  |                  |    | Meets the product standard's requirements.   |
| 10.2.3.1 Verification of thermal stability of enclosures   |                  |    | Meets the product standard's requirements.   |
| 10.2.3.2 Verification of resistance of insulating materials to normal heat   |                  |    | Meets the product standard's requirements.   |
| 10.2.3.3 Verification of resistance of insulating materials to abnormal heat and fire due to internal electric effects |                  |    | Meets the product standard's requirements.   |
| 10.2.4 Resistance to ultra-violet (UV) radiation   |                  |    | Meets the product standard's requirements.   |
| 10.2.5 Lifting   |                  |    | Does not apply, since the entire switchgear needs to be evaluated.   |
| 10.2.6 Mechanical impact   |                  |    | Does not apply, since the entire switchgear needs to be evaluated.   |
| 10.2.7 Inscriptions  |                  |    | Meets the product standard's requirements.   |
| 10.3 Degree of protection of ASSEMBLIES  |                  |    | Does not apply, since the entire switchgear needs to be evaluated.   |
| 10.4 Clearances and creepage distances   |                  |    | Meets the product standard's requirements.   |
| 10.5 Protection against electric shock   |                  |    | Does not apply, since the entire switchgear needs to be evaluated.   |
| 10.6 Incorporation of switching devices and components   |                  |    | Does not apply, since the entire switchgear needs to be evaluated.   |
| 10.7 Internal electrical circuits and connections  |                  |    | Is the panel builder's responsibility.   |
| 10.8 Connections for external conductors   |                  |    | Is the panel builder's responsibility.   |
| 10.9 Insulation properties   |                  |    |  |
| 10.9.2 Power-frequency electric strength   |                  |    | Is the panel builder's responsibility.   |
| 10.9.3 Impulse withstand voltage   |                  |    | Is the panel builder's responsibility.   |
| 10.9.4 Testing of enclosures made of insulating material   |                  |    | Is the panel builder's responsibility.   |
| 10.10 Temperature rise   |                  |    | The panel builder is responsible for the temperature rise calculation. Eaton will provide heat dissipation data for the devices. |
| 10.11 Short-circuit rating   |                  |    | Is the panel builder's responsibility. The specifications for the switchgear must be observed.                                   |
| 10.12 Electromagnetic compatibility  |                  |    | Is the panel builder's responsibility. The specifications for the switchgear must be observed.                                   |
| 10.13 Mechanical function  |                  |    | The device meets the requirements, provided the information in the instruction leaflet (IL) is observed.                         |

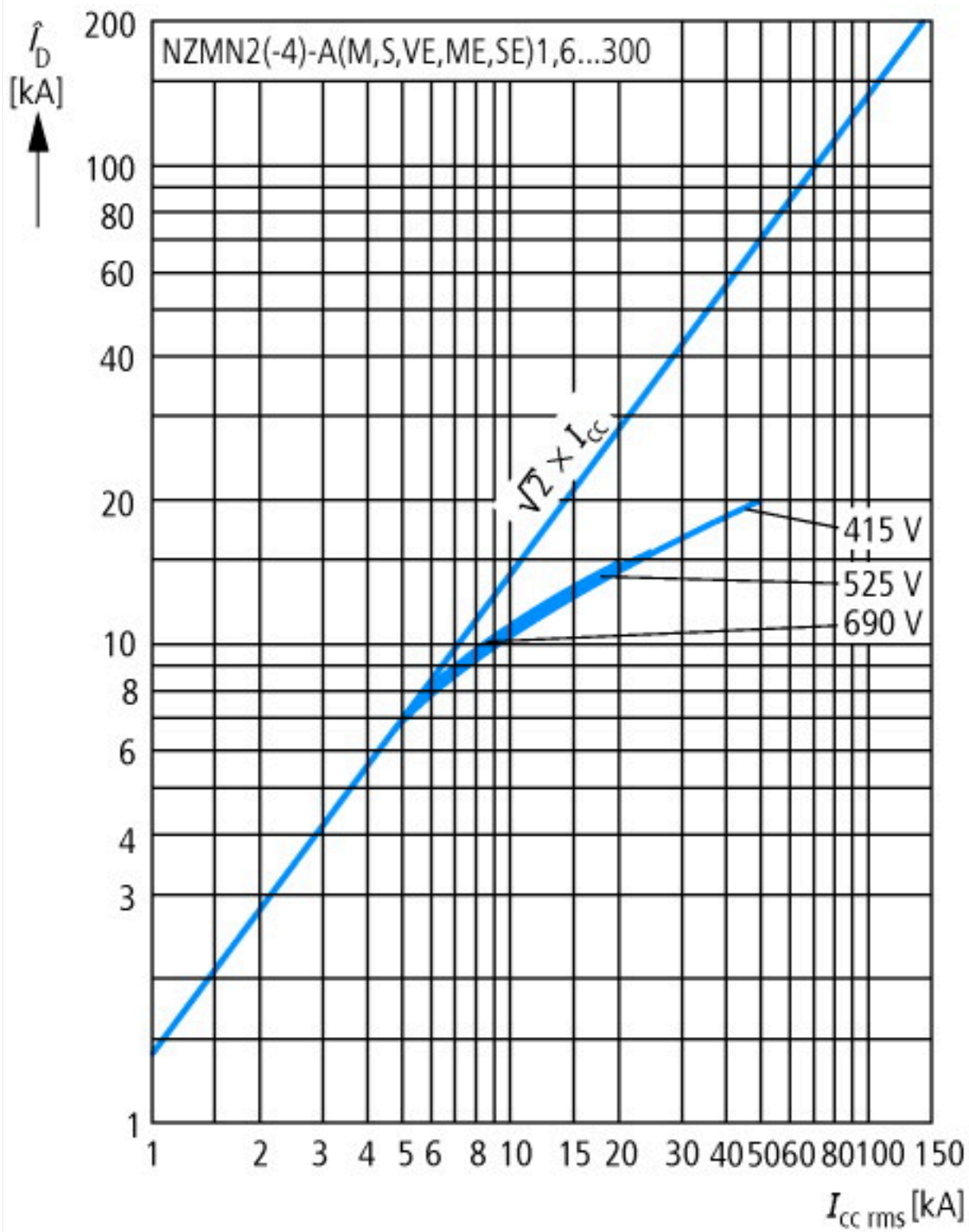
## Technical data ETIM 7.0

|   |  |    |  |
|---|--|----|--|
| Low-voltage industrial components (EG000017) / Power circuit-breaker for trafo/generator/installation protection (EC000228)   |  |    |  |
| Electric engineering, automation, process control engineering / Low-voltage switch technology / Circuit breaker (LV < 1 kV) / Circuit breaker for power transformer, generator and system protection (ecI@ss10.0.1-27-37-04-09 [AJZ716013]) |  |    |  |
| Rated permanent current I <sub>u</sub>  |  | A  | 100                                      |
| Rated voltage   |  | V  | 690 - 690                                |
| Rated short-circuit breaking capacity I <sub>cu</sub> at 400 V, 50 Hz   |  | kA | 50                                       |
| Overload release current setting  |  | A  | 50 - 100                                 |
| Adjustment range short-term delayed short-circuit release   |  | A  | 100 - 1000                               |
| Adjustment range undelayed short-circuit release  |  | A  | 1200 - 1200                              |
| Integrated earth fault protection   |  |    | No                                       |
| Type of electrical connection of main circuit   |  |    | Frame clamp                              |
| Device construction   |  |    | Built-in device fixed built-in technique |
| Suitable for DIN rail (top hat rail) mounting   |  |    | No                                       |
| DIN rail (top hat rail) mounting optional   |  |    | Yes                                      |
| Number of auxiliary contacts as normally closed contact   |  |    | 0  |
| Number of auxiliary contacts as normally open contact   |  |    | 0  |
| Number of auxiliary contacts as change-over contact   |  |    | 0  |
| With switched-off indicator   |  |    | No                                       |
| With under voltage release  |  |    | No                                       |
| Number of poles   |  |    | 4  |
| Position of connection for main current circuit   |  |    | Front side                               |
| Type of control element   |  |    | Rocker lever                             |

|                                      |      |
|--------------------------------------|------|
| Complete device with protection unit | Yes  |
| Motor drive integrated               | No   |
| Motor drive optional                 | Yes  |
| Degree of protection (IP)            | IP20 |

## Characteristics



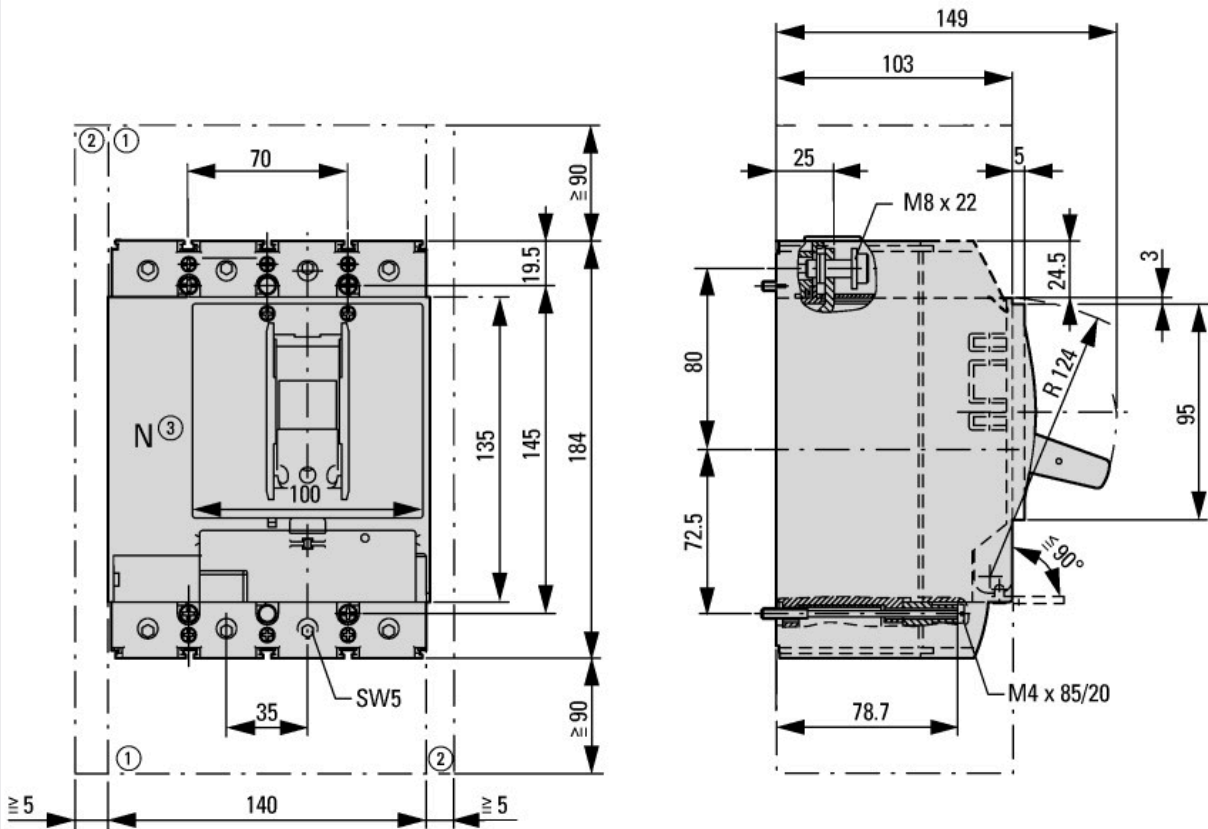


Let-through current



Let-through energy

# Dimensions



- ① Blow out area, minimum clearance to adjacent parts
- ② Minimum clearance to adjacent parts





### Additional product information (links)

|   |   |
|---|---|
| Temperature dependency, Derating                      | <a href="http://ecat.moeller.net/flip-cat/?edition=HPLEN&amp;startpage=17.172">http://ecat.moeller.net/flip-cat/?edition=HPLEN&amp;startpage=17.172</a>   |
| CurveSelect characteristics program                   | <a href="http://www.eaton.eu/DE/Europe/Electrical/CustomerSupport/ConfigurationTools/CharacteristicsProgram/index.htm">http://www.eaton.eu/DE/Europe/Electrical/CustomerSupport/ConfigurationTools/CharacteristicsProgram/index.htm</a>         |
| Eaton configurator                                    | <a href="http://www.eaton.eu/DE/Europe/Electrical/CustomerSupport/ConfigurationTools/ConfiguratorCircuitBreaker/index.htm">http://www.eaton.eu/DE/Europe/Electrical/CustomerSupport/ConfigurationTools/ConfiguratorCircuitBreaker/index.htm</a> |
| additional technical information for NZM power switch | <a href="https://es-assets.eaton.com/DOCUMENTATION/PDF/nzm_technic_de_en.pdf">https://es-assets.eaton.com/DOCUMENTATION/PDF/nzm_technic_de_en.pdf</a>   |