

Select your language

- German
- English
- Spanish
- French
- Dutch
- Italian
- Polish
- Czech
- Russian
- Norwegian Bokmål

Worldwide English



NZM2-XTVDVR - Door coupling rotary handle, red-yellow for emergency switching off, size 2



260180 NZM2-XTVDVR

[Overview](#) [Specifications](#) [Resources](#)



260180 NZM2-XTVDVR

Door coupling rotary handle, red-yellow for emergency switching off, size 2
EL-Nummer (Norway) 4358775

Optional accessories for circuit-breaker series NZM offers a comprehensive portfolio of application possibilities for worldwide use. Modular functional groups make mounting flexible and simple. Note: Complete including rotary drive and coupling parts. External warning plate/marketing plate can be clipped on. Red/yellow for EMERGENCY SHUTDOWN. Lockable on the handle on the switch using up to 3 padlocks. Lockable in 0 position on handle, lockable on the 0 position on the switch using up to 3 padlocks. With door interlock. Can be used for: NZM(-4), FN(-4), N(NO)2(-4)

- Delivery program
- Design verification as per IEC/EN 61439
- Technical data ETIM 7.0
- Approvals
- Dimensions

Delivery program

Product range
Accessories
Accessories
Door coupling rotary handle
Standard/Approval
UL/CSA, IEC
Construction size
NZM2
Description
Door coupling rotary handle for operating the switch through a closed control panel door
Function
Red-yellow for emergency switching off
Protection class
IP66
UL/CSA Type 4X, Type 12
Locking facility
lockable on the handle on the switch using up to 3 padlocks
With door interlock
Door interlock
Not defeated in the locked OFF position.
Can be modified in the unlocked ON position
Can be modified such that it can be defeated from the outside using a screw driver
Door can be opened in OFF
Project planning information
External warning plate/designation label can be clipped on.
Complete including rotary drive and coupling parts
Extension shaft additionally required.
For use with

NZM2(-4), FN2(-4), N(S)2(-4)

lockable

double

Notes

Circuit-breaker can also be installed in a lying position 90 ° left/right, with the handle still in the same position.

Design verification as per IEC/EN 61439

IEC/EN 61439 design verification

10.2 Strength of materials and parts 10.2.2 Corrosion resistance

Meets the product standard's requirements.

10.2 Strength of materials and parts 10.2.3.1 Verification of thermal stability of enclosures

Meets the product standard's requirements.

10.2 Strength of materials and parts 10.2.3.2 Verification of resistance of insulating materials to normal heat

Meets the product standard's requirements.

10.2 Strength of materials and parts 10.2.3.3 Verification of resistance of insulating materials to abnormal heat and fire due to internal electric effects

Meets the product standard's requirements.

10.2 Strength of materials and parts 10.2.4 Resistance to ultra-violet (UV) radiation

Meets the product standard's requirements.

10.2 Strength of materials and parts 10.2.5 Lifting

Does not apply, since the entire switchgear needs to be evaluated.

10.2 Strength of materials and parts 10.2.6 Mechanical impact

Does not apply, since the entire switchgear needs to be evaluated.

10.2 Strength of materials and parts 10.2.7 Inscriptions

Meets the product standard's requirements.

10.3 Degree of protection of ASSEMBLIES

Does not apply, since the entire switchgear needs to be evaluated.

10.4 Clearances and creepage distances

Meets the product standard's requirements.

10.5 Protection against electric shock

Does not apply, since the entire switchgear needs to be evaluated.

10.6 Incorporation of switching devices and components

Does not apply, since the entire switchgear needs to be evaluated.

10.7 Internal electrical circuits and connections

Is the panel builder's responsibility.

10.8 Connections for external conductors

Is the panel builder's responsibility.

10.9 Insulation properties 10.9.2 Power-frequency electric strength

Is the panel builder's responsibility.

10.9 Insulation properties 10.9.3 Impulse withstand voltage

Is the panel builder's responsibility.

10.9 Insulation properties 10.9.4 Testing of enclosures made of insulating material

Is the panel builder's responsibility.

10.10 Temperature rise

The panel builder is responsible for the temperature rise calculation. Eaton will provide heat dissipation data for the devices.

10.11 Short-circuit rating

Is the panel builder's responsibility. The specifications for the switchgear must be observed.

10.12 Electromagnetic compatibility

Is the panel builder's responsibility. The specifications for the switchgear must be observed.

10.13 Mechanical function

The device meets the requirements, provided the information in the instruction leaflet (IL) is observed.

Technical data ETIM 7.0

Low-voltage industrial components (EG000017) / Handle for power circuit breaker (EC000229)

Electric engineering, automation, process control engineering / Low-voltage switch technology / Circuit breaker (LV < 1 kV) / Handle for switch devices (ecl@ss10.0.1-27-37-04-14 [AKF012014])

Lockable

Yes

Colour

Red

Suitable for emergency stop

Yes

With extension shaft

No

Suitable for power circuit breaker

Yes

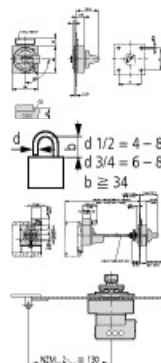
Suitable for switch disconnecter

Yes

Approvals

Product Standards
UL489; CSA-C22.2 No. 5-09; IEC60947, CE marking
UL File No.
E140305
UL Category Control No.
DIHS
CSA File No.
022086
CSA Class No.
1437-01
North America Certification
UL listed, CSA certified
Degree of Protection
IEC: IP66, UL/CSA Type 4X, 12

Dimensions



Minimum door coupling rotary handle clearance from door pivot point

CAD data

- [Product-specific CAD data](#)
(Web)
- [3D Preview](#)
(Web)

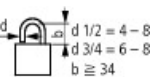
DWG files

- [DA-CD-nzm2_xtvd](#)
File
(Web)

Step files

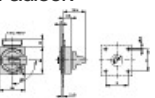
- [DA-CS-nzm2_xtvd](#)
File
(Web)

Dimensions single product

- 
d 1/2 = 4 - 8
d 3/4 = 6 - 8
b ≧ 34

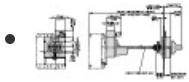
[123X196](#)

Line drawing
Padlock

- 

[123X480](#)

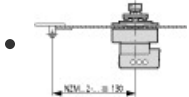
Line drawing
Door coupling rotary handle



123X488

Line drawing

Door coupling rotary handle with extension, mechanical interlock

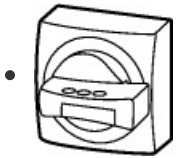


123X500

Line drawing

Minimum door coupling rotary handle clearance from door pivot point

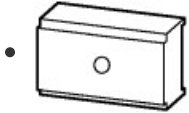
3D drawing



123I518

Line drawing

Door coupling rotary handle



123I699

Line drawing

Coupling part for door-coupling rotary handle

Product photo



1230PIC-682

Photo

Instruction Leaflet

- [NZM1,2 XTVDKL \(IL01203005Z\)](#)

Asset

IL01203005Z

(PDF, 03/21, Language independent)

Download-Center

- [Download-Center \(this item\)](#)
Eaton EMEA Download-Center - download data for this item
- [Download-Center](#)
Eaton EMEA Download-Center



[Generate data sheet in PDF format](#)



[Generate data sheet in Excel format](#)



[Write a comment](#)

[Imprint](#) [Privacy Policy](#) [Legal Disclaimer](#) [Terms and Conditions](#)

© 2022 by Eaton Industries GmbH