

Select your language

- German
- English
- Spanish
- French
- Dutch
- Italian
- Polish
- Czech
- Russian
- Norwegian Bokmål

Worldwide English



NZM1/2-XV6 - Extension shaft, for max. mounting depth = 600mm



260191 NZM1/2-XV6

[Overview](#) [Specifications](#) [Resources](#)



260191 NZM1/2-XV6

Extension shaft, for max. mounting depth = 600mm

EL-Nummer (Norway)

4358730

Optional accessories for the circuit-breaker series NZM offers a comprehensive portfolio of application options for use world wide. The mounting is always flexible and easy thanks to the modular function groups. Notes: 600 mm max. mounting depth. Can be used for: NZM1(-4), FN1(-4), N(NO)1(-4), NZM2(-4), FN2(-4), N(NO)2(-4)

- [Delivery program](#)
- [Design verification as per IEC/EN 61439](#)
- [Technical data ETIM 7.0](#)
- [Approvals](#)
- [Dimensions](#)

Delivery program

Product range

Accessories

Accessories

Extension shaft

Standard/Approval

UL/CSA, IEC

Construction size

NZM1/2

Description

Length 490 mm, can be cut to desired length

Equipment supplied

Extension shaft, 1 pc.

Function

600 mm max. built-in depth

For use with

NZM1(-4), FN1(-4), N(S)1(-4)

NZM2(-4), FN2(-4), N(S)2(-4)

Design verification as per IEC/EN 61439

IEC/EN 61439 design verification

10.2 Strength of materials and parts 10.2.2 Corrosion resistance

Meets the product standard's requirements.

10.2 Strength of materials and parts 10.2.3.1 Verification of thermal stability of enclosures

Meets the product standard's requirements.

10.2 Strength of materials and parts 10.2.3.2 Verification of resistance of insulating materials to normal heat

Meets the product standard's requirements.

10.2 Strength of materials and parts 10.2.3.3 Verification of resistance of insulating materials to abnormal heat and fire due to internal electric effects

Meets the product standard's requirements.
 10.2 Strength of materials and parts 10.2.4 Resistance to ultra-violet (UV) radiation
 Meets the product standard's requirements.
 10.2 Strength of materials and parts 10.2.5 Lifting
 Does not apply, since the entire switchgear needs to be evaluated.
 10.2 Strength of materials and parts 10.2.6 Mechanical impact
 Does not apply, since the entire switchgear needs to be evaluated.
 10.2 Strength of materials and parts 10.2.7 Inscriptions
 Meets the product standard's requirements.
 10.3 Degree of protection of ASSEMBLIES
 Does not apply, since the entire switchgear needs to be evaluated.
 10.4 Clearances and creepage distances
 Meets the product standard's requirements.
 10.5 Protection against electric shock
 Does not apply, since the entire switchgear needs to be evaluated.
 10.6 Incorporation of switching devices and components
 Does not apply, since the entire switchgear needs to be evaluated.
 10.7 Internal electrical circuits and connections
 Is the panel builder's responsibility.
 10.8 Connections for external conductors
 Is the panel builder's responsibility.
 10.9 Insulation properties 10.9.2 Power-frequency electric strength
 Is the panel builder's responsibility.
 10.9 Insulation properties 10.9.3 Impulse withstand voltage
 Is the panel builder's responsibility.
 10.9 Insulation properties 10.9.4 Testing of enclosures made of insulating material
 Is the panel builder's responsibility.
 10.10 Temperature rise
 The panel builder is responsible for the temperature rise calculation. Eaton will provide heat dissipation data for the devices.
 10.11 Short-circuit rating
 Is the panel builder's responsibility. The specifications for the switchgear must be observed.
 10.12 Electromagnetic compatibility
 Is the panel builder's responsibility. The specifications for the switchgear must be observed.
 10.13 Mechanical function
 The device meets the requirements, provided the information in the instruction leaflet (IL) is observed.

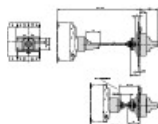
Technical data ETIM 7.0

Low-voltage industrial components (EG000017) / Switch operating shaft (EC000916)
 Electric engineering, automation, process control engineering / Low-voltage switch technology / Circuit breaker (LV < 1 kV) / Switch axle (ecl@ss10.0.1-27-37-04-13 [AKF011013])
 Length
 490 mm
 Cross section height
 8 mm
 Cross section width
 8 mm

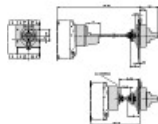
Approvals

North America Certification
 UL/CSA certification not required

Dimensions



in connection with NZM1-XT(V)D(V)(R) door coupling rotary handle



in connection with NZM2-XT(V)D(V)(R) door coupling rotary handle

- [Product-specific CAD data](#)
(Web)
- [3D Preview](#)
(Web)

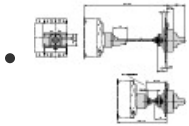
DWG files

- [DA-CD-nzm12_xv6](#)
File
(Web)

Step files

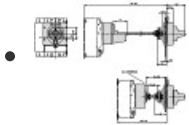
- [DA-CS-nzm12_xv6](#)
File
(Web)

Dimensions single product



[123X514](#)

Line drawing
Extension shaft



[123X516](#)

Line drawing
Extension shaft

3D drawing



[123I505](#)

Line drawing
Extension shaft

Product photo




[1230PIC-153](#)


Photo
Extension shaft

Download-Center

- [Download-Center \(this item\)](#)
Eaton EMEA Download-Center - download data for this item
- [Download-Center](#)
Eaton EMEA Download-Center

 [Generate data sheet in PDF format](#)

 [Generate data sheet in Excel format](#)

 [Write a comment](#)

[Imprint](#) [Privacy Policy](#) [Legal Disclaimer](#) [Terms and Conditions](#)

