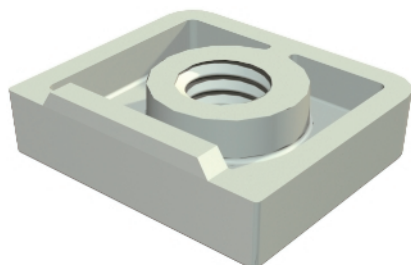


starQuick nut



The starQuick nut was developed especially for the starQuick clip. Simply push into the intended opening of the clip. The nut is captive in the clip. Suitable for M6 threads.

Type	Thread	Dimension L mm	Dimension D1 mm	Dimension h mm	Dimension t mm	Colour	Pack. pcs	Weight kg/100 pcs.	Item No.
SQ M6	M6	15	—	5	4	Light grey	100	0,070	2146509

PC Polycarbonate

Dimensions

