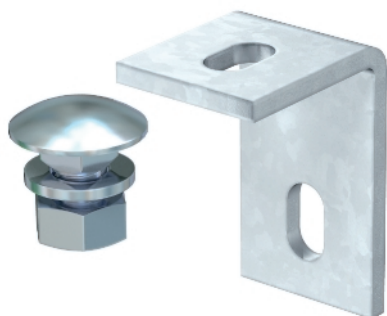


Mounting angle BW 70

Including truss-head bolt M10 x 25.
Mounting angle of limb dimension 70 x 50 mm.



Type

Type	Pack. pcs	Weight kg/100 pcs.	Item No.
BW 70 40 FT	10	22,000	6019706
BW 70 40 VA4301	10	18,000	6019710

St Steel **V2A** Stainless steel, grade 304

FT Hot-dip galvanised

Dimensions

