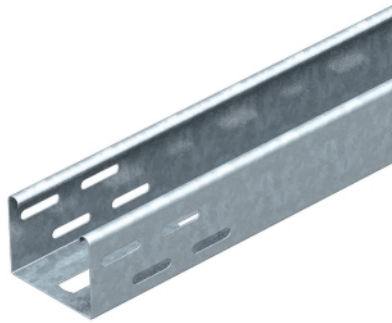


### Luminaire support tray

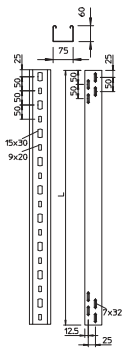


Luminaire support tray with perforated base for fastening luminaires and cable penetration.  
The white version is a visible surface coating.

Type	Width mm	Plate thickness mm	Colour	Pack. m	Weight kg/100 m	Item No.
LTR 3000 FS	75	0,75	–	3	125,700	6055810
LTR 6000 FS	75	0,75	–	6	125,700	6055812
LTR 3000 FT	75	0,75	–	3	142,370	6055817

- St** Steel
- FS** Strip-galvanised
- FT** Hot-dip galvanised

#### Dimensions

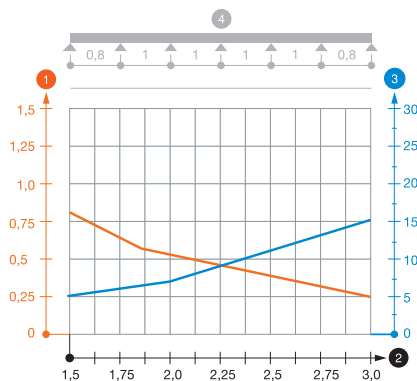


Type	Length mm	Width mm	Useful cross- section cm <sup>2</sup>
LTR 3000 FS	3000	75	42
LTR 6000 FS	6000	75	42
LTR 3000 FT	3000	75	42

#### Load

Type	1.5 m kN/m	2.0 m kN/m	2.5 m kN/m	3.0 m kN/m
LTR 3000 FS	0,8	0,55	0,35	0,25
LTR 6000 FS	0,8	0,55	0,35	0,25
LTR 3000 FT	0,8	0,55	0,35	0,25

#### Load diagram, luminaire support tray, type LTR



- 1 Permitted cable tray/ladder load in kN/m without man load
- 2 Support width in m
- 3 Rail bend in mm at permitted kN/m
- 4 Load scheme during testing
- Load curve with cable tray/ladder width in mm
- Strut bend curve according to support width