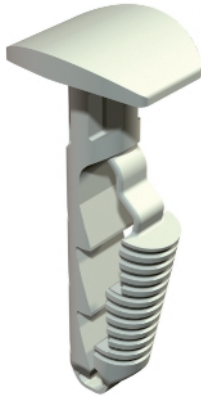


Push-fit anchor with mushroom head



The push-fit anchor allows simple mounting, e.g. of labelling panels or small WDK ducts. Suitable for concrete, lime sandstone and brickwork as solid brick. Use in gas concrete masonry is possible, but reduced load capacities must be expected.

Type	Dowel Ø mm	Length mm	Bore hole depth mm	Pack. pcs	Weight kg/100 pcs.	Item No.
910 STP 6x30	6	30	35	100	0,101	2351412

PA Polyamide

Dimensions

