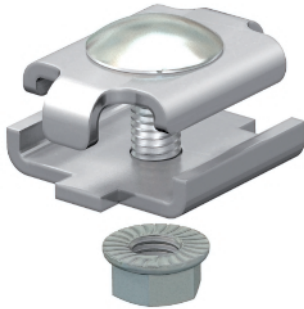


Joint connector



Screwed version of joint connector for mesh cable trays.
Including FRS M6 x 20 bolt with flange nut.
Figure: Positioning and quantity of mesh cable tray connectors.
50-150 mm = 2 units
400 mm = 3 units
450-600 mm = 5 units

Type	Pack. pcs	Weight kg/100 pcs.	Item No.
GSV 34 FT	20	3,000	6016634
GSV 34 VA4301	20	3,000	6016642
GSV 34 VA4401	20	3,000	6016648

St Steel **V2A** Stainless steel, grade 304 **V4A** Stainless steel, grade 316

FT Hot-dip galvanised

Dimensions

