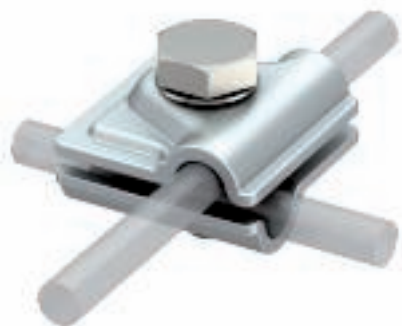


## Vario quick connector



- For T, cross and parallel connectors
- Quick installation using hexagonal bolt M10 x 30, high-grade stainless steel
- Conforms to the requirements according to DIN VDE 0185-305 (IEC 62305)

Type	Fit mm	Dim. A mm	Pack. Weight		Item No.
			pcs	kg/100 pcs.	
249 8-10 ALU	Rd 8-10	44	30	6,600	5311519
249 B ALU	Rd 8-10	44	100	7,250	5311713

**Alu** Aluminium

### Dimensions

