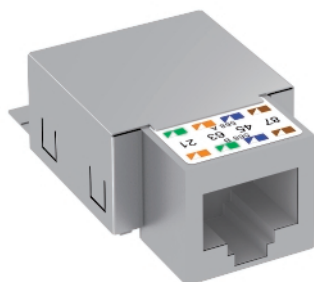


RJ45 data connection module, Cat. 5e, shielded

Connection module Cat. 5e shielded, with a RJ 45 slot. Includes an EMC screen hood, a dust cover, a cable tie and mounting instructions. Suitable for installation in data technology supports of type DTG-2RM and DTS-2RM.



Type	Pack.	Weight	Item No.
	pcs	kg/100 pcs.	
ASM-C5 G	1	2,660	6117325

Dimensions

