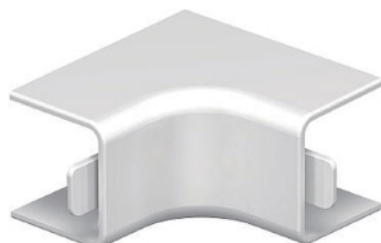


Internal corner cover



Internal corner cover for changing the direction of the WDK trunking.

| Type | Colour | Dim. a mm | Pack. pcs | Weight kg/100 pcs. | Item No. |
|----------------|------------|-----------------|--------------|-----------------------|----------|
| WDK HI20020RW | Pure white | 38,5 | 4 | 0,619 | 6191878 |
| WDK HI20020CW | Cream | 38,5 | 4 | 0,560 | 6160018 |
| WDK HI20020LGR | Light grey | 38,5 | 4 | 0,560 | 6182011 |
| WDK HI20020GR | Stone grey | 38,5 | 4 | 0,560 | 6158226 |

PVC Polyvinylchloride

Dimensions

