

# Installation and operating instructions

## Mobile wireless doorbell CALIMA 800

- Bluetooth® loudspeaker function
- Individual ringing melodies in MP3 format
- LED light ring / LED flashing light
- Operation with rechargeable battery or power supply unit



**GROTHE**  
URMET|GROUP

## Table of contents

<b>General information</b>	
• Product information .....	3
• Safety and legal information .....	4
<b>CALIMA 800 – the highlights briefly explained</b> .....	5
<b>Product overview</b> .....	6
<b>First use / commissioning / Connect rechargeable battery</b> .....	7
Replacement of the rechargeable battery .....	9
Table adapter .....	10
<b>Setting of the wireless doorbell</b>	
• Switch Bluetooth® function on and off / Couple audio source via Bluetooth® .....	11
• Melody selection / microSD card .....	13
• Colour selection LED light ring .....	16
• LED setting .....	17
• Ringtone volume .....	19
<b>Mute / slumber function</b> .....	20
<b>Coupling</b>	
• Couple wireless doorbell and wireless bell button .....	22
• Delete coupling between wireless doorbell and wireless bell button .....	24
<b>Alarm function</b> (optional with MISTRAL SE03) .....	25
<b>Possible combinations / networking</b> .....	26
<b>Radio range</b> .....	27
<b>Technical data</b> .....	27
<b>Troubleshooting and help</b> .....	28
<b>Quick start guide</b>	
• Bluetooth® .....	30
• Melody selection / microSD card .....	31
• Colour selection LED light ring .....	32
• LED setting .....	32
• Volume .....	33
• Slumber function .....	33
• Mute .....	34
• Coupling .....	34
• Delete coupling .....	35
• Alarm function .....	35

Dear client,

Thank you very much for choosing our product. With this device you have acquired a quality product which we have developed and produced for you with the greatest possible care and to the highest standards.

### Package contents

Please check the package contents against the enclosed packing list.

### You also need

- a coin or similar to open the battery compartment
- Optional microSD card for using the external melody memory, available as accessory, 16 GB µSD16 (article number 43509)

### Informationen about the product

Please read the installation and operating instructions carefully before commissioning and keep them for future reference on. Attach these instructions to the product in case you pass it on.

The latest **installation and operating instructions** are also available on our website on the respective article detail page as **PDF for download**. You can also find out more here:



<https://www.grothe.de/Haeufig-gestellte-Fragen/>



<https://www.grothe.de/service/erklaervideos/>

### Cleaning

Please clean using only a slightly damp cloth, not a microfibre cloth, as this could scratch the surface.

### Intended use

The device described here is solely intended as a radio-controlled bell and signalling system for private use. The function can be impaired by different influences (flat batteries, radio interference, etc.). Never use this wireless doorbell in safety-related areas!

If failure of the device could cause a hazard for people, or other consequential damage is possible, you MUST prevent this through suitable additional safety measures!

### Safety instructions

Do not expose the wireless doorbell to dripping or splashing liquid! Do not place any vessels filled with liquid on it! Do not cover it with objects or blankets, curtains, etc. and protect it from direct sunlight and naked flames!

A short circuit of the charging contacts on the desk adapter must be prevented at all costs.

## Safety and legal information

### Declaration of conformity

Grothe GmbH herewith declares in sole responsibility and legally binding that this product is in conformity with the essential health and safety requirements and the other relevant provisions of Directive 2014/53/EU; depending on the device type tested according to the relevant standards EN3000220-2, EN 301489-1, EN 62368-1:2016, EN 55022, EN 50581.

RED Directive 2014/53/EU

EMC Directive 2014/30/EU

RoHS Directive 2011/65/EU

WEEE Directive 2012/19/EU

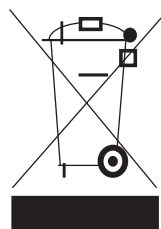
EC Declaration of Conformity for all EC countries: visit [www.funkgong.de](http://www.funkgong.de)

Transmission frequency 868.35 MHz

### Disposal and recycling

Electrical equipment with this labelling must be collected separately and recycled in an environmentally compatible way.

Electric scrap and batteries (if used) may NOT be disposed of in household or commercial waste! Dispose of unusable or discontinued electrical equipment solely via the return and collection systems or via the manufacturer or importer.



### Guarantee and liability

GROTHER GmbH doorbells are produced using modern technology and are subjected to one hundred percent quality control. If a defect nonetheless occurs in your device, GROTHE GmbH provides a guarantee with the following scope.

1. Our guarantee includes subsequent improvement or replacement delivery of a device, if it verifiably has functional or material defects.
2. The guarantee does not cover natural wear and tear or transport damage. It also does not cover damaged caused by disregard of the installation instructions or improper installation. The guarantee automatically expires if the device was opened after the fault diagnosis.
3. The guarantee period is 24 months from purchase of the device by the consumer. Compliance with the claim period must be verified by proof of date of purchase by means of the enclosed invoice, delivery note or similar document.

In case of a defect, please send the device with enclosed description of the defect to the address of the seller with the above-named documents.

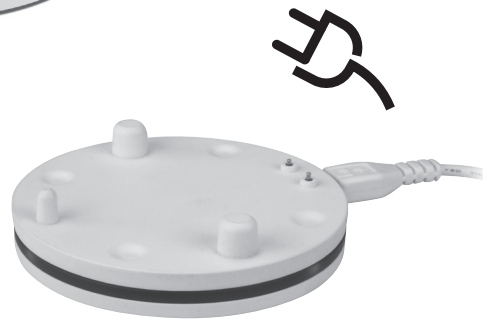
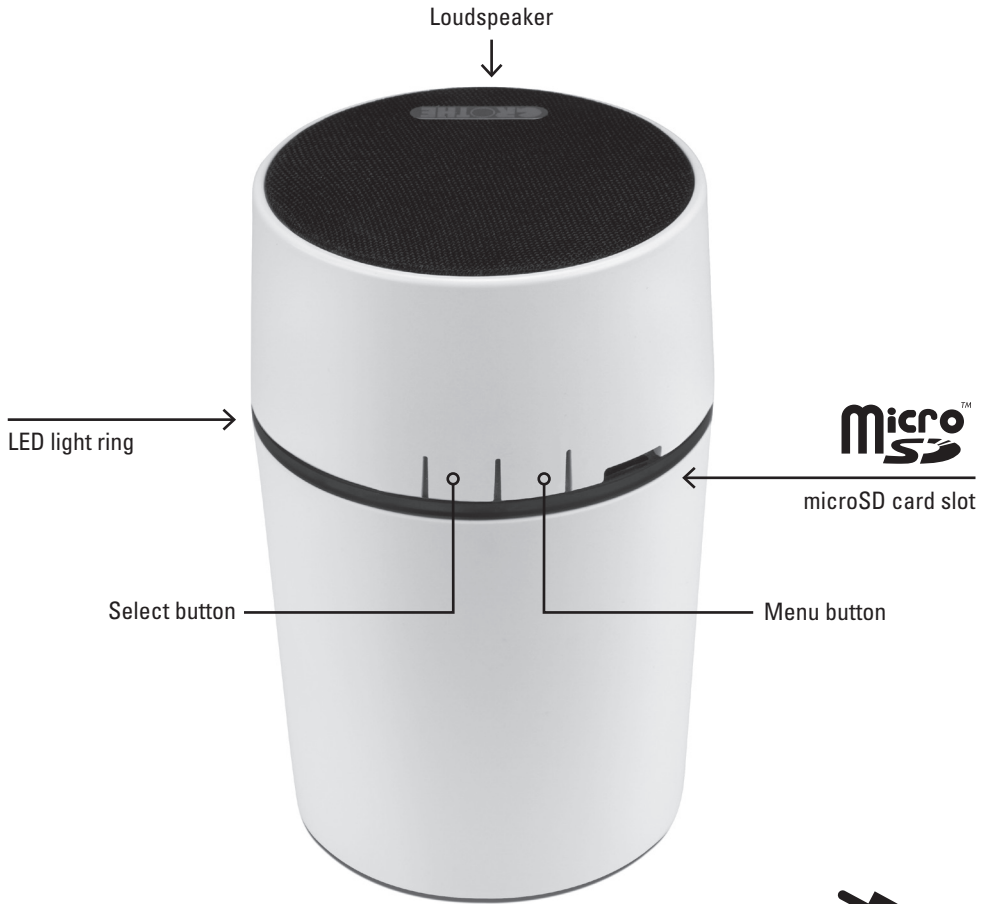
## CALIMA 800 – the highlights briefly explained

### The flexible teamplayer – CALIMA 800 ...

- ... is a **mobile wireless doorbell** with a **large range** and **stable radio connection**, which you can use anywhere in the house and in protected outdoor areas (outdoors in dry weather from moisture protected).
- ... is set and operated quickly and easily via the **two-button control**.
- ... reports **the status of the setting** via the **voice output**.
- ... is a **powerful Bluetooth® loudspeaker** that automatically pauses when a call is signalled or when an incoming call is received. The stream is controlled via a smartphone or similar.
- ... is equipped with a **microSD card slot**. Save your desired call melodies in **MP3** format on a microSD card (optional accessory µSD16, article number 43509)
- ... is **equipped with a powerful rechargeable lithium-ion battery**, which is charged via the table adapter.
- ... can be used in battery mode or can permanently be supplied with voltage with the matching table adapter with mains adapter (Additional table adapters TA55 available, article number 43599).
- ... **each coupled wireless bell-button** (wireless motion detector) can be assigned an **individual call melody** from the internal or external melody memory (microSD card).
- ... can be **muted indefinitely or set to sleep mode** for **1 / 3 / 9 hours** and then does not signal visually or acoustically. Until then the LED light ring flashes green as a reminder.
- ... **saves all settings permanently** - even without power supply.
- ... has a **coloured LED light ring with LED flash light function** for **optical signalling**. Colour and type can be adapted to your specific needs.
- ... is **individually adjustable**. You can add to every MISTRAL wireless bell-button, wireless motion detector etc. to every (general transmitters) a **different ringing melody, a special optical signalling** (white flashing / coloured light or flashing / switched off). One **exception**: the volume is always the same for everyone.
- ... is **quickly ready for use**, as it is initially only **coupled with the wireless bell-button** (general transmitter) \*. Later, the call melody, volume and optical call signalling are set.
- ... is coupled with the wireless bell-button MISTRAL SE03 in the set ex works.
- ... is part of an **expandable system**, which can be equipped with different wireless bell-buttons, wireless doorbells, wireless motion detectors etc. (general transmitters) of the series CALIMA, MISTRAL or ECHO.
- ... can be coupled with **up to 22 wireless bell-buttons, wireless motion detectors**, etc. (general transmitters). Each one transmits an individual code, so interference is impossible.
- ... can also be used as a quickly deployable, flexible and above all **mobile in-house help call system**. For the alarm function you need a wireless bell-button MISTRAL SE03 as alarm transmitter.

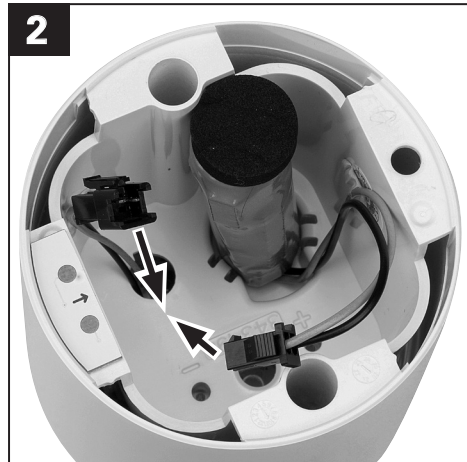
\* The chapters "coupling" and quick start guide describe the coupling process.

## Product overview





Open the battery compartment by using a coin to unscrew the cover anti-clockwise.



Before first-time use, the battery needs to be connected to the CALIMA 800.

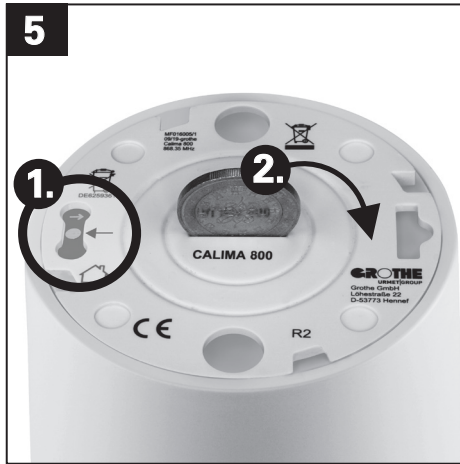


To do this, simply push the **plug of the battery** into the socket of the wireless doorbell until it **audibly clicks into place**. Please note the polarity (same colours to each other).



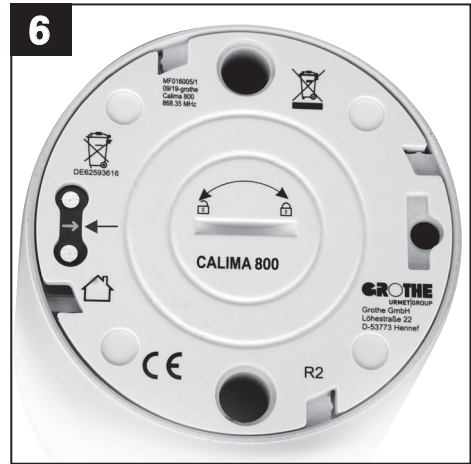
The LED light ring **lights up red** during the configuration process

**Good to know:** The anti-twist protection ensures that you can only push the plug into the socket in the correct position.



**1.** Put the cover on. The **small black arrow on the cover** must point to the contact, which, viewed clockwise, is visible below respectively to the left of the small white arrow between the contacts.

**2.** Close the battery compartment by **sliding a coin to screw the cover clockwise**.



Cover in closed state.  
The closed cover prevents the battery from slipping.



## Replacement of the rechargeable battery

### Good to know:

The CALIMA 800 is equipped with a **long-life rechargeable lithium-ion battery**.

**The rechargeable battery is not permanently installed and can be easily replaced without tools.** We thus support a long product life of a high-quality product.

Depending on usage habits, it may at some point be necessary to replace the battery.

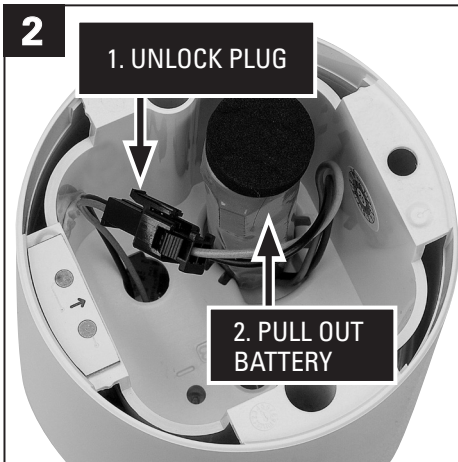
If, after very frequent charging and discharging processes, you notice that the battery performance has decreased considerably or the battery is defective, **you can obtain a suitable replacement rechargeable battery from us.**

1



Open the battery compartment by using a coin to unscrew the cover counterclockwise to replace the rechargeable battery.

2



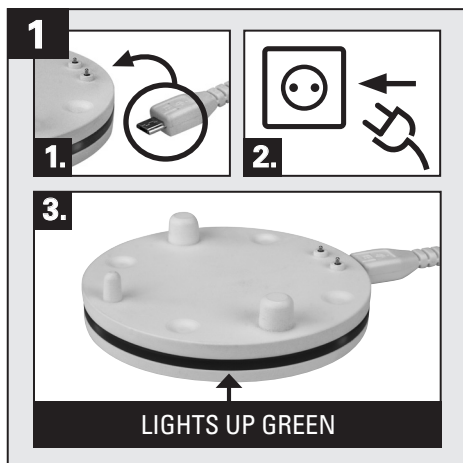
1. Press the small lever on the plug to unlock it. This will release the connection.
2. Pull the battery upwards out of the housing.

3



Connect the new rechargeable battery as you did for the initial use. Then **insert the rechargeable battery, wires first**, into the slot in the bottom of the housing. Then close the housing as explained.

## Table adapter



- 1.) Connect the **USB cable** to the **table adapter**.
- 2.) Plug the **power adapter** into a **socket**.
- 3.) As soon as the **LED light ring lights up green**, the table adapter is ready for use.



Place the CALIMA 800 on the table adapter so that the **spring contacts** touch the **contact points of the CALIMA 800**. The guide domes of the table adapter help to find the correct position.



The LED light ring indicates the following conditions: **Green** – Standby, CALIMA 800 is supplied with voltage, the battery is fully charged. **Red** – battery is charged. **Does not light up** – mains adapter is not plugged in, please check the connections.

### Note:

Charge the battery for at least **12 hours** prior to initial use.

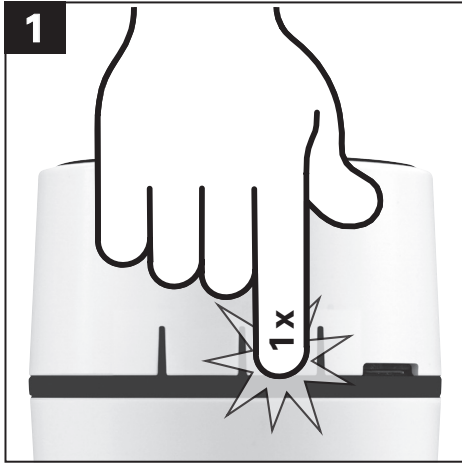
**Settings** such as coupling, melody selection, etc. can also be **made before the 12 hours** have elapsed, even while charging on the table adapter (TA55).

If possible, **please supply the CALIMA 800 as standard via the TA55 table adapter** to ensure that the battery is always sufficiently charged.

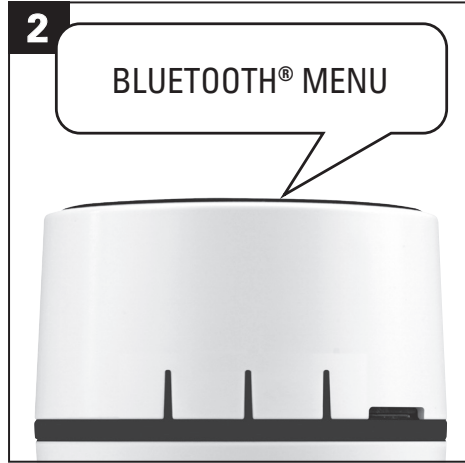
Of course, CALIMA 800 can also be used as a **mobile wireless doorbell** and **Bluetooth® loudspeaker** over a long period of time without the need for a table adapter. Audio output via Bluetooth® streaming is guaranteed **for several hours**.

## Bluetooth® function

**CALIMA 800 can be connected to other audio sources via Bluetooth® and thus be used as a Bluetooth® loudspeaker.** When a visitor rings, the sound output of the **Bluetooth® source** is immediately **muted** and automatically resumes when the ringing melody ends. So you will certainly not miss a visitor.



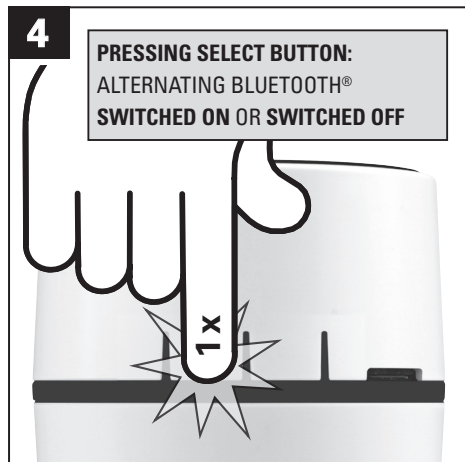
Press the **Menu button** on the wireless doorbell in its normal state once.



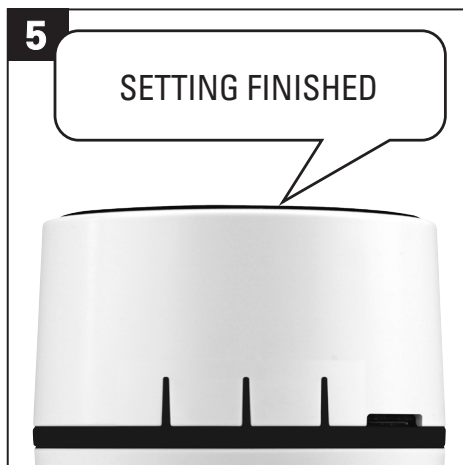
You will hear „Bluetooth® menu“.



The LED light ring **lights up blue**.



Pressing the **select button** turns on the **Bluetooth® function**. The **next time you press the select button, Bluetooth® is switched off**.



As confirmation you will hear „setting finished“.

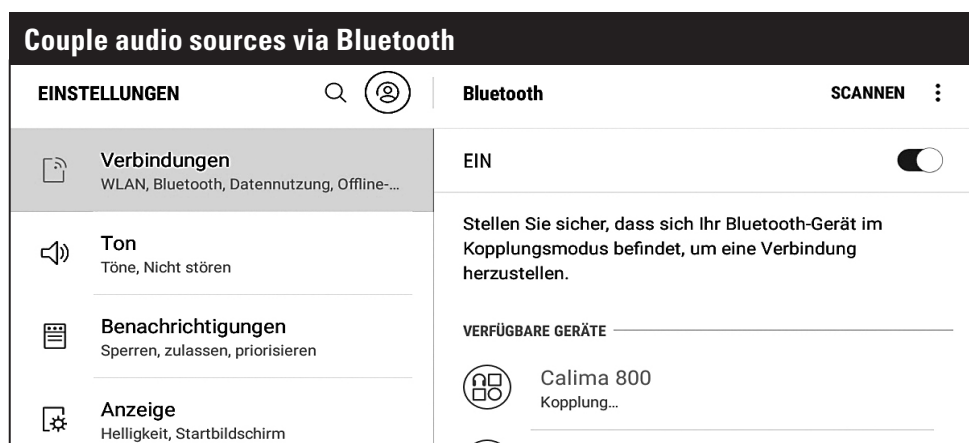
**Good to know:** We recommend to switch off Bluetooth® function, if you do not want to use the loudspeaker.

This extends the battery life (if you use the CALIMA 800 without table adapter).

**If the Bluetooth® function is switched off, operation is guaranteed for several months.**

A harmful deep discharge of the battery is prevented by the CALIMA 800 **battery monitoring system**.

**Note:** The wireless doorbell automatically returns to the normal state, if no button has been pressed for 7 seconds

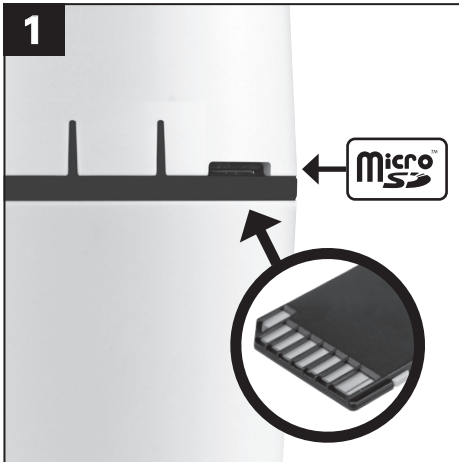


In the **Bluetooth® menu on your smartphone or other Bluetooth® enabled audio source**, you will see „CALIMA 800“, when the Bluetooth® function of the CALIMA 800 is switched on. Connect your Bluetooth® audio source with the CALIMA 800.

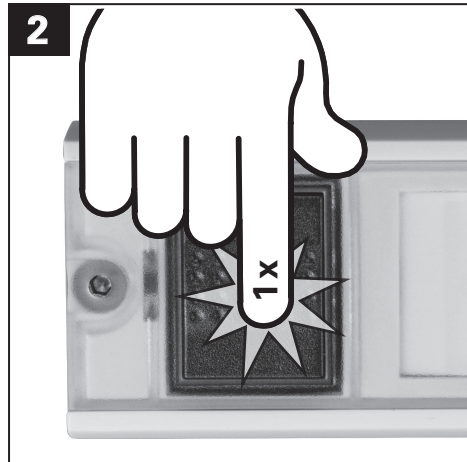
**Start a program with audio output on a coupled device within range of Calima 800.** Adjust the volume of the audio output on the coupled device.

**Note:** When the battery is low, the Bluetooth® function is automatically switched off. **If the battery charge drops further**, all functions of the CALIMA 800 are then deactivated. You must fully recharge CALIMA 800 using the TA55 desk adapter to be able to use its functions again.

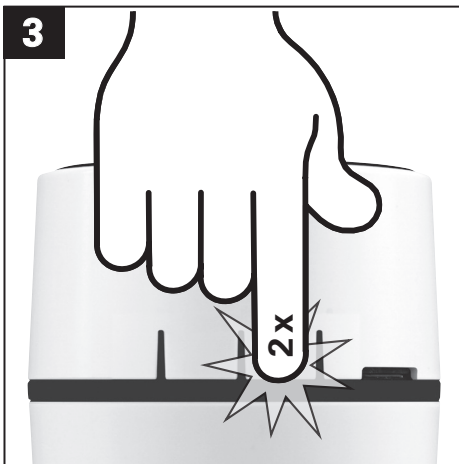
## Melody selection – melody memory / microSD card



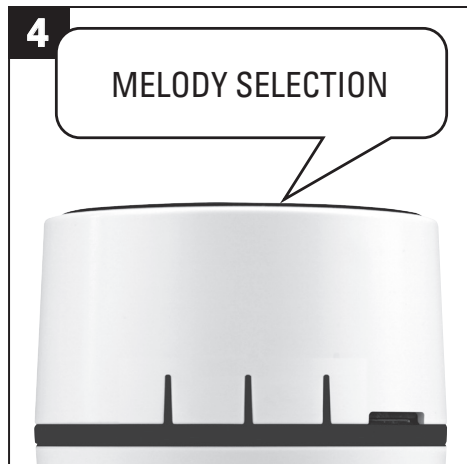
Insert the **microSD card\*** into the microSD card slot with the **contacts upwards** after you have copied the melodies in MP3 format into the main directory of the microSD card\*.



Press the **wireless bell button** for which you want to set the melody.



Then, press the **Menu button** on the wireless doorbell in its normal state **twice**.

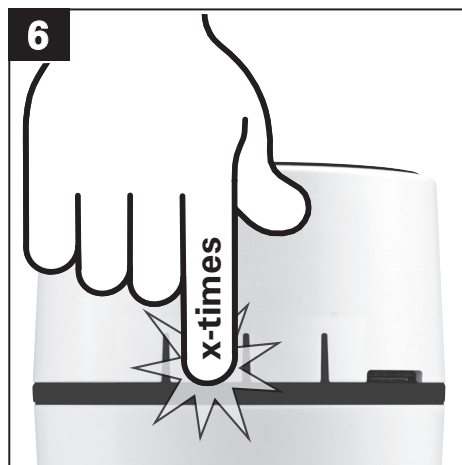


You will hear **"melody selection"**.

\*microSD-card 16 GB available at Grothe (µSD16 article number 43509)



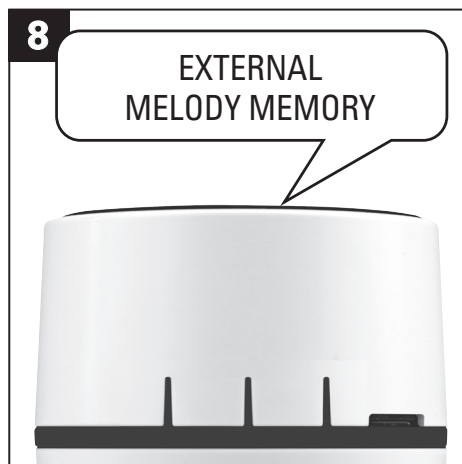
The LED light ring **lights up green** when the **internal melody memory** is activated.



For selecting a call melody in the **internal melody memory** press the **Select button** repeatedly until the desired melody is played.



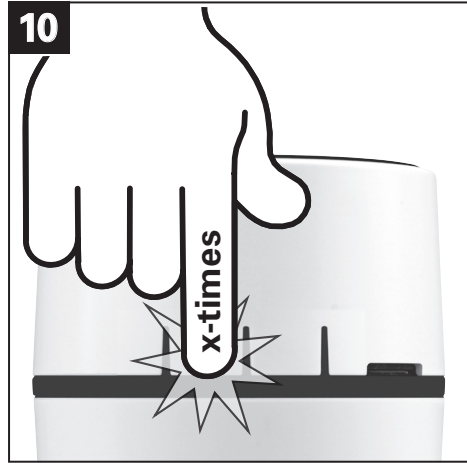
To select a call melody in the **external melody memory (microSD card)**, press the **Select button** for approximately **three seconds** in order to switch to external memory.



You will hear **"External melody memory"**.

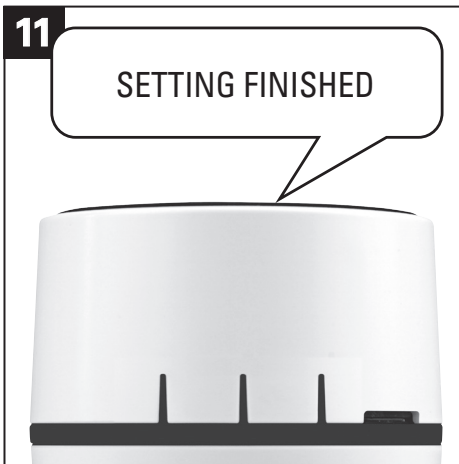


The LED light ring **lights up yellow** when the **external melody memory** is activated.



For a selection in **external melody memory** press the **Select button** repeatedly until the the desired melody is played.

From now on, you hear the last played melody when the wireless bell button is pressed.



You will hear **"Setting finished"** as confirmation.

**Note:** The wireless doorbell automatically returns to the normal state, if no button has been pressed for 7 seconds.

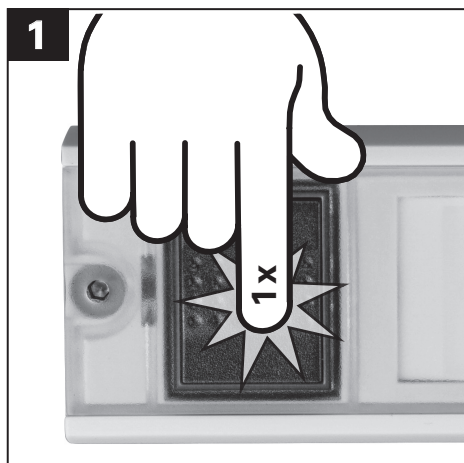
**Repeat the procedures to set the melody for further coupled wireless bell-buttons.**

**Note:** You can switch between the external and internal melody memory at any time by pressing the Select button again for about three seconds.

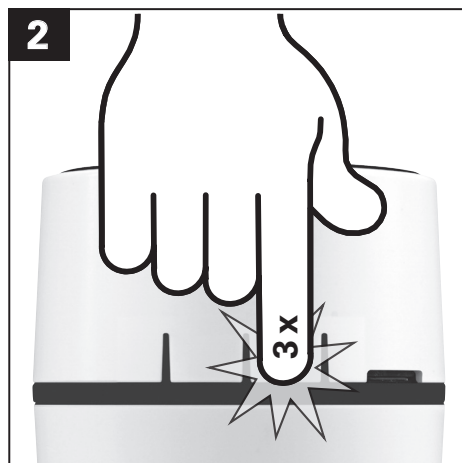
The LED light ring lights up according to the selection

- **green** for active **internal memory**
- **yellow** for active **microSD card**.

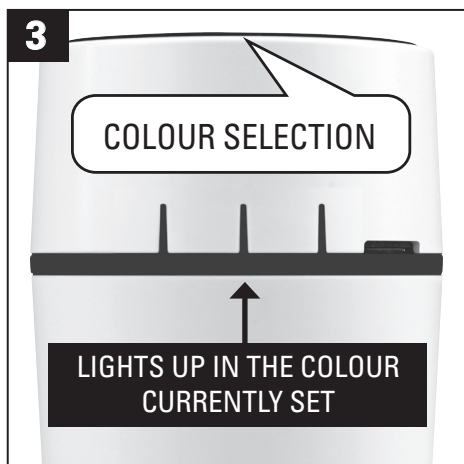
## Colour selection LED light ring



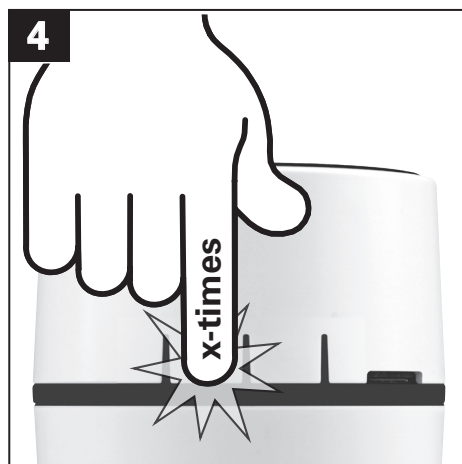
Press the **wireless bell button**, for which you want to set the colour of the LED light ring.



Then, press the **Menu button** on the wireless doorbell in its normal state three times.

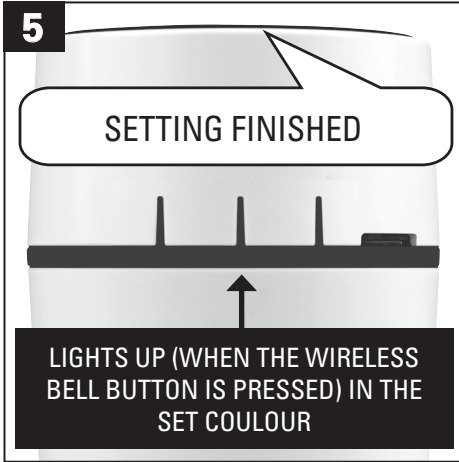


You will hear "**Colour selection**". The LED light ring lights up in the colour **currently set**.



Now press the **Select button** repeatedly until the LED light ring lights up in the desired colour. Your selection is **saved automatically** if no button is pressed for **7 seconds**.



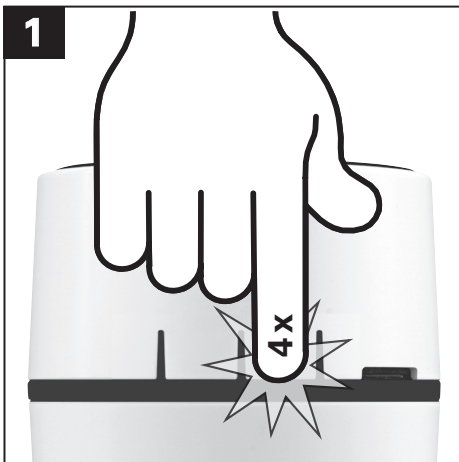


7 seconds after the last button was pressed you will hear **"Setting finished"**.

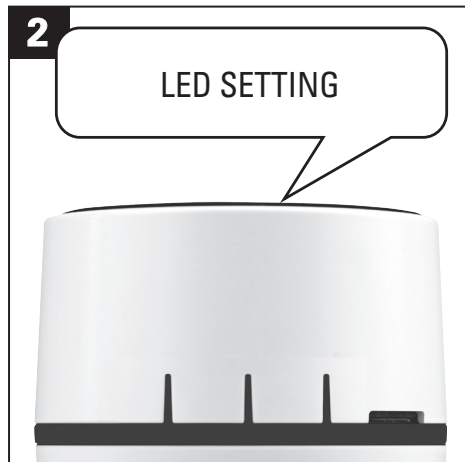
From now on, the LED ring lights up in the set colour when the wireless bell button is pressed.

**Note:** The wireless doorbell automatically returns to the normal state if no button has been pressed for 7 seconds.

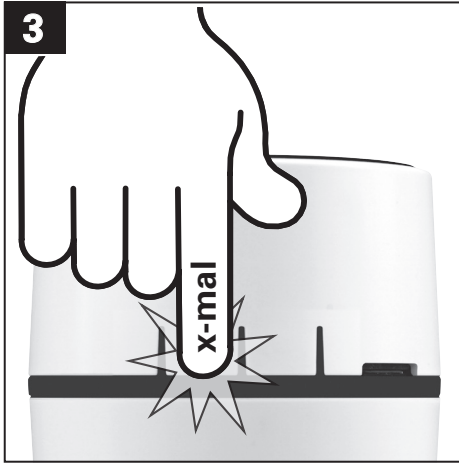
## LED Setting



Press the **Menu button** in the normal state **four times**.



You will hear **"LED setting"**.

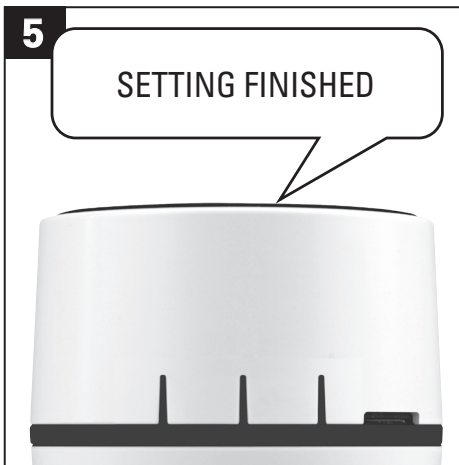


Now press the **Select button** repeatedly until the desired LED setting is displayed.



Selection options always start from the current setting in the following order:

- **White flashing**
- **Coloured lighting**
- **Coloured blinking**
- **Switched off**



As confirmation you will hear **“Setting finished”**.

**Note:** The wireless doorbell automatically returns to the normal state if no button has been pressed for 7 seconds.

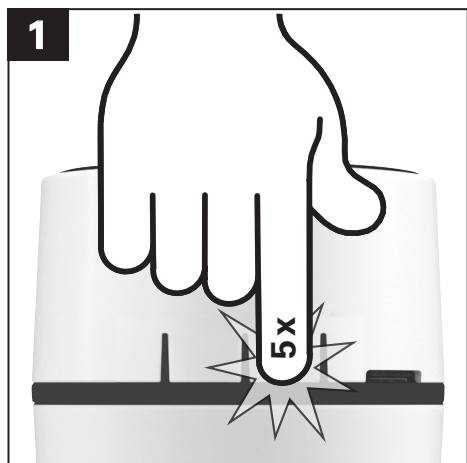
**Good to know:**

You have various options for the LED light ring / LED flash light to choose from, which you can define individually for each wireless bell button (in general transmitter).

- **Colour** (red, green, blue etc.)
- **Type** (RGB-LED lights up or blinks, white light flashes)
- **Optical signalling switched off**

If you use several wireless bell buttons, you can distinguish which door was rung.

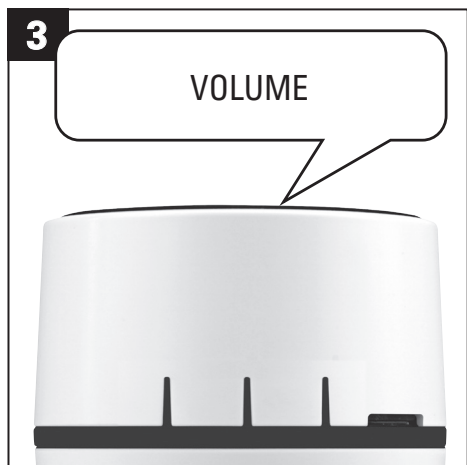
## Ringtone volume



Press the **Menu button** in the normal state **five times**.

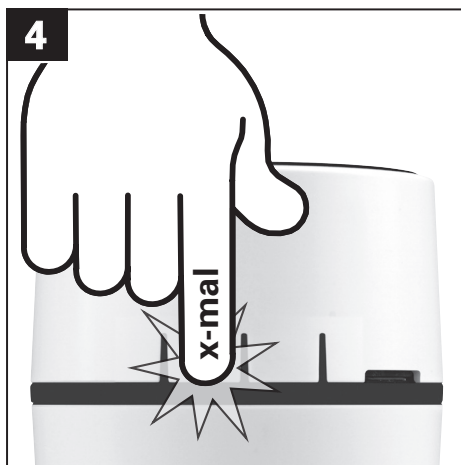


The LED light ring **blinks green** as confirmation.



You will hear "**Volume**".

**Note:** The volume of the wireless doorbell can always only be set for **all** wireless bell buttons used.



Press the **Select button** until the call melody is played with the desired volume.

Your selection is saved **automatically**, if no button is pressed for **7 seconds**.



7 seconds after the last button was pressed you will hear “**Setting finished**”. From now on, the wireless doorbell signals with the last selected volume.

**Note:** The wireless doorbell automatically returns to the normal state if no button has been pressed for 7 seconds.

## Mute / slumber function

If you do not want to be disturbed, you can mute the wireless doorbell so that neither a melody is played, nor does the LED ring flash. **The wireless doorbell signals neither visually nor acoustically.** To do this, two options are available for you to choose from:

- The function can either be activated for a **previously defined period (slumber function)**

- or for an **unlimited time (mute).**

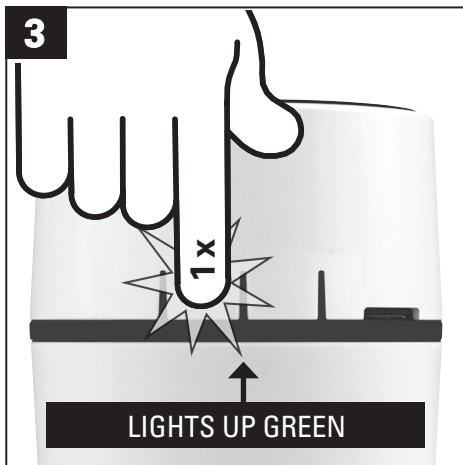
**Both functions**, i.e. mute and slumber mode, are **indicated visually**. The LED ring **blinks green** until the wireless doorbell is back in active mode, and therefore serves as a reminder to end muting.



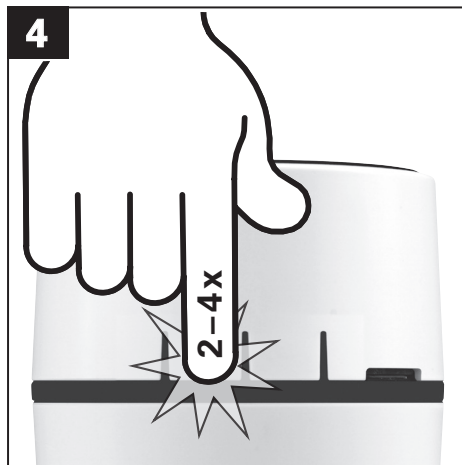
Press the **Select button** in the normal state **once**.



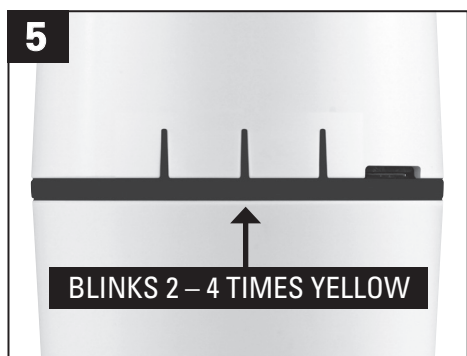
If **mute is active**, the LED light ring **blinks green** at regular intervals.



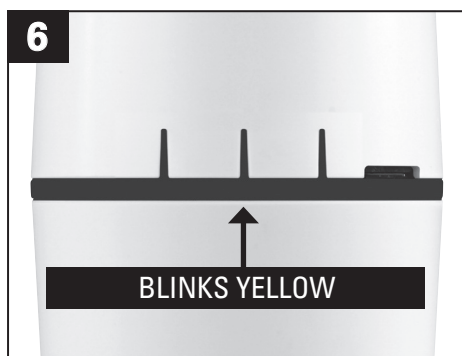
Press the **Select button** to end mute. As confirmation, the LED ring **lights up green** while you press the button.



Press the **Select button 2, 3 or 4 times** at one second intervals in the normal state to activate the slumber function for **1, 3 or 9 hours**.



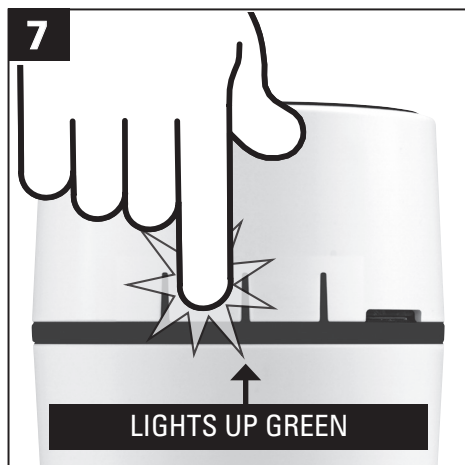
As confirmation, the LED light ring then **blinks yellow 2 to 4 times**, depending on how often you pressed the **Select button** (see table).



While the slumber function is active, the LED light ring **blinks yellow** at regular intervals.

### The slumber function at a glance

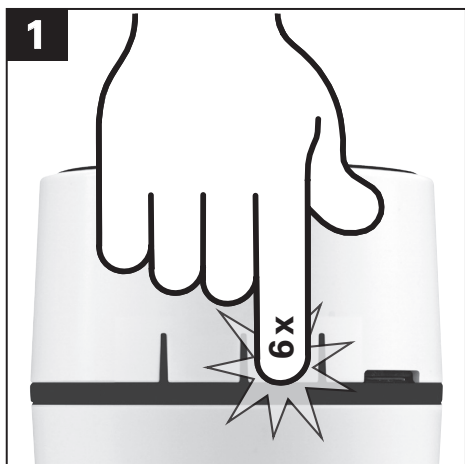
Press button	Mute	Blinking of the LED light ring
2 times	for 1 hour	2 times yellow
3 times	for 3 hours	3 times yellow
4 times	for 9 hours	4 times yellow



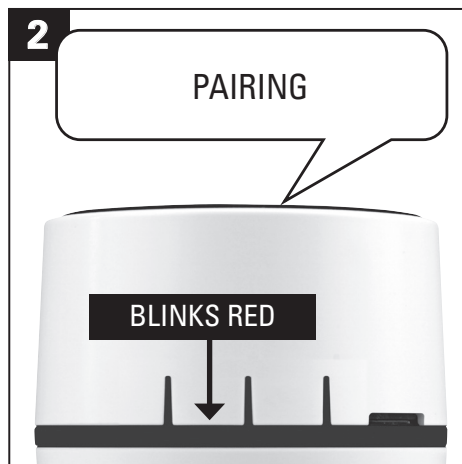
Press the **Select button** to end the slumber function **prematurely**. As confirmation, the LED light ring **lights up green** while you press the button.

- You can use the **slumber function** to mute the wireless doorbell **for a period limited** from the start, i.e. the wireless switches back to active mode automatically.
- You can also end the **slumber function** at any time before the **set period** has expired.
- On the other hand, if you have **set mute** for an unlimited period, you must **end it actively**.

## Couple wireless doorbell and wireless bell button



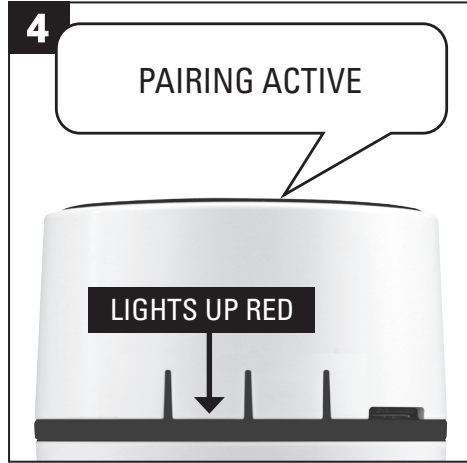
Press the **Menu button** in the normal state **six times**.



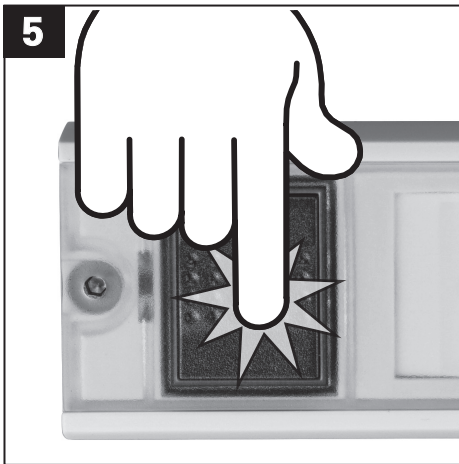
As confirmation, the LED light ring **blinks red**. You will hear **"Pairing"**.



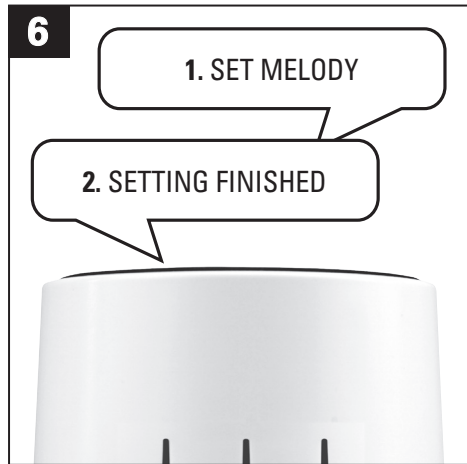
Press the **Select button** within **7 seconds**.



As confirmation, the LED ring **lights up red** and you will hear **"Pairing active"**.



Press the wireless bell button **within 30 seconds**.



You will hear the **set melody** and **"Setting Finished"**. The wireless bell button is now coupled with the wireless doorbell.

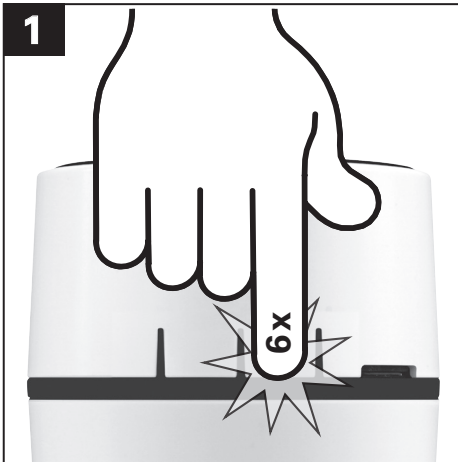
At the end of the process the wireless doorbell returns to the normal state.

Repeat the process to couple additional wireless bell buttons.

**Note: The wireless doorbell automatically returns to the normal state**

- if you have pressed the Select button, and did not press a wireless bell button within 30 seconds at the latest.
- if you do not press the Select button within 7 seconds at the latest after you have pressed the Menu button 5 times.

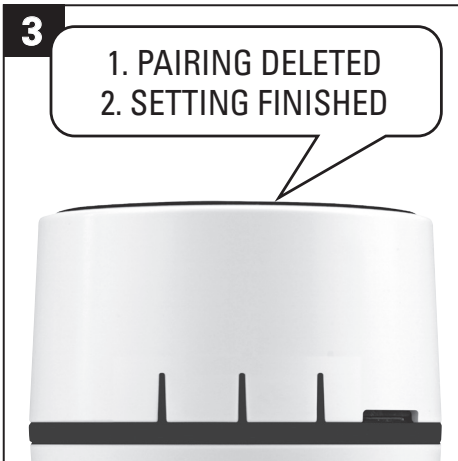
## Deleting the coupling between wireless doorbell and wireless bell buttons



Press the **Menu button** in the normal state **six times**.



Press the **Select button** **within 7 seconds** and keep it **pressed for 10 seconds**. The LED light ring goes out as confirmation.



You hear **"Pairing deleted"** and then **"Setting finished"**.

After the coupling has been deleted, the wireless doorbell no longer responds if a wireless bell button is pressed.

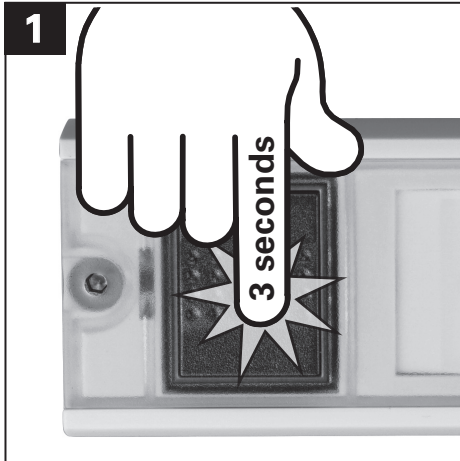
### **Important notice:**

**You always delete all existing couplings.**

It is not possible to delete only one individual coupling between wireless bell buttons and the wireless doorbell!



The alarm function can be used in combination with a wireless bell button type MISTRAL SE03 as a quickly ready, flexible and above all mobile inhouse help call system. In this case, **the wireless doorbell serves as an alarm generator** and the **wireless bell button (MISTRAL SE03 only) acts as a signal generator**. In this way, for example, a person in need of help can easily draw attention to themselves.



Press the **wireless bell button** and keep it pressed for **3 seconds**. The red indicator flashes at the wireless bell button



You will now hear a very loud alarm tone from the wireless doorbell.

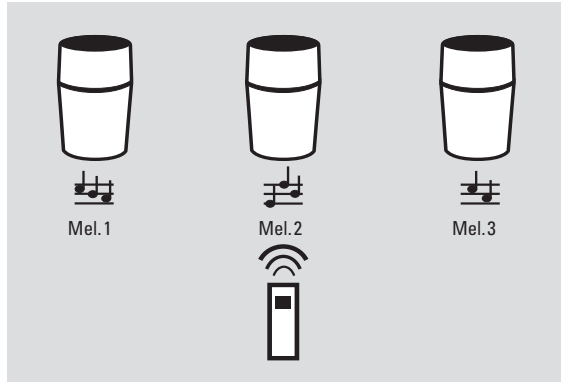
**Important:** To use the integrated alarm function, you must cut through a wire link in the wireless bell button. Please refer to the installation and operating instructions for the wireless bell button MISTRAL SE03.

## Possible combinations / networking

The figures show some of the possible combinations. Among other things, each wireless doorbell can be activated individually or centrally.

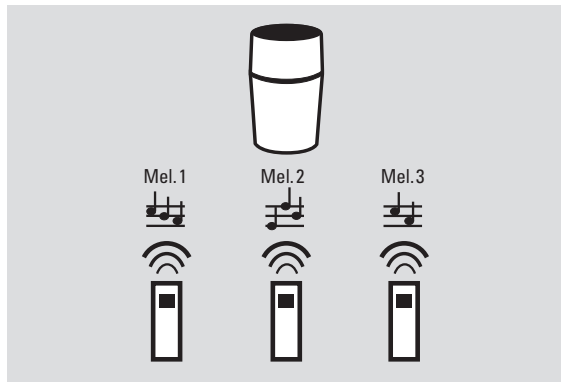
### Central call

One wireless bell button can activate any number of wireless doorbells: One wireless bell button is coupled with several wireless doorbells in different rooms.



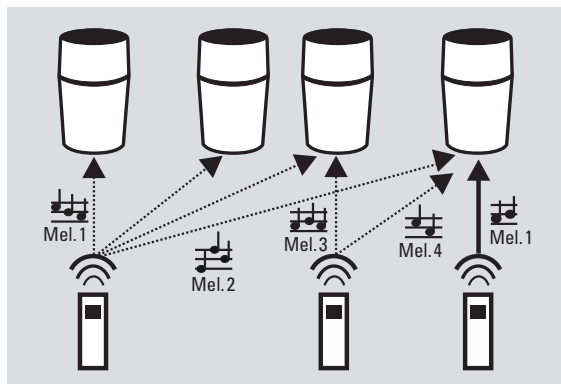
### Individual call

Up to 22 wireless bell buttons can activate 1 wireless doorbell; several wireless bell buttons at different doors/gates are coupled with one wireless doorbell in one room.



### Matrix call

Several wireless doorbells can be activated individually. Several wireless bell buttons at different doors/gates are coupled with several wireless doorbells in different rooms – including with multiple coupling.

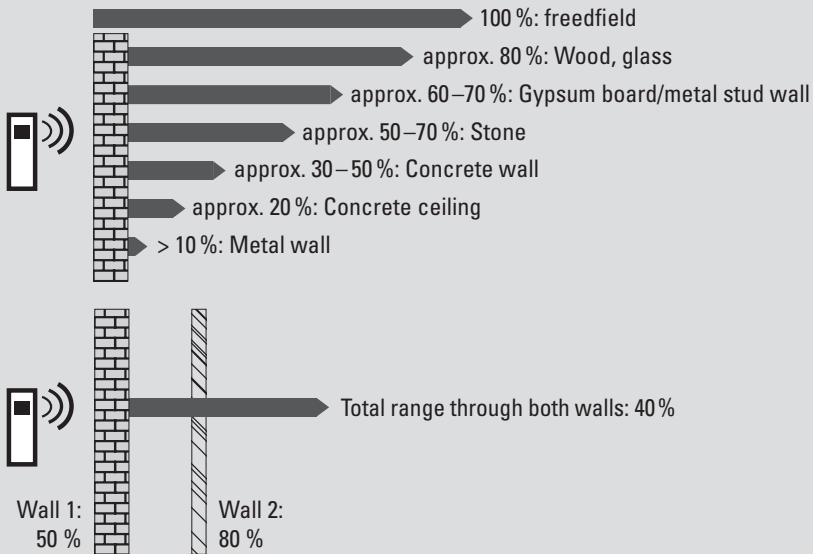


## Radio range

Reduction of the radio range by different materials: The CALIMA 800 has a maximum range of 500 metres in the free field, provided that the wireless bell button MISTRAL SE03 (alternatively wireless motion sensor) is not mounted on metal.

### Overview: Reduction of range by different materials

(Walls, doors, metal parts, etc. can reduce the range significantly.)



## Technical data

### CALIMA 800

Colour	White
Wall mounting	No
Radio frequency	868.35 MHz
Call differentiation	22
Volume	Max. 86 dB(A), depending on the melody
Dimensions	Ø 90 mm x 140 mm
Power supply	Lithium ion rechargeable battery 3,6 V, Power supply unit
Temperature range	5 to 40 °C
Use	in dry rooms only

*\* Please only use the delivered power supply unit!*

## Error – Causes – Help

### 1. The LED of the wireless bell button blinks after it has been pressed, but the wireless doorbell does not respond.

#### 1.1 You have not activated coupling.

Press the Select button within 7 seconds after you have selected the menu item “Coupling”.

#### 1.2 The radio range between wireless doorbell (receiver) and wireless bell button or wireless motion detector (transmitter) is exceeded.

Reduce the distance between the wireless bell button (alternatively wireless motion detector) and the wireless doorbell or change the location of the wireless doorbell. Walls or similar can significantly reduce the range.

#### 1.3 The batteries in the wireless bell button / wireless motion sensor do not have the required voltage / are not inserted correctly (wrong polarity).

Please refer to the relevant operating instructions.

### 2. The wireless doorbell does not respond after you have pressed the coupled wireless bell button or triggered coupled motion detectors.

#### 2.1 Battery is not connected to the gong.

In the battery compartment, insert the plug of the rechargeable battery into the socket of the gong. Make sure that the polarity is correct. Please observe the operating instructions for the CALIMA 800 (from p. 7).

#### 2.2 The battery in the wireless doorbell does not have the required voltage.

Place the CALIMA 800 on the TA55 table adapter and charge the battery.

#### 2.3 The wireless doorbell is muted or in sleep mode.

Press the Select button to cancel the mute / sleep mode.

#### 2.4 The batteries in the wireless bell button / wireless motion sensor do not have the required voltage / are not inserted correctly (wrong polarity).

Please refer to the relevant operating instructions.

### 3. After the melody you hear four beep tones.

#### 3.1 After the call melody you will hear four beeps (when using the radio bell pushbutton MISTRAL SE 03).

The batteries in the MISTRAL SE03 radio bell pushbutton do not have the required voltage. Please refer to the corresponding operating instructions.

### 4. The melody that has been saved in the external melody memory (microSD card) is not played.

#### 4.1 You have made changes to the melodies on the microSD card.

If, for example, a wireless bell button was set with the melody 20 on the microSD card and this melody is no longer available because, for example, there are only 15 melodies left, melody 1 of the internal melody memory is played instead.

**5. The batteries of the CALIMA 800 are quickly discharged.****5.1. You have copied very long call melodies on the microSD card.**

If possible, do not use call melodies with long playing times on the microSD card, as they use up more battery capacity. If possible, select call melodies with a short playing time if you want to have a long battery life. Possibly, use the optional TA55 desktop adapter to extend battery life.

**5.2. The Bluetooth® function was switched on for a long time.**

Stop the Bluetooth® function when you no longer want to stream music or use the TA55 table adapter to extend the battery life.

**6. The microSD card is not recognised.****6.1 The microSD card is not suitable.**

You can use microSD cards up to 32 GB (available as an optional accessory).

**7. The call melodies from the microSD card are not played.****7.1 The MP3 files are not stored in the main directory of the microSD card.**

Check the location of the call melodies and, if necessary, change it as described.

We recommend that you only save MP3 files on the microSD card, which are intended as call melodies, if possible. Preferably delete files that are not required.

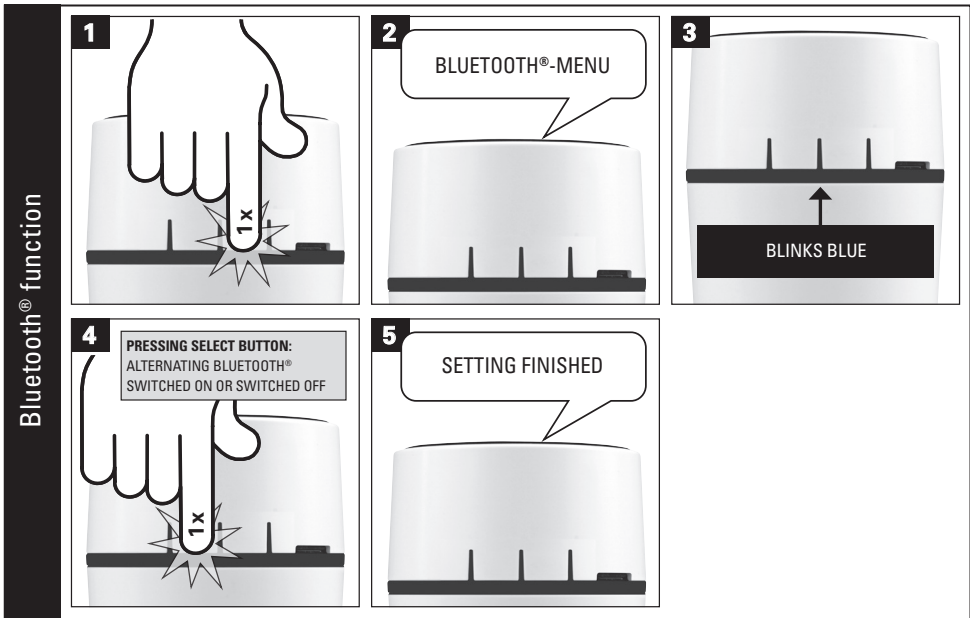
**8. After further ringing melodies have been added to the microSD card, they will not be played.****8.1 The CALIMA 800 is not in the normal state.**

Wait about 30 seconds until the Calima 800 is in the normal state. Then call up the menu item "Melody selection", since the Calima 800 only recognises the change of microSD card in the normal state.

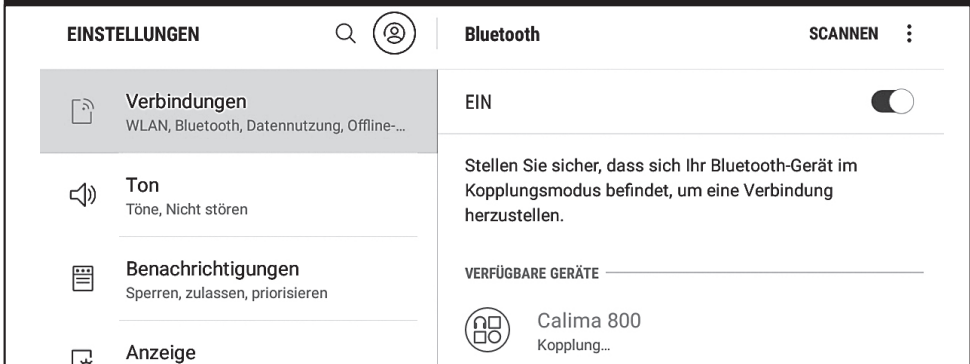
**9. It is not possible to switch between the internal and external melody memory.****9.1 The CALIMA 800 is not in the basic state.**

Wait approx. 30 seconds until the CALIMA 800 is in the basic state. Then call up the menu item "Melody selection", as CALIMA 800 only recognises the change of microSD card in the basic state.

## Quick-start guide

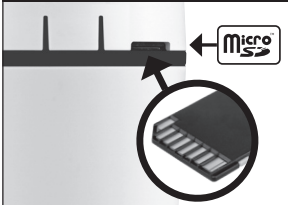
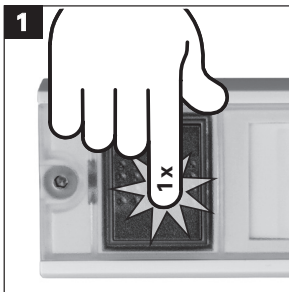
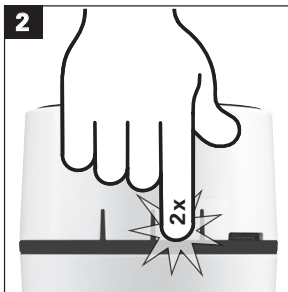
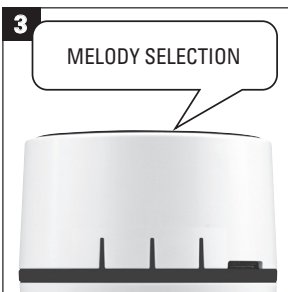
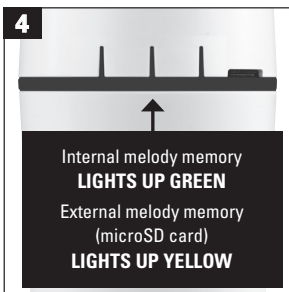
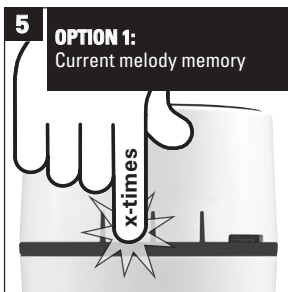
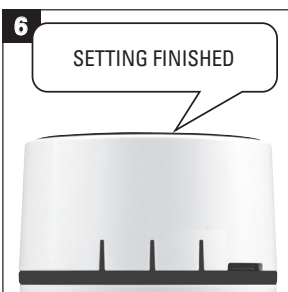
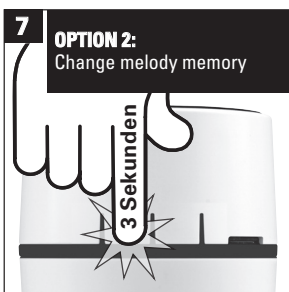
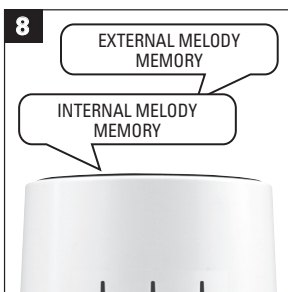
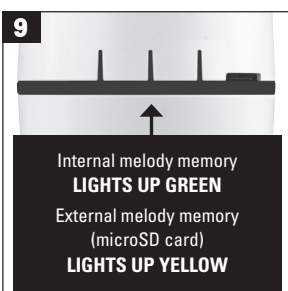
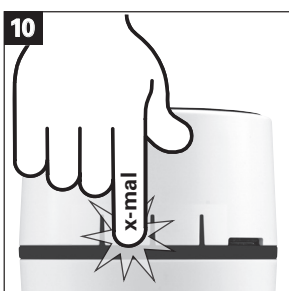
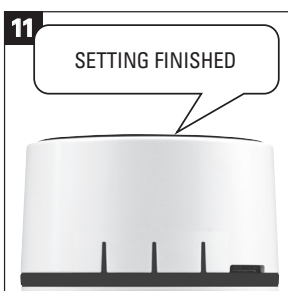


## Couple audio sources via Bluetooth®



In the **Bluetooth®** menu on your smartphone or other **Bluetooth®** enabled audio source, you will see „**CALIMA 800**“, when the Bluetooth® function on the CALIMA 800 is switched on. Connect your Bluetooth® audio source with the CALIMA 800.

**Start a program with audio output on a paired device near Calima 800.** Adjust the volume of the audio output on the paired device.

<p><b>ONLY NECESSARY FOR OPTION 2</b></p> 	<p><b>1</b></p> 	<p><b>2</b></p> 
<p><b>3</b></p> <p>MELODY SELECTION</p> 	<p><b>4</b></p>  <p>Internal melody memory <b>LIGHTS UP GREEN</b> External melody memory (microSD card) <b>LIGHTS UP YELLOW</b></p>	<p><b>5</b></p> <p><b>OPTION 1:</b> Current melody memory</p> 
<p><b>6</b></p> <p>SETTING FINISHED</p> 	<p><b>7</b></p> <p><b>OPTION 2:</b> Change melody memory</p>  <p>3 Sekunden</p>	<p><b>8</b></p> <p>EXTERNAL MELODY MEMORY</p> <p>INTERNAL MELODY MEMORY</p> 
<p><b>9</b></p>  <p>Internal melody memory <b>LIGHTS UP GREEN</b> External melody memory (microSD card) <b>LIGHTS UP YELLOW</b></p>	<p><b>10</b></p>  <p>x-mal</p>	<p><b>11</b></p> <p>SETTING FINISHED</p> 

## Quick-start guide

### Colour selection LED light ring

**1** 1x

**2** 3x

**3** COLOUR SELECTION  
LIGHTS UP IN THE CURRENTLY SET COLOUR

**4** x-times

**5** SETTING FINISHED  
LIGHTS UP (WHEN THE WIRELESS BELL BUTTON IS PRESSED) IN THE SET COLOUR

### LED Setting

**1** 4x

**2** LED SETTING

**3** x-times

**4** FLASHES / LIGHTS UP / BLINKS / SWITCHED OFF

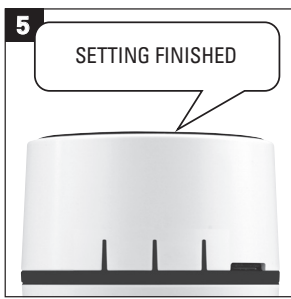
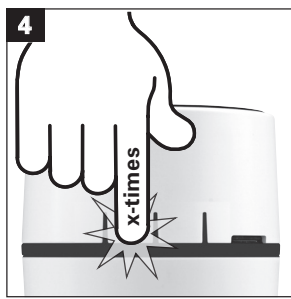
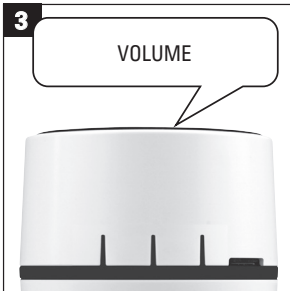
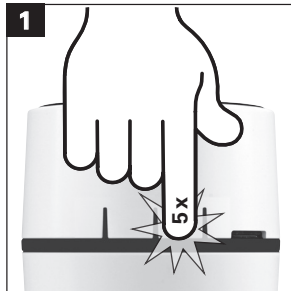
**5** SETTING FINISHED

Selection options always start from the current setting in the following order:

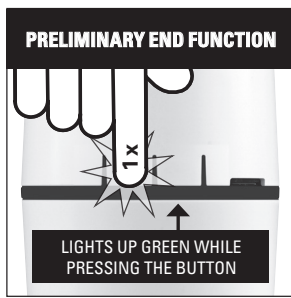
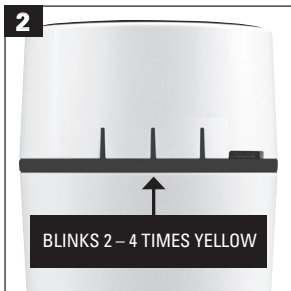
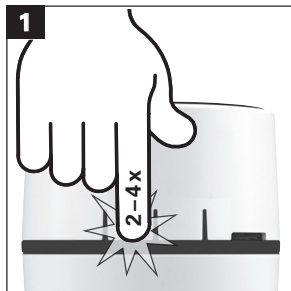
- White flashing
- Coloured lightning
- Coloured blinking
- Switched off



Volume



Slumber function



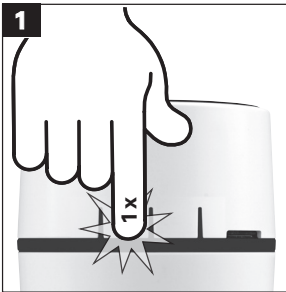
1) short approx. all 8 seconds

The slumber function at a glance

Press button	Mute	Blinking of the LED light ring
2 times	for 1 hour	2 times yellow
3 times	for 3 hours	3 times yellow
4 times	for 9 hours	4 times yellow

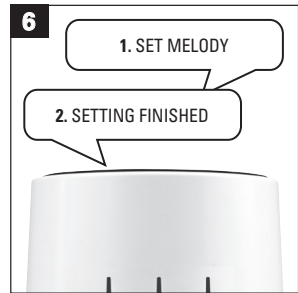
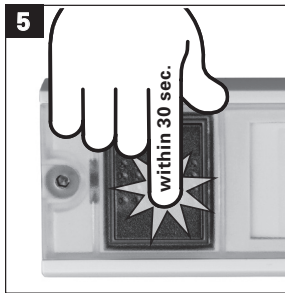
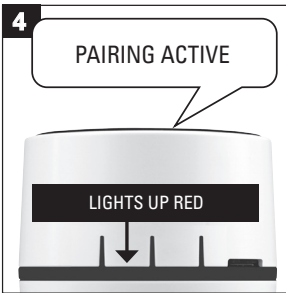
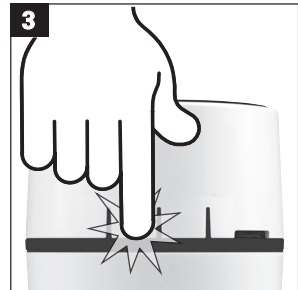
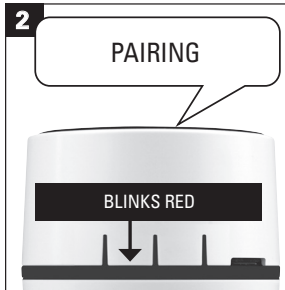
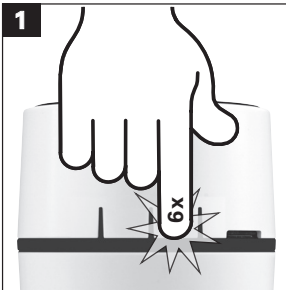
## Quick-start guide

### Mute

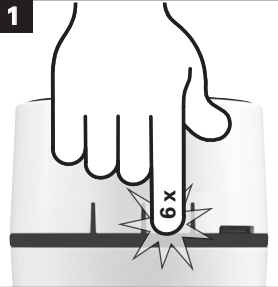


1) short approx. all 8 seconds

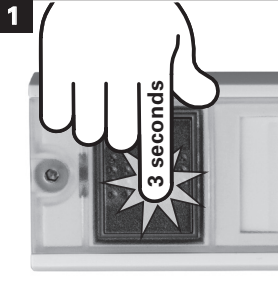
### Coupling



Delete coupling



Alarm function



**Important:** To use the integrated alarm function, you must cut through a wire link in the wireless bell button. Please refer to the installation and operating instructions for the wireless bell button MISTRAL SE03.

The statutory warranty period applies. Excluded from this warranty are defects that have occurred due to improper handling, improper use or disregard of the installation and operating instructions.

Furthermore, the manufacturer reserves the right to change the contents of this manual without prior notification. The information contained in this manual has been carefully prepared and checked, but the manufacturer does not accept any responsibility for its use. The same applies to the persons or companies that have been involved in the preparation and production of this manual.

**GROTHE GmbH**  
Löhestraße 22  
D- 53773 Hennef  
[service@grothe.de](mailto:service@grothe.de)  
[www.grothe.de](http://www.grothe.de)

**GROTHE**  
URMET|GROUP