

SIGNALING COLUMN AS-INTERFACE ELEMENT WITH EXT. AUX. VOLTAGE OR WITHOUT EXT. AUX. VOLTAGE 24V DC, FOR MAX.4 SIGNAL ELEMENTS



Figure similar

General technical data:	
product brandname	SIRIUS
Product designation	AS-Interface module
Type of voltage of the operating voltage	DC
Operating voltage	
• at DC rated value	18.5 ... 31.6 V
• 1 at DC rated value	24 V
Equipment marking	
• acc. to DIN EN 61346-2	B
• acc. to DIN EN 81346-2	B
Mechanical data:	
Outer diameter of the signal column element	70 mm
Ambient conditions:	
Ambient temperature during operation	-20 ... +50 °C
Protection class IP	IP65
Design of the interface AS-interface protocol	Yes

Height	65.5 mm
Width	70 mm

### Certificates/approvals

General Product Approval	EMC	Declaration of Conformity	other
--------------------------	-----	---------------------------	-------



[Confirmation](#)

### Further information

**Information- and Downloadcenter (Catalogs, Brochures,...)**

<http://www.siemens.com/industrial-controls/catalogs>

**Industry Mall (Online ordering system)**

<https://mall.industry.siemens.com/mall/en/en/Catalog/product?mlfb=8WD4428-0BE>

**Cax online generator**

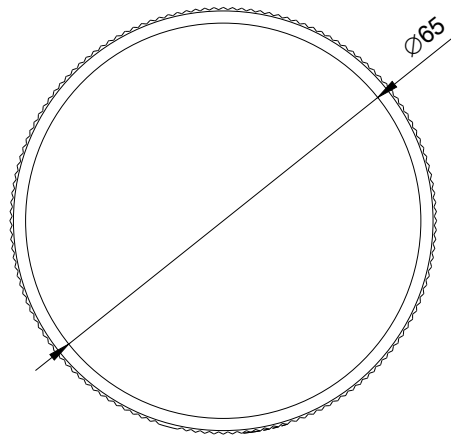
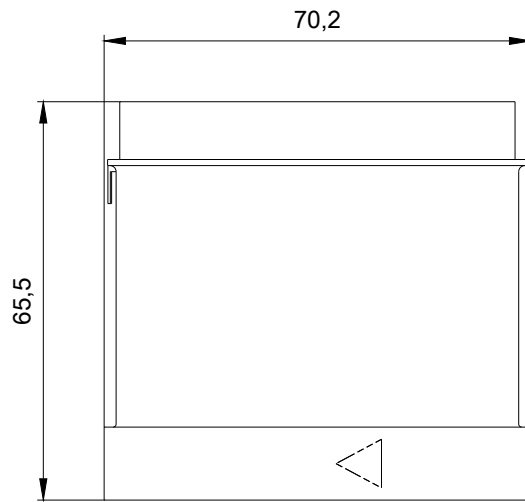
<http://support.automation.siemens.com/WW/CAXorder/default.aspx?lang=en&mlfb=8WD4428-0BE>

**Service&Support (Manuals, Certificates, Characteristics, FAQs,...)**

<https://support.industry.siemens.com/cs/ww/en/ps/8WD4428-0BE>

**Image database (product images, 2D dimension drawings, 3D models, device circuit diagrams, EPLAN macros, ...)**

[http://www.automation.siemens.com/bilddb/cax\\_de.aspx?mlfb=8WD4428-0BE&lang=en](http://www.automation.siemens.com/bilddb/cax_de.aspx?mlfb=8WD4428-0BE&lang=en)



last modified:

W9.4444;  
W9.375; 8WD4428-0Bx\_ALL  
07/26/2017