

SIGNAL COLUMN DIAMETER 50 MM; SINGLE ELEMENT IP54;
FLASHING LIGHT ELEMENT, LED CLEAR 230 V AC/DC



Figure similar

General technical data:	
product brandname	SIRIUS
Product designation	Repeated-flash light element
Design of the optical signal	blinklight
Type of voltage of the operating voltage	AC
Operating voltage	
• 1 at AC at 50 Hz rated value	230 V
• 1 at AC at 60 Hz rated value	230 V
Relative positive tolerance of the operating voltage	10 %
Relative negative tolerance of the operating voltage	-10 %
Service life of LED	100 000 h
Equipment marking	
• acc. to DIN EN 61346-2	P
• acc. to DIN EN 81346-2	P
Mechanical data:	
Outer diameter of the signal column element	50 mm

Lamp:	
Product component Light source	Yes
Type of light source	LED
Flash frequency	1 Hz

Ambient conditions:	
Ambient temperature during operation	-20 ... +50 °C
Protection class IP	IP54
Height	67 mm
Width	52 mm

Certificates/approvals			
General Product Approval	EMC	Declaration of Conformity	other



[Confirmation](#)

Further information

Information- and Downloadcenter (Catalogs, Brochures,...)

<http://www.siemens.com/industrial-controls/catalogs>

Industry Mall (Online ordering system)

<https://mall.industry.siemens.com/mall/en/en/Catalog/product?mlfb=8WD4250-5BE>

Cax online generator

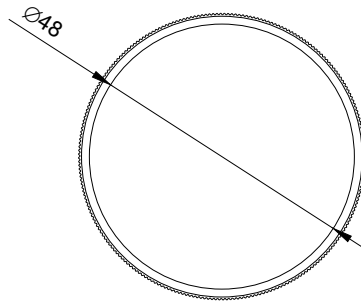
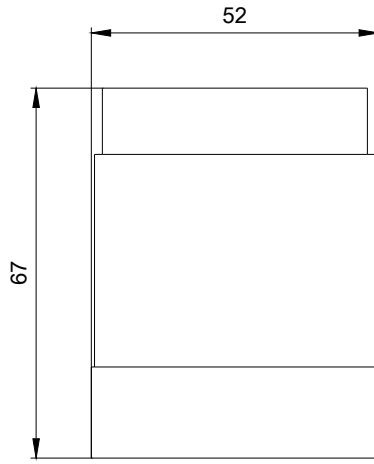
<http://support.automation.siemens.com/WW/CAXorder/default.aspx?lang=en&mlfb=8WD4250-5BE>

Service&Support (Manuals, Certificates, Characteristics, FAQs,...)

<https://support.industry.siemens.com/cs/ww/en/ps/8WD4250-5BE>

Image database (product images, 2D dimension drawings, 3D models, device circuit diagrams, EPLAN macros, ...)

http://www.automation.siemens.com/bilddb/cax_de.aspx?mlfb=8WD4250-5BE&lang=en



last modified:



W9.4444; 8WD42.-..._ALL
 W6.8611; 8WD42.-..._ALL
 07/26/2017