



General technical data:

product brandname	SIRIUS
Product designation	Continuous light element
Design of the optical signal	continous light
Type of voltage of the operating voltage	AC/DC
Operating voltage	
<ul style="list-style-type: none"> at DC rated value 	12 ... 240 V
<ul style="list-style-type: none"> at AC at 50 Hz rated value 	12 ... 240 V
<ul style="list-style-type: none"> at AC at 60 Hz rated value 	12 ... 240 V
Equipment marking	
<ul style="list-style-type: none"> acc. to DIN EN 61346-2 	P
<ul style="list-style-type: none"> acc. to DIN EN 81346-2 	P

Mechanical data:

Outer diameter of the signal column element	50 mm
---	-------

Lamp:

Product component Light source	No
Type of light source	filament lamp / LED
Mounting type	BA 15d

Ambient conditions:

Ambient temperature during operation	-20 ... +60 °C
Protection class IP	IP54
Height	67 mm
Width	52 mm

Certificates/approvals

General Product Approval	EMC	Declaration of Conformity	other
--------------------------	-----	---------------------------	-------



[Confirmation](#)

Further information

Information- and Downloadcenter (Catalogs, Brochures,...)

<http://www.siemens.com/industrial-controls/catalogs>

Industry Mall (Online ordering system)

<https://mall.industry.siemens.com/mall/en/en/Catalog/product?mlfb=8WD4200-1AF>

Cax online generator

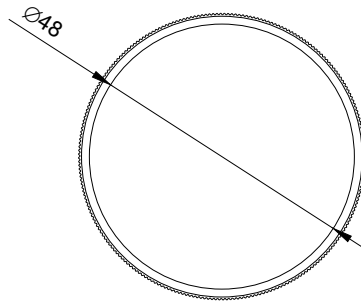
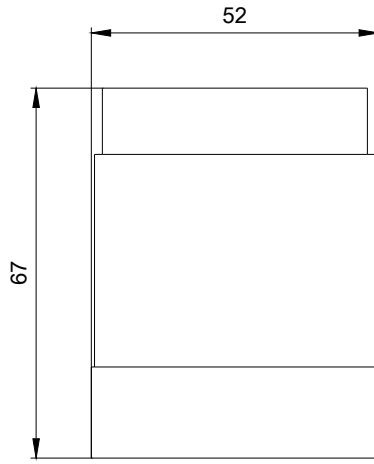
<http://support.automation.siemens.com/WW/CAXorder/default.aspx?lang=en&mlfb=8WD4200-1AF>

Service&Support (Manuals, Certificates, Characteristics, FAQs,...)

<https://support.industry.siemens.com/cs/ww/en/ps/8WD4200-1AF>

Image database (product images, 2D dimension drawings, 3D models, device circuit diagrams, EPLAN macros, ...)

http://www.automation.siemens.com/bilddb/cax_de.aspx?mlfb=8WD4200-1AF&lang=en



last modified:



W9.4444; 8WD42.-..._ALL
 W6.8611; 8WD42.-..._ALL
 07/26/2017