

STEADY-LIGHT ELEMENTS, YELLOW AC/DC 24V...230V

General technical data:	
product brandname	SIRIUS
Product designation	Continuous light element
Design of the optical signal	continous light
Type of voltage of the operating voltage	AC/DC
Operating voltage	
<ul style="list-style-type: none"> at DC rated value 	12 ... 240 V
<ul style="list-style-type: none"> at AC at 50 Hz rated value 	12 ... 240 V
<ul style="list-style-type: none"> at AC at 60 Hz rated value 	12 ... 240 V
Equipment marking	
<ul style="list-style-type: none"> acc. to DIN EN 61346-2 	P
<ul style="list-style-type: none"> acc. to DIN EN 81346-2 	P

Mechanical data:	
Outer diameter of the signal column element	50 mm

Lamp:	
Product component Light source	No
Type of light source	filament lamp / LED
Mounting type	BA 15d

Ambient conditions:	
Ambient temperature during operation	-20 ... +60 °C
Protection class IP	IP54
Height	67 mm
Width	52 mm

Certificates/approvals			
General Product Approval	EMC	Declaration of Conformity	other

[Confirmation](#)

Further information

Information- and Downloadcenter (Catalogs, Brochures,...)
<http://www.siemens.com/industrial-controls/catalogs>

Industry Mall (Online ordering system)

<https://mall.industry.siemens.com/mall/en/en/Catalog/product?mlfb=8WD4200-1AD>

Cax online generator

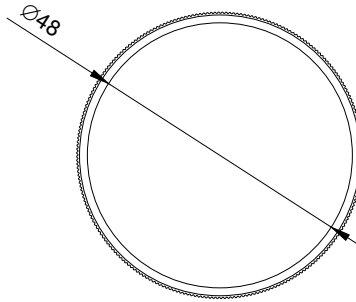
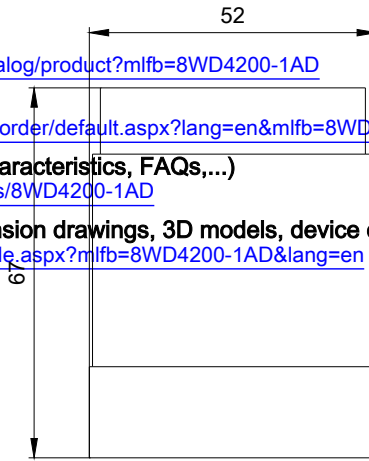
<http://support.automation.siemens.com/WW/CAXorder/default.aspx?lang=en&mlfb=8WD4200-1AD>

Service&Support (Manuals, Certificates, Characteristics, FAQs,...)

<https://support.industry.siemens.com/cs/ww/en/ps/8WD4200-1AD>

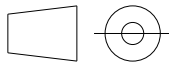
Image database (product images, 2D dimension drawings, 3D models, device circuit diagrams, EPLAN macros, ...)

http://www.automation.siemens.com/bilddb/cax_de.aspx?mlfb=8WD4200-1AD&lang=en



last modified:

07/26/2017



W9.4444;
W6.8811; 8WD42.-..._ALL