

RCCB, 2-pole, type A, short- time delayed, In: 40 A, 300 mA, Un AC: 230 V



Model	
Product brand name	SENTRON
Product designation	RCCB
Design of the product	Short-time delayed
General technical data	
Number of poles	2
Size of installation devices / acc. to DIN 43880	1
Protection against electrical shock	Finger and back-of-hand safe
Short-circuit current rating	10 kA
circuit-breaker / Design	5SV3
Mechanical service life (switching cycles) / typical	10 000
Switching function / short-term delayed	Yes
Overvoltage category	III
Supply voltage	
Supply voltage	
<ul style="list-style-type: none"> <li>• at AC / rated value</li> <li>• for testing equipment / minimum</li> </ul>	<p>230 V</p> <p>100 V</p>
Supply voltage frequency	

- rated value

50 Hz

### Protection class

**Protection class IP**

IP20, if the distribution board is installed, with connected conductors

### Switching capacity

Switching capacity current / according to IEC 61008-1 / rated value

0.5 kA

### Dissipation

**Power loss [W]**

- for rated value of the current / at AC / in hot operating state / per pole

1 W

### Electricity

**Tripping residual current / rated value**

300 mA

rated current  $I_n$  / IEC, DIN/VDE / at 40 Cel

40 A

**Type of fault current**

A

Current / at AC / rated value

40 A

**I<sup>2</sup>t-value / permissible**
15 620 A<sup>2</sup>·s

Surge current resistance / rated value

3 kA

**Operating frequency**

50/60Hz

### Product details

Product feature / silicon-free

Yes

Product extension / can be installed / supplementary devices

Yes

### Number

**Number of test cycles / for environmental testing / acc. to IEC 60068-2-30**

28

### Connections

**Connectable conductor cross-section / stranded**

- minimum
- maximum

0.75 mm<sup>2</sup>35 mm<sup>2</sup>

Connectable conductor cross-section / solid

- minimum
- maximum

0.75 mm<sup>2</sup>35 mm<sup>2</sup>
**Tightening torque / with screw-type terminals**

- minimum
- maximum

2.5 N·m

3 N·m

Position / of power supply cord

top or bottom

### Mechanical Design

**Height**

90 mm

**Width**

36 mm

Depth	70 mm
Mounting position	any
Installation depth	70 mm
Number of width units	2
Mounting type	DIN rail (REG)
Net weight	200 g

#### Environmental conditions

##### Ambient temperature

- minimum -25 °C
- maximum 45 °C
- during storage / minimum permissible -40 °C
- during storage / maximum permissible 75 °C

#### Certificates

##### Equipment marking

- acc. to DIN EN 61346-2 F
- acc. to DIN EN 81346-2 F

#### General Product Approval

#### Declaration of Conformity



CCC



ÖVE



VDE

[Miscellaneous](#)



EG-Konf.

#### Further information

##### Information- and Downloadcenter (Catalogs, Brochures,...)

<http://www.siemens.com/lowvoltage/catalogs>

##### Industry Mall (Online ordering system)

<https://mall.industry.siemens.com/mall/en/en/Catalog/product?mlfb=5SV3614-6KK01>

##### Service&Support (Manuals, Certificates, Characteristics, FAQs,...)

<https://support.industry.siemens.com/cs/ww/en/ps/5SV3614-6KK01>

##### Image database (product images, 2D dimension drawings, 3D models, device circuit diagrams, ...)

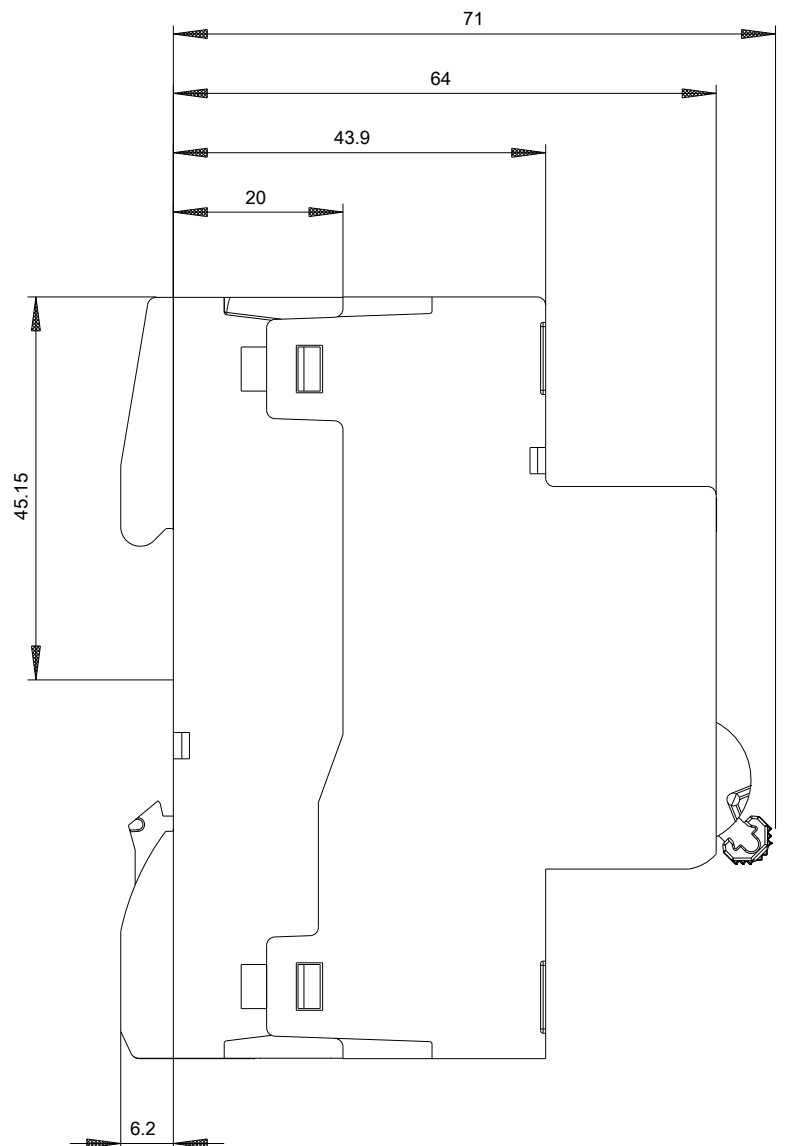
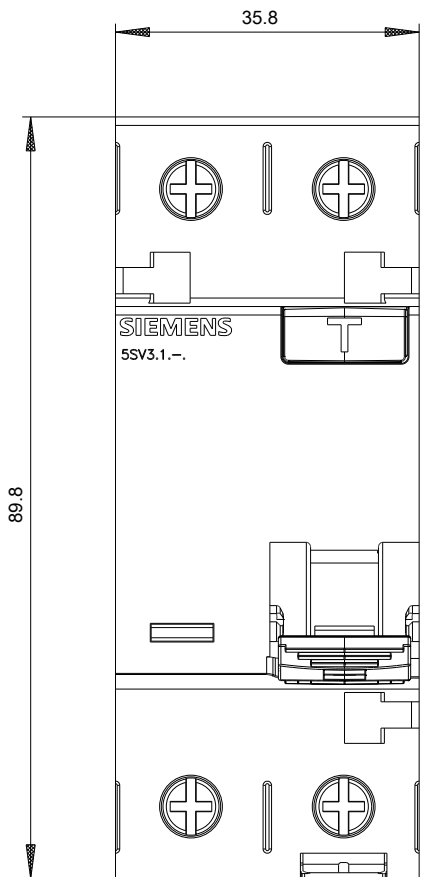
[http://www.automation.siemens.com/bilddb/cax\\_en.aspx?mlfb=5SV3614-6KK01](http://www.automation.siemens.com/bilddb/cax_en.aspx?mlfb=5SV3614-6KK01)

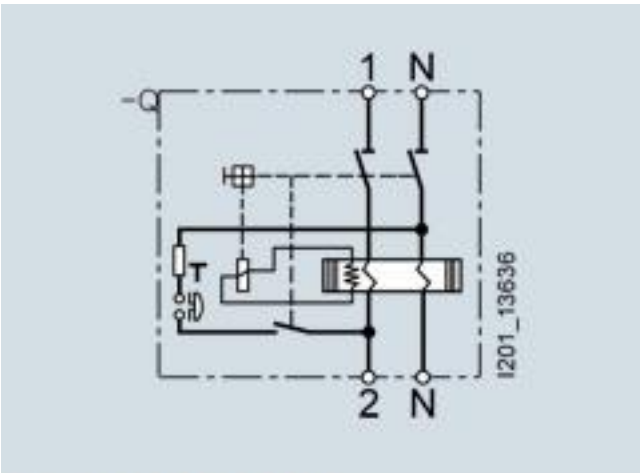
##### CAX-Online-Generator

<http://www.siemens.com/cax>

##### Tender specifications

<http://www.siemens.com/specifications>





Internal circuit diagram IEC