

RCCB, 2-pole, type A, In: 63 A, 30 mA, Un AC: 230 V, SIGRES (harsh ambient conditions)



Model	
Product brand name	SENTRON
Product designation	RCCB
Design of the product	Instantaneous
Product variations	SIGRES (harsh ambient conditions)
General technical data	
Number of poles	2
Size of installation devices / acc. to DIN 43880	1
Protection against electrical shock	Finger and back-of-hand safe
Short-circuit current rating	10 kA
circuit-breaker / Design	5SV3
Mechanical service life (switching cycles) / typical	10 000
Switching function / short-term delayed	No
Overvoltage category	III
Supply voltage	
Supply voltage	
<ul style="list-style-type: none"> <li>at AC / rated value</li> </ul>	125 V
<ul style="list-style-type: none"> <li>for testing equipment / minimum</li> </ul>	195 V

<b>Supply voltage frequency</b>	
• rated value	50 Hz
<b>Protection class</b>	
<b>Protection class IP</b>	IP20, if the distribution board is installed, with connected conductors
<b>Switching capacity</b>	
Switching capacity current / according to IEC 61008-1 / rated value	0.8 kA
<b>Dissipation</b>	
<b>Power loss [W]</b>	5.47 W
• for rated value of the current / at AC / in hot operating state / per pole	
<b>Electricity</b>	
<b>Tripping residual current / rated value</b>	30 mA
rated current $I_n$ / IEC, DIN/VDE / at 40 Cel	63 A
<b>Type of fault current</b>	A
Current / at AC / rated value	63 A
<b><math>I^2t</math>-value / permissible</b>	25 410 A <sup>2</sup> ·s
Surge current resistance / rated value	1 kA
<b>Product details</b>	
Product feature / silicon-free	Yes
Product extension / can be installed / supplementary devices	Yes
<b>Number</b>	
<b>Number of test cycles / for environmental testing / acc. to IEC 60068-2-30</b>	28
<b>Connections</b>	
<b>Connectable conductor cross-section / stranded</b>	
• minimum	0.75 mm <sup>2</sup>
• maximum	35 mm <sup>2</sup>
<b>Connectable conductor cross-section / solid</b>	
• minimum	0.75 mm <sup>2</sup>
• maximum	35 mm <sup>2</sup>
<b>Tightening torque / with screw-type terminals</b>	
• minimum	2.5 N·m
• maximum	3 N·m
Position / of power supply cord	top or bottom
<b>Mechanical Design</b>	
<b>Height</b>	90 mm
<b>Width</b>	36 mm

Depth	70 mm
Mounting position	any
Installation depth	70 mm
Number of width units	2
Mounting type	DIN rail (REG)

#### Environmental conditions

##### Ambient temperature

- minimum -25 °C
- maximum 45 °C
- during storage / minimum permissible -40 °C
- during storage / maximum permissible 75 °C

#### Certificates

##### Equipment marking

- acc. to DIN EN 61346-2 F
- acc. to DIN EN 81346-2 F

#### General Product Approval

#### Declaration of Conformity



[Miscellaneous](#)



#### Further information

##### Information- and Downloadcenter (Catalogs, Brochures,...)

<http://www.siemens.com/lowvoltage/catalogs>

##### Industry Mall (Online ordering system)

<https://mall.industry.siemens.com/mall/en/en/Catalog/product?mlfb=5SV3316-6KK12>

##### Service&Support (Manuals, Certificates, Characteristics, FAQs,...)

<https://support.industry.siemens.com/cs/ww/en/ps/5SV3316-6KK12>

##### Image database (product images, 2D dimension drawings, 3D models, device circuit diagrams, ...)

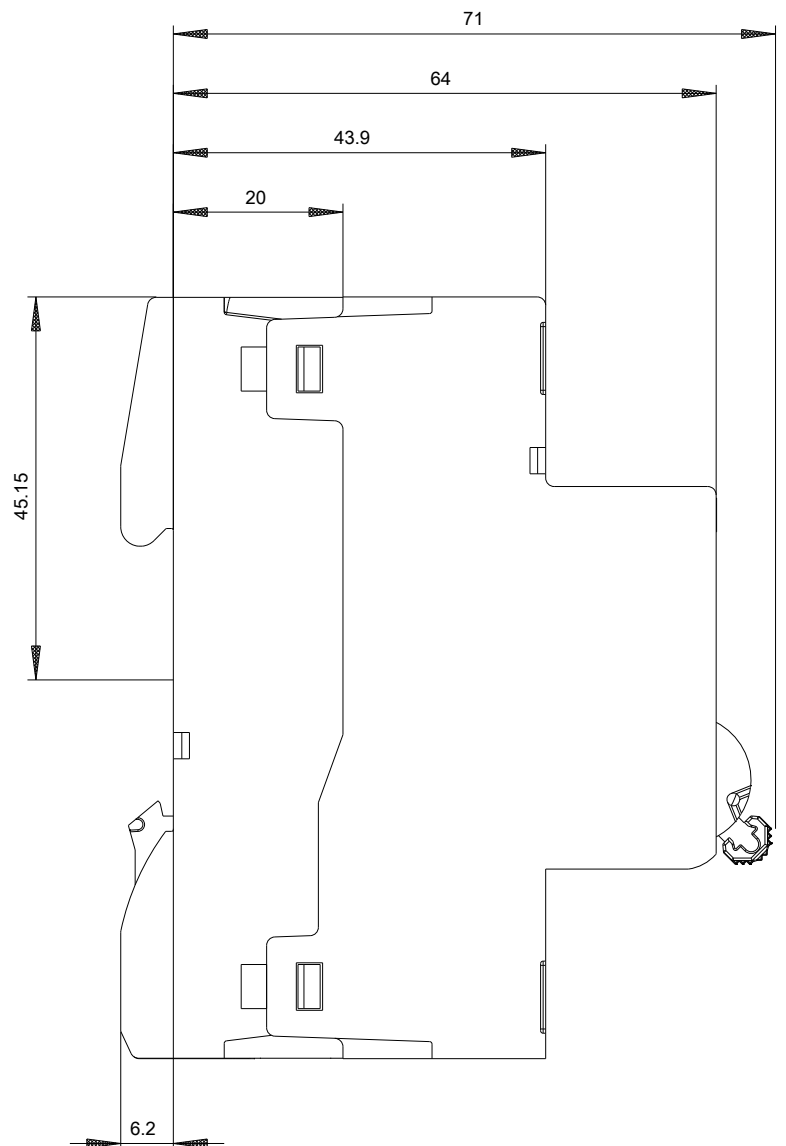
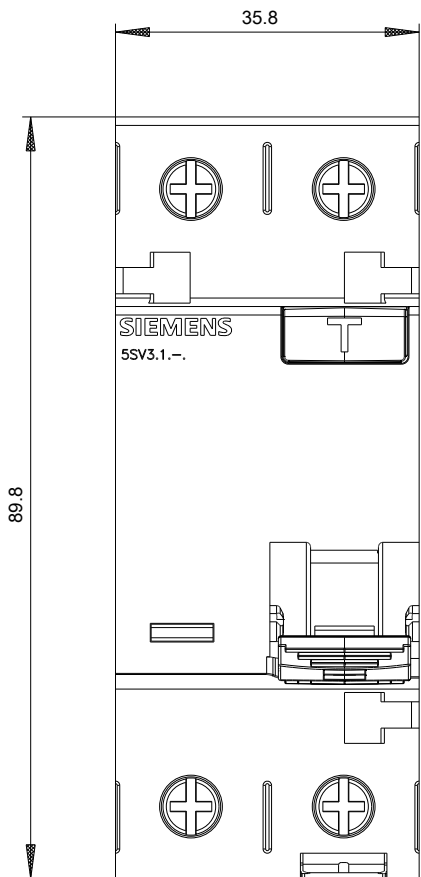
[http://www.automation.siemens.com/bilddb/cax\\_en.aspx?mlfb=5SV3316-6KK12](http://www.automation.siemens.com/bilddb/cax_en.aspx?mlfb=5SV3316-6KK12)

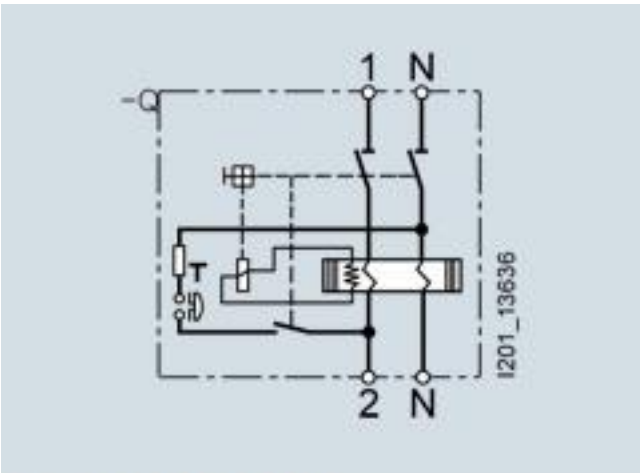
##### CAX-Online-Generator

<http://www.siemens.com/cax>

##### Tender specifications

<http://www.siemens.com/specifications>





Internal circuit diagram IEC