

RCCB, 2-pole, type F, short- time delayed, In: 40 A, 30 mA, Un AC: 230 V



Model	
Product brand name	SENTRON
Product designation	RCCB
Design of the product	Short-time delayed
General technical data	
Number of poles	2
Size of installation devices / acc. to DIN 43880	1
Protection against electrical shock	Finger and back-of-hand safe
Short-circuit current rating	10 kA
circuit-breaker / Design	5SV3
Mechanical service life (switching cycles) / typical	10 000
Switching function / short-term delayed	Yes
Overvoltage category	III
Supply voltage	
Supply voltage	
<ul style="list-style-type: none"> <li>at AC / rated value</li> <li>for testing equipment / minimum</li> </ul>	<p>230 V</p> <p>195 V</p>
Supply voltage frequency	

• rated value

50 Hz

## Protection class

### Protection class IP

IP20, if the distribution board is installed, with connected conductors

## Switching capacity

Switching capacity current / according to IEC 61008-1 / rated value

0.5 kA

## Dissipation

### Power loss [W]

• for rated value of the current / at AC / in hot operating state / per pole

1.5 W

## Electricity

### Tripping residual current / rated value

30 mA

rated current  $I_n$  / IEC, DIN/VDE / at 40 Cel

40 A

### Type of fault current

F

Current / at AC / rated value

40 A

### I<sup>2</sup>t-value / permissible

15 620 A<sup>2</sup>·s

Surge current resistance / rated value

3 kA

### Operating frequency

50/60Hz

## Product details

Product feature / silicon-free

Yes

Product extension / can be installed / supplementary devices

Yes

## Number

Number of test cycles / for environmental testing / acc. to IEC 60068-2-30

28

## Connections

### Connectable conductor cross-section / stranded

• minimum

0.75 mm<sup>2</sup>

• maximum

35 mm<sup>2</sup>

Connectable conductor cross-section / solid

• minimum

0.75 mm<sup>2</sup>

• maximum

35 mm<sup>2</sup>

### Tightening torque / with screw-type terminals

• minimum

2.5 N·m

• maximum

3 N·m

Position / of power supply cord

top or bottom

## Mechanical Design

### Height

90 mm

### Width

36 mm

Depth	70 mm
Mounting position	any
Installation depth	70 mm
Number of width units	2
Mounting type	DIN rail (REG)
Net weight	200 g

### Environmental conditions

<b>Ambient temperature</b>	
• minimum	-25 °C
• maximum	45 °C
• during storage / minimum permissible	-40 °C
• during storage / maximum permissible	75 °C

### Certificates

<b>Equipment marking</b>	
• acc. to DIN EN 61346-2	F
• acc. to DIN EN 81346-2	F

### General Product Approval

### Declaration of Conformity



[Miscellaneous](#)



### Further information

#### Information- and Downloadcenter (Catalogs, Brochures,...)

<http://www.siemens.com/lowvoltage/catalogs>

#### Industry Mall (Online ordering system)

<https://mall.industry.siemens.com/mall/en/en/Catalog/product?mlfb=5SV3314-3>

#### Service&Support (Manuals, Certificates, Characteristics, FAQs,...)

<https://support.industry.siemens.com/cs/ww/en/ps/5SV3314-3>

#### Image database (product images, 2D dimension drawings, 3D models, device circuit diagrams, ...)

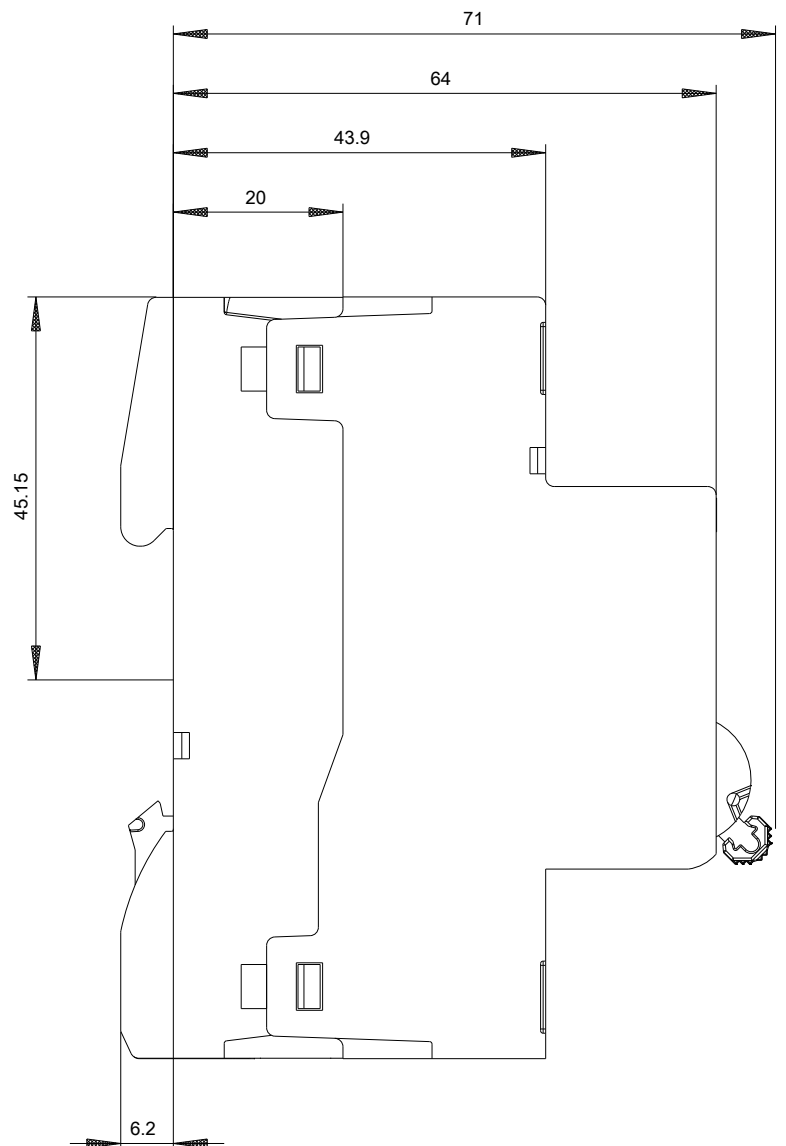
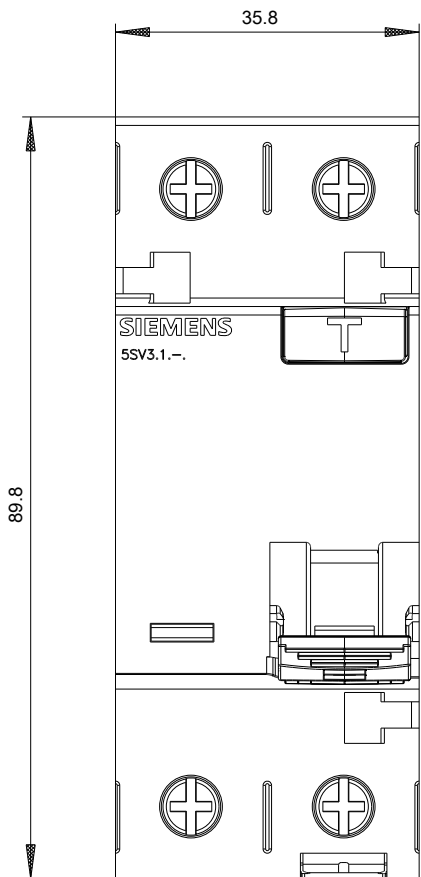
[http://www.automation.siemens.com/bilddb/cax\\_en.aspx?mlfb=5SV3314-3](http://www.automation.siemens.com/bilddb/cax_en.aspx?mlfb=5SV3314-3)

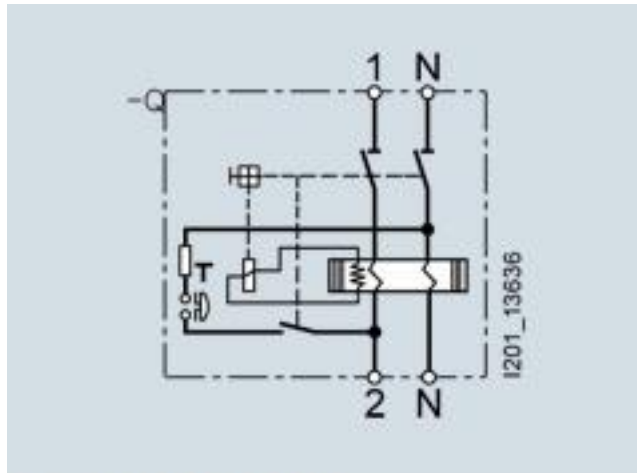
#### CAX-Online-Generator

<http://www.siemens.com/cax>

#### Tender specifications

<http://www.siemens.com/specifications>





Internal circuit diagram IEC