

VOLTAGE RELEASE, AC 210...240V, 50/60HZ, 100% ED, AC 190...330V, 50/60HZ, 5SEC ED, DC 190...330V, 5SEC ED, W. SCREW CONNECTION; FOR CIRCUIT-BREAKERS 3RV2



General technical data	
Product brand name	SIRIUS
Product designation	shunt release
Size of the circuit-breaker	S00, S0, S2
Suitability for use	motor circuit breaker
Protection class IP on the front	IP20
Design of short-circuit protection	fuse
Degree of pollution	3
Insulation voltage rated value	690 V
Insulation voltage with degree of pollution 3 rated value	690 V
Ambient temperature	
• during storage	-50 ... +80 °C
• during operation	-20 ... +60 °C
Equipment marking acc. to DIN 40719 extended according to IEC 204-2 acc. to IEC 750	F
Equipment marking acc. to DIN EN 61346-2	F
Auxiliary circuit	

Number of NC contacts for auxiliary contacts instantaneous contact	0
Number of NO contacts for auxiliary contacts instantaneous contact	0
Number of NO contacts for auxiliary contacts leading contact	0
Number of CO contacts of auxiliary contacts instantaneous contact	0

Control circuit/ Control




Type of voltage of the control supply voltage	AC
Control supply voltage frequency	
<ul style="list-style-type: none"> • 1 <ul style="list-style-type: none"> — Initial rated value — Final rated value 	50 Hz 60 Hz
Control supply voltage	
<ul style="list-style-type: none"> • 1 <ul style="list-style-type: none"> — at AC <ul style="list-style-type: none"> — at 50 Hz Initial rated value — at 50 Hz Final rated value — at 60 Hz Final rated value — at 60 Hz Initial rated value 	210 V 240 V 240 V 210 V



Installation/ mounting/ dimensions



Mounting type	snap-on mounting
Width	18.5 mm
Height	90 mm
Depth	68 mm

Certificates/approvals

Certificate of suitability	CE / UL / CSA
-----------------------------------	---------------

General Product Approval		Declaration of Conformity	Test Certificates		
 CSA	 UL	 EG-Konf.	Type Test Certificates/Test Report	Special Test Certificate	Declaration of the Compliance with the order

Shipping Approval					
 ABS	 BUREAU VERITAS	 LRS	 PRS	 RINA	 RMRS

Shipping Approval	other	Railway		
 DNV-GL	Environmental Confirmations	Confirmation	 VDE	Vibration and Shock

Further information

Information- and Downloadcenter (Catalogs, Brochures,...)

<http://www.siemens.com/industrial-controls/catalogs>

Industry Mall (Online ordering system)

<https://mall.industry.siemens.com/mall/en/en/Catalog/product?mlfb=3RV2902-1DP0>

Cax online generator

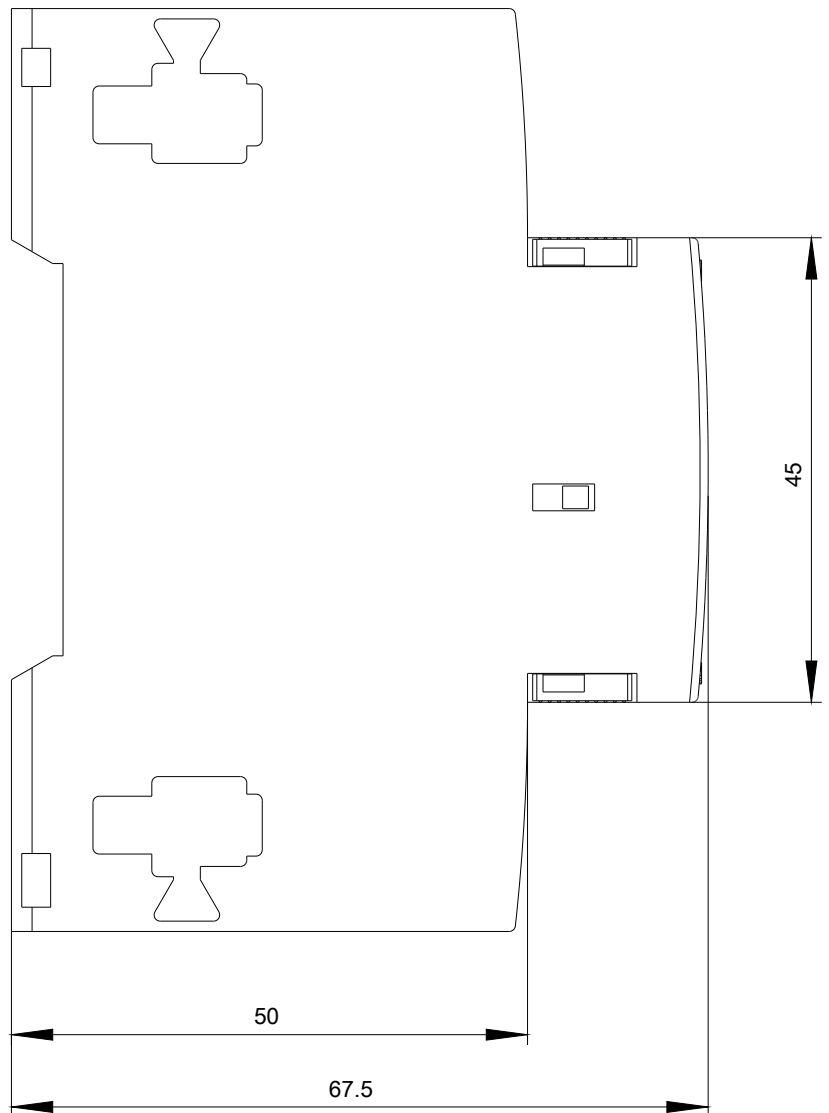
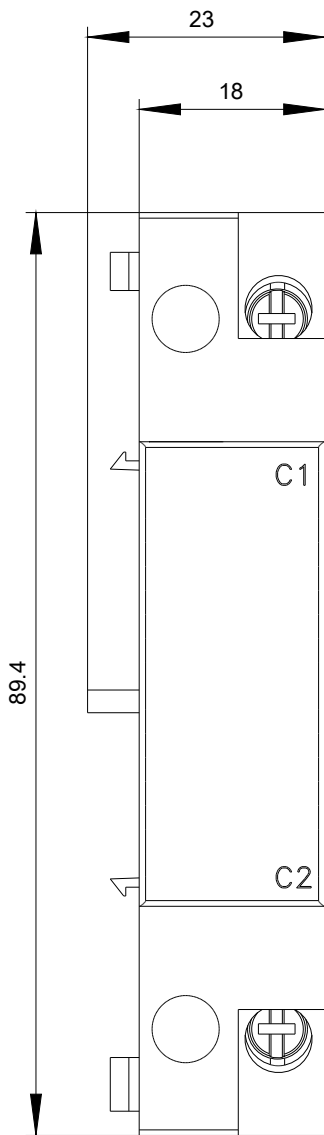
<http://support.automation.siemens.com/WW/CAXorder/default.aspx?lang=en&mlfb=3RV2902-1DP0>

Service&Support (Manuals, Certificates, Characteristics, FAQs,...)

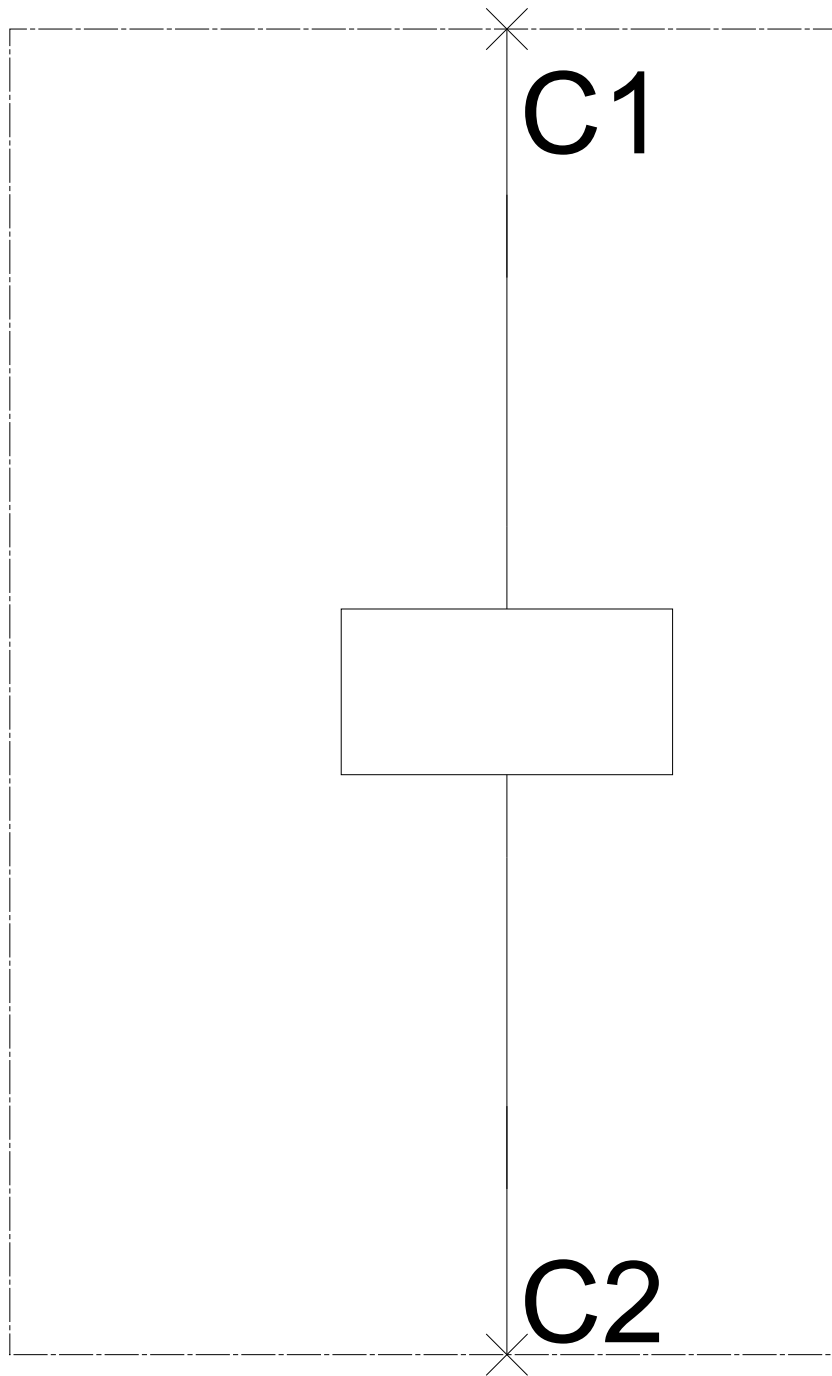
<https://support.industry.siemens.com/cs/ww/en/ps/3RV2902-1DP0>

Image database (product images, 2D dimension drawings, 3D models, device circuit diagrams, EPLAN macros, ...)

http://www.automation.siemens.com/bilddb/cax_de.aspx?mlfb=3RV2902-1DP0&lang=en



-F



last modified:

06/20/2017