



HOLDER FOR STAND-ALONE INSTALL. FOR
3RU11/3RB10 SIZE S00 STAND-ALONE
INSTALLATION MAIN CIRC.: SCREW TERMINAL
AUX.CIRC.: --

General technical data:

product brandname		SIRIUS
Product designation		individual mount
Size of overload relay		S00
Ambient temperature		
• during storage	°C	-50 ... +80
• during operation	°C	-20 ... +70








Installation/ mounting/ dimensions:

Mounting type		screw and snap-on mounting onto 35 mm standard mounting rail
Width	mm	45

Connections/ Terminals:

<ul style="list-style-type: none"> • <ul style="list-style-type: none"> — Type of connectable conductor cross-sections for main contacts finely stranded <ul style="list-style-type: none"> — with core end processing • Type of connectable conductor cross-sections at AWG conductors 		0.5 ... 2.5 mm ²
---	--	-----------------------------

Certificates/ approvals:

General Product Approval		Declaration of Conformity	Test Certificates	Shipping Approval	
			Special Test Certificate		
UL		EG-Konf.		ABS	
Shipping Approval		other			
		Environmental Confirmations	Confirmation		
RINA	RMRS				

Further information

Information- and Downloadcenter (Catalogs, Brochures,...)

<http://www.siemens.com/industrial-controls/catalogs>

Industry Mall (Online ordering system)

<http://www.siemens.com/industrymall>

Cax online generator

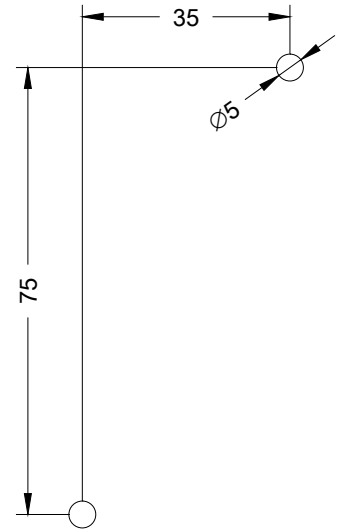
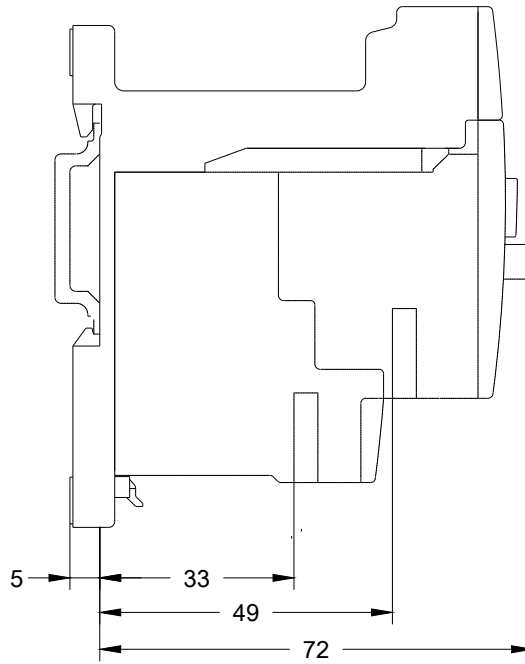
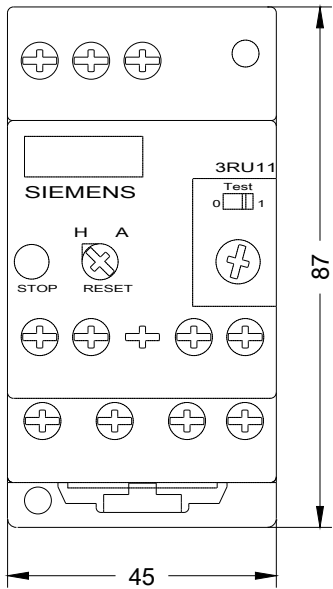
<http://support.automation.siemens.com/WW/CAXorder/default.aspx?lang=en&mlfb=3RU1916-3AA01>

Service&Support (Manuals, Certificates, Characteristics, FAQs,...)

<https://support.industry.siemens.com/cs/ww/en/ps/3RU1916-3AA01>

Image database (product images, 2D dimension drawings, 3D models, device circuit diagrams, EPLAN macros, ...)

http://www.automation.siemens.com/bilddb/cax_de.aspx?mlfb=3RU1916-3AA01&lang=en



last modified:

06/20/2017