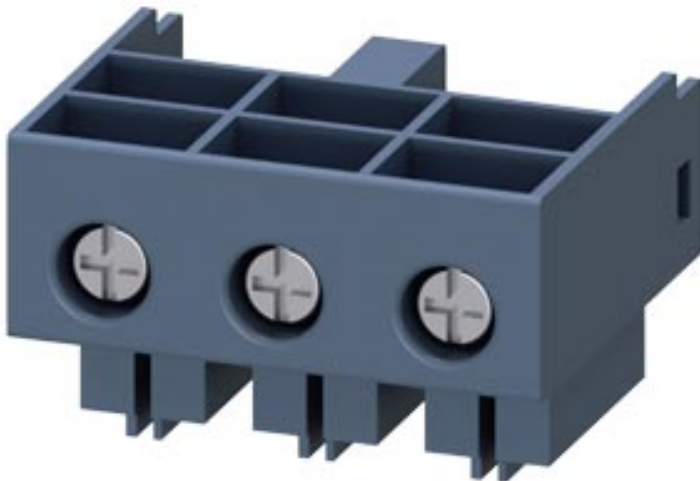


MAIN CIRCUIT TERMINALS (INTEGRATION AND CONNECTION OF MAIN CIRCUIT: SCREW TERMINAL, 2 MAIN CIRCUIT TERMINAL P. PACK









| General technical data:   |    |  |
|---|----|--|
| product brandname   |    | SIRIUS   |
| Product designation   |    | main circuit terminals (ingoing as well as outgoing) |
| Protection class IP   |    | IP20   |
| Relative humidity during operation  | %  | 10 ... 90  |
| Ambient temperature   |    |  |
| • during transport  | °C | -55 ... +80  |
| • during storage  | °C | -55 ... +80  |
| • during operation  | °C | -20 ... +60  |
| Equipment marking acc. to DIN EN 61346-2  |    | X  |
| Equipment marking acc. to DIN 40719 extended according to IEC 204-2 acc. to IEC 750 |    | X  |

| Installation/ mounting/ dimensions: |    |    |
|-------------------------------------|----|----|
| Width                               | mm | 45 |
| Height                              | mm | 32 |
| Depth                               | mm | 30 |

| Connections/ Terminals: |    |    |
|-------------------------|----|----|
| Wire stripping length   | mm | 10 |

|   |     |   |
|---|-----|---|
| <b>Type of electrical connection</b>  |     |   |
| <ul style="list-style-type: none"> <li>• for main current circuit</li> <li>• for auxiliary and control current circuit</li> </ul>   |     | screw-type terminals<br>screw-type terminals  |
| <b>Type of connectable conductor cross-sections</b>   |     |   |
| <ul style="list-style-type: none"> <li>• for main contacts           <ul style="list-style-type: none"> <li>— solid</li> <li>— finely stranded with core end processing</li> </ul> </li> <li>• at AWG conductors for main contacts</li> </ul> |     | up to 12 A: 2x (1.5 ... 2.5 mm <sup>2</sup> ), 2x (2.5 ... 6 mm <sup>2</sup> ), up to 32 A: 2x (2.5 ... 6 mm <sup>2</sup> )<br>up to 12 A: 2x (1.5 ... 2.5 mm <sup>2</sup> ), 2x (2.5 ... 6 mm <sup>2</sup> ) up to 32 A: 2x (2.5 ... 6 mm <sup>2</sup> )<br>up to 12 A: 2x (16 ... 14), 2x (14 ... 10), 1x 8, up to 32 A: 2x (14 ... 10), 1x 8 |
| Design of screw-type connection for auxiliary contacts  |     | M6  |
| Tightening torque for auxiliary contacts with screw-type terminals  | N·m | 2 ... 2.5   |

### Certificates/ approvals:

|  |                    |                                  |                          |  |
|--|--------------------|----------------------------------|--------------------------|--|
| <b>Certificate of suitability</b>  | IEC / EN 60947-6-2 |                                  |                          |  |
| <b>General Product Approval</b>  | <b>EMC</b>         | <b>Declaration of Conformity</b> | <b>Shipping Approval</b> |  |
|  CSA<br> UL<br> EAC<br> C-Tick<br> CE<br> BUREAU VERITAS |                    |                                  |                          |  |

|   |   |
|---|---|
| <b>Shipping Approval</b>  | <b>other</b>                                |
|  DNV<br> LRS<br> PRS<br> RINA<br> RMRS | <a href="#">Environmental Confirmations</a> |

|                              |
|------------------------------|
| <b>other</b>                 |
| <a href="#">Confirmation</a> |

### Further information

**Information- and Downloadcenter (Catalogs, Brochures,...)**

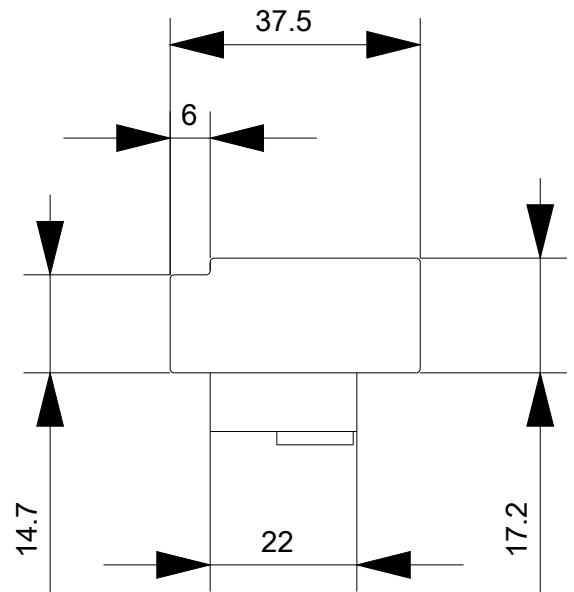
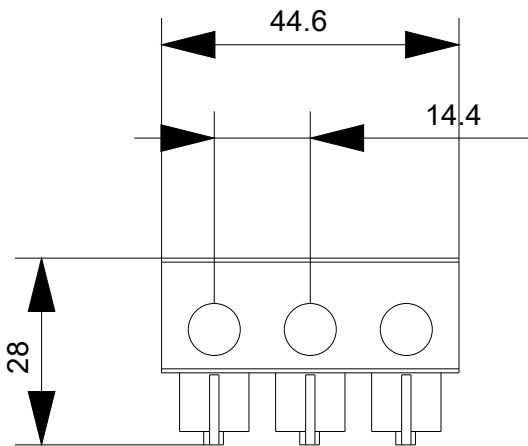
<http://www.siemens.com/industrial-controls/catalogs>

**Industry Mall (Online ordering system)**

<http://www.siemens.com/industrymall>

**Cax online generator**

<http://support.automation.siemens.com/WW/CAXorder/default.aspx?lang=en&mlfb=3RA6920-1A>



last modified:

06/05/2017