



FUSE-SWITCH-DISCONNECTOR I = 100/160A,
U = 500/400V FOR 60MM BUSBAR ADAPTOR FLAT,
BOX TERMINAL AT TOP FUSE SIZE NH000

Similar to image

General technical details:

Continuous current / rated value	A	160
Operating current / at AC-21 / rated value	A	160
Operating voltage		
• for DC / rated value	V	220
• at 50/60 Hz / for AC / rated value	V	690
type of voltage		AC/DC
Number of poles		3
Number of NC contacts / for auxiliary contacts		0
Number of NO contacts / for auxiliary contacts		0
Number of changeover contacts / for auxiliary contacts		0
Acceptability for application		
• emergency stop switch		No
• safety cut-out switch		Yes
Active power loss / maximum	W	5
Breaking capacity limit short-circuit current (I_{cu}) / at 400 V / rated value	kA	0.8
Item designation		
• according to DIN EN 61346-2		Q

- according to DIN 40719 extendable after IEC 204-2 / according to IEC 750

Q

Mechanical design:

Design of the load switch

- Strip form

No

Type of mounting

busbar mounting

Design of the electrical connection

- for main current circuit

box terminals

Fuse system

LV HRC fuse

Center line spacing

mm

60

Width

mm

89

Height

mm

178.5

Depth

mm

119.5

Ambient conditions:

Ambient temperature

- during storage
- during operating

°C

-50 ... +80

°C

-25 ... +55

Protection class IP

IP00

Certificates/approvals:

General Product Approval



CCC



GOST



UL

Test Certificates

[Special Test Certificate](#)

Shipping Approval



GL

other

[Confirmation](#)

[Declaration of Conformity](#)

[other](#)

Further information:

Information- and Downloadcenter (Catalogs, Brochures,...)

<http://www.siemens.com/lowvoltage/catalogs>

Industry Mall (Online ordering system)

<http://www.siemens.com/lowvoltage/mall>

Service&Support (Manuals, Certificates, Characteristics, FAQs,...)

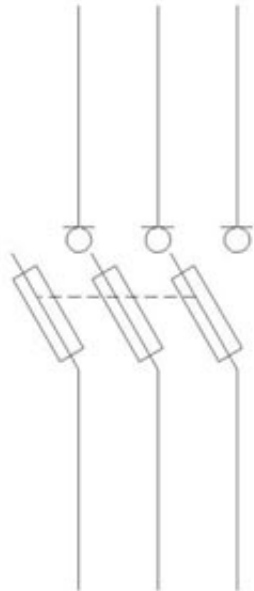
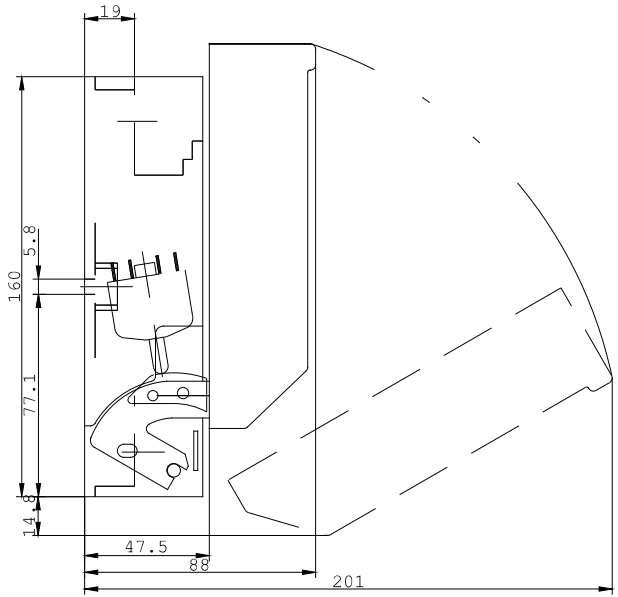
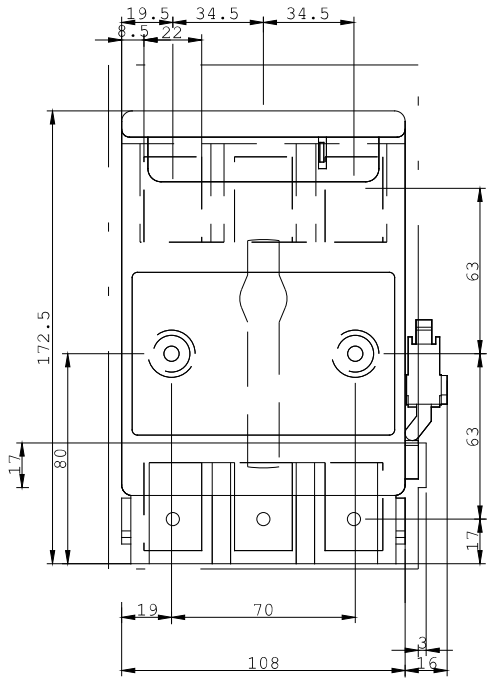
<http://support.automation.siemens.com/WWW/view/en/3NP4016-1CK01/all>

Image database (product images, 2D dimension drawings, 3D models, device circuit diagrams, ...)

http://www.automation.siemens.com/bilddb/cax_en.aspx?mlfb=3NP4016-1CK01

CAX-Online-Generator

<http://www.siemens.com/cax>



last change:

Mar 18, 2013