








LV HRC FUSE BASE, 660V TRIPLE-POLE,  
250A, SIZE 1

Similar to image

### Technical data:

<b>Design type</b>		-
<b>Product component / Retracting-equipment</b>		No
<b>Type of fixing/fixation / Runner Mondays</b>		No
<b>Current / for AC / rated value</b>	A	250
<b>Number of poles</b>		3

### Certificates/approvals:

General Product Approval		Declaration of Conformity		Test Certificates	
 GOST	 KEMA	 UL	 EG-Konf.	<a href="#">Special Test Certificate</a>	<a href="#">Type Test Certificates/Test Report</a>
<b>Shipping Approval</b>	other				
 GL	<a href="#">Environmental Confirmations</a>				

### Further information:

**Information- and Downloadcenter (Catalogs, Brochures,...)**  
<http://www.siemens.com/lowvoltage/catalogs>

Industry Mall (Online ordering system)

<http://www.siemens.com/lowvoltage/mall>

Service&Support (Manuals, Certificates, Characteristics, FAQs,...)

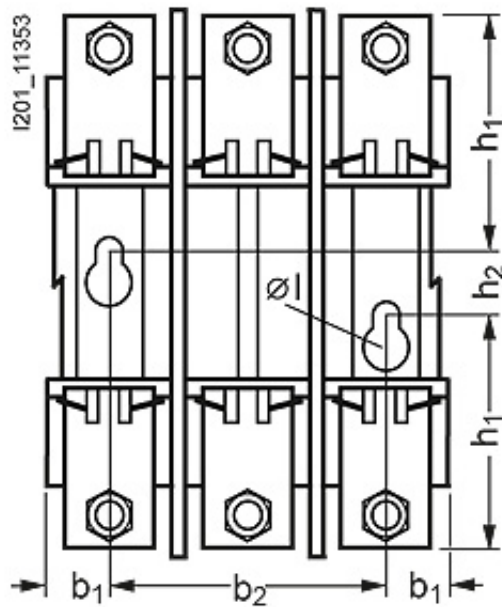
<http://support.automation.siemens.com/WW/view/en/3NH4230/all>

Image database (product images, 2D dimension drawings, 3D models, device circuit diagrams, ...)

[http://www.automation.siemens.com/bilddb/cax\\_en.aspx?mlfb=3NH4230](http://www.automation.siemens.com/bilddb/cax_en.aspx?mlfb=3NH4230)

CAX-Online-Generator

<http://www.siemens.com/cax>



last change:

Mar 4, 2013