



LV HRC FUSE LINK GL/GG WITH NON-INSULATED GRIP LUGS WITH COMBINATION INDICATOR SIZE 1, 80A, AC 500V/DC 440V

Similar to image

Technical data:

| | | |
|---|----|--|
| Current / for AC / rated value | A | 80 |
| Operating class of the fuse link | | gG |
| Size of the fallback-system / acc. to DIN EN 60269-1 | | NH1 |
| Supply voltage | | |
| • for AC / rated value | V | 500 |
| • for DC | V | 440 |
| Switching capacity current | | |
| • in accordance with IEC 60947-2 / rated value | kA | 120 |
| • with DC / in accordance with IEC 60947-2 / rated value | kA | 25 |
| Design of an identification indicator | | Combination alarms |
| type of the assembly | | Non-insulated grip lugs |
| Protection class IP | | IP20, with connected conductors |
| Climatic class | | -20 to +50 at 95% relative humidity |
| Ambient temperature | | |
| • minimum | °C | -5 |
| • maximum | °C | 40 |
| Product description | | Using screw adapter or adapter sleeves |

Certificates/approvals:

General Product Approval

CSA



GOST



KEMA



VDE

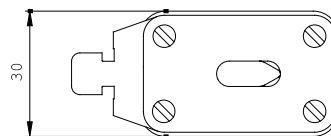
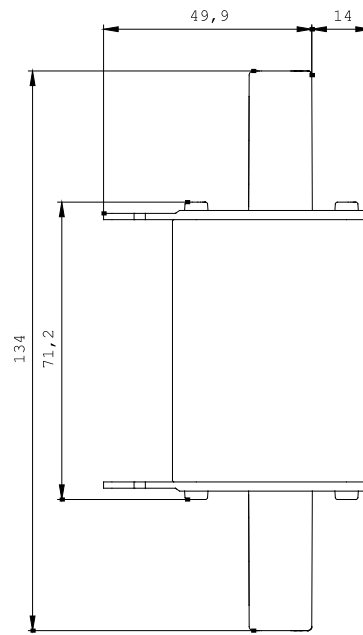


EG-Konf.

Test Certificates[Special Test Certificate](#)[Type Test Certificates/Test Report](#)**Shipping Approval**

GL

Further information:**Information- and Downloadcenter (Catalogs, Brochures,...)**<http://www.siemens.com/lowvoltage/catalogs>**Industry Mall (Online ordering system)**<http://www.siemens.com/lowvoltage/mall>**Service&Support (Manuals, Certificates, Characteristics, FAQs,...)**<http://support.automation.siemens.com/WW/view/en/3NA7124/all>**Image database (product images, 2D dimension drawings, 3D models, device circuit diagrams, ...)**http://www.automation.siemens.com/bilddb/cax_en.aspx?mlfb=3NA7124**CAX-Online-Generator**<http://www.siemens.com/cax>**Tender specifications**[Datenorm](#) [GAEB81](#) [GAEB83](#) [RTF](#) [TXT](#)



last change:

Mar 18, 2013