

# CATania 6075 luminaire profile

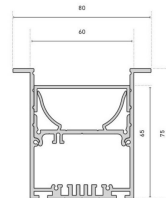
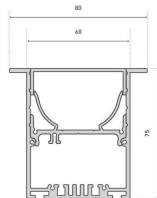
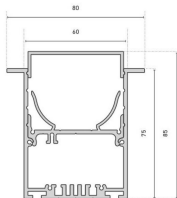
- high quality luminaire aluminium profile, anodised
- flexibly useable as recessed or luminaire profile
- integrateable power supply 66000315
- the cover can be installed in 3 levels (shielded, flush or 180°)
- increased light output through white powder coated reflector integrated in the profile insert
- in combination with an opal white cover and compatible LEDlight flex, a homogenous light distribution can be achieved
- RAL powder coating on request



Please refer to the notes on expansion and assembly at the end of the data sheet!

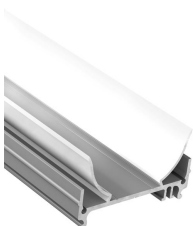
## ALUMINIUM PROFILE

	62398891	62398892	62398893	62398895
Length	1000 mm	2010 mm	3020 mm	5030 mm
Width	80 mm			
Height	75 mm			
Material	Aluminium 6063			
Finish	anodised			
Weight	1450 gr	2900 gr	4350 gr	7250 gr



## INLAY

	62398871	62398872	62398873	62398875
Description	CATania 60 insert profile, aluminium, anodised, for installation of LED strips of the LEDlight flex series or PCBs according to Zhaga class L28W2 and L56W2; white powder coated reflective surface for increased luminous efficiency			
Length	1000 mm	2010 mm	3020 mm	5030 mm
Width	57,2 mm			
Height	31,6 mm			
Weight	660 gr	1320 gr	1980 gr	3300 gr



## COVER

	62398911	62398921	62398931
<b>Description</b>	for the protection of the LED stripe	low light dissipation and hiding technical view at the same time	for a homogenous and antiglare light distribution
<b>Material</b>	PMMA		
<b>Length</b>	1000 mm		
<b>Width</b>	55,8 mm		
<b>Height</b>	15 mm		
<b>Weight</b>	156 gr	147 gr	149 gr

For other lengths please replace the last digit of the article number by: 2 = 2.01m / 3 = 3.02m / 5 = 5.03m



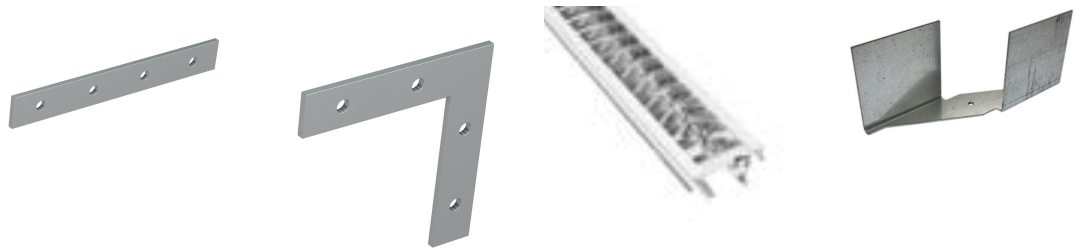
## END CAPS

	62398896	62398916
<b>Description</b>	2x end caps, incl. 8 screws, thickness: 12 mm (incl. wings, without earthing screw)	2x end cap, opal for cover in 180° position, thickness (excl. holding pins): 2mm
<b>Material</b>	Aluminium	Plastics
<b>Length</b>	12 mm	2 mm
<b>Width</b>	80 mm	55,8 mm
<b>Height</b>	75 mm	11,9 mm
<b>Weight</b>	61 gr	3 gr

## ACCESSORIES

	62398802	62398803	62398897
<b>Description</b>	2x straight connectors, metal, incl. 8 grub screws	2x connectors, 90° angle, metal, incl. 8 grub screws	2x holding brackets, incl. 2 screws
<b>Length</b>	80 mm	50,5 mm	160 mm
<b>Width</b>	10,5 mm	50,5 mm	64 mm
<b>Height</b>	1,7 mm		67 mm
<b>Weight</b>	28 gr	31 gr	280 gr

	62398878
<b>Description</b>	micro louvre for glare-free lighting of LED luminaires, louvre length: 50 cm, can be arranged next to each other
<b>Material</b>	Aluminium
<b>Length</b>	500 mm
<b>Width</b>	55,3 mm
<b>Height</b>	31,5 mm
<b>Weight</b>	90 gr
<b>Remarks</b>	Surface: diffuse, finely structured, pre-anodized, ultra-reflective reinforced In combination with LEDlight flex strips with a lumen output of $\leq 2.000\text{lm/m}$ a UGR <19 is achieved (both transverse and longitudinal direction). In conjunction with the end caps 62398868 (screwless visible surface), it must be ensured that the aluminium profile is 5 mm longer than the sum of the parabolic louvres used. With the standard end caps 62398866, the length of the aluminium profile and the parabolic louvre may be the same.



Alle Aluminiumprofile und Abdeckungen unterliegen gewissen Längentoleranzen. Diese beträgt unabhängig von der Länge +20/-0 mm, d. h. ein Profil hat min. die angegebene Länge, kann aber bis zu 20 mm länger sein.

Benötigen Sie eine exakte Länge, geben Sie dies bitte bei der Bestellung an (über Artikelnummer 62397000).

Please note that the materials aluminum and PMMA can expand when the temperature changes vary greatly. With a temperature change of 20°C the expansion difference can be up to 1.2 mm per meter! This is no deficiency of the product but a normal physical process.

Installation note: If you directly install two aluminum profiles edge to edge (without end caps), please pay attention during installation, that you don't glue the LED strip directly over the joint, since the profiles at temperature fluctuations - especially at large lengths - will expand/contract (s. section 1) and then the LED tape may be damaged. At joints the LED strip has to be cut at the marked positions and reconnected with flexible solder bridges with corresponding expansion reserve (min. 5mm).