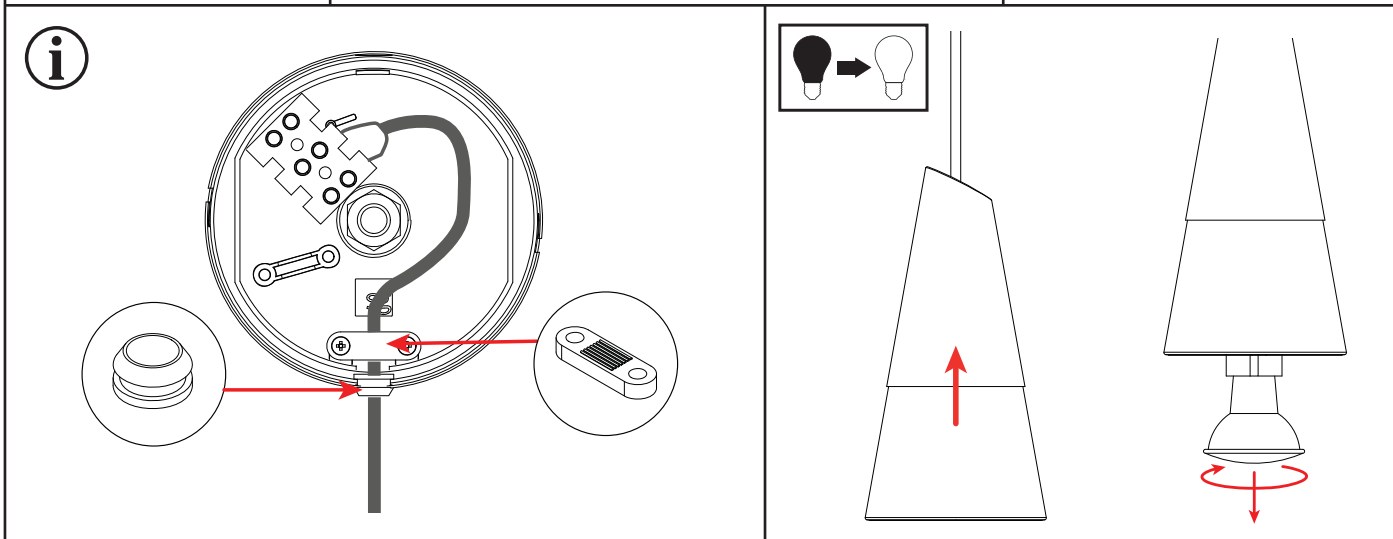
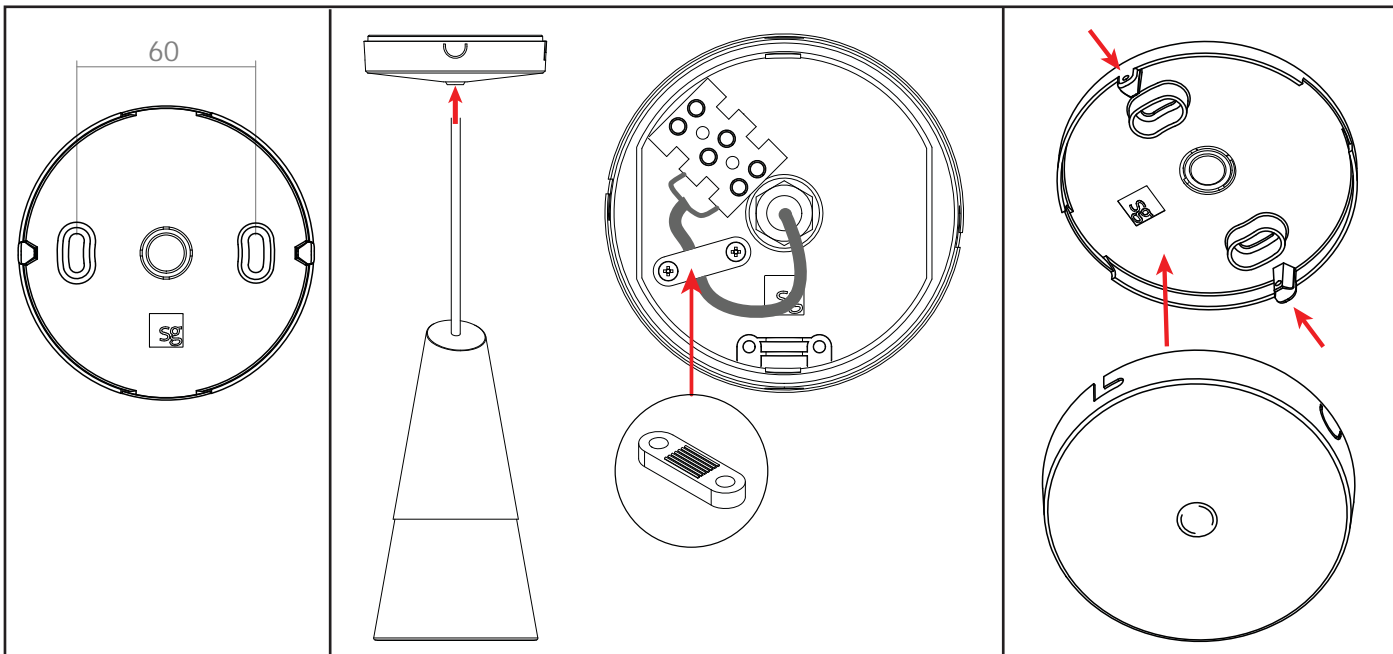

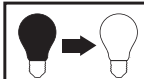



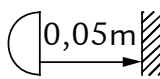
Iris



230V, 50/60Hz, GU10 max 6.5W LED.



  → 

 0,05m

NO: Minimumsavstand til brennbart materiale i armaturens stråleretning.
 EN: Minimum distance to flammable material in the beam direction.
 FR: Distance minimum entre le faisceau lumineux de l'armature et toute matière inflammable.
 NL: Minimale afstand tussen de lichtstraal van de armatuur en het brandbaar materiaal.
 DE: Der kleinste Abstand zum brennbaren Material in die Richtung des Lichtstrahls.

Rev. 8.11.2013

SG Armaturen AS
 Svåbekk 15
 N-4790 Lillesand
 NORGE
 Tel: +47 37 500 300
 www.sg-as.no

SG Armaturen AB
 August Barksg. 30B
 SE-421 32 Västra Frölunda
 SVERIGE
 Tel: +46 31 81 71 10
 www.sg-ab.se

SG Lighting SA/NV
 Wayenborgstraat 4
 B-2800 Mechelen Noord II
 BELGIQUE/BELGIË
 Tel: +32 (0) 15 20 72 71
 www.sglighting.net

SG Lighting SA/NV
 Parc de l'Arboretum
 73 rue de Saint Mandrier
 83140 Six Fours Les Plages
 FRANCE
 Tel: +33 04 94 93 00 00
 www.sglighting.net

SG Leuchten GmbH
 Nordstrasse 53
 D-59399 Olfen
 DEUTSCHLAND
 Tel: 0152-57000500
 www.sg-leuchten.de