

NON INSULATED TERMINALS AND SPLICES FROM 0.3 TO 1000 MM² ACCORDING TO IEC-61238
 COSSES ET MANCHONS NUS DE 0.3 A 1000 MM² CONFORMES CEI-61238



Construction

- 99.9 % Electrolytic Cu tube.
- Electro tinned.

Performance

- Heat resistant up to +125 °C.

Construction

- Tube en cuivre électrolytique à 99.9 %.
- Etamage électrolytique.

Performance

- Température de travail jusqu'à +125°C.

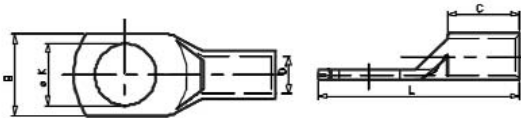
Non insulated terminals from 0.3 to 1000 mm² - Cosses nues de 0.3 à 1000 mm²



- Add "90" or "45" at the end of the Part Number for 90° or 45° bended tongue
- All YAV_M items can be supplied with undrilled.
- Inspection hole.
- YAV terminals also available with approved.
- Add "UL" at the end of the part number.

- Rajouter le suffixe "90" ou "45" à la référence pour cosses coudées à 90° ou 45°.
- La série YAV_M peut être fournie non bornée.
- Orifice de control.
- Cosses YAV aussi disponibles avec certification , ajouter "UL" a la référence.

Dimensions/Dimensions



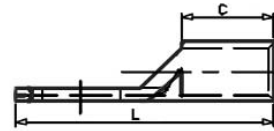
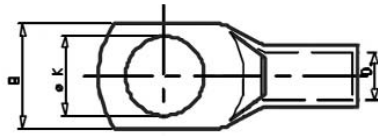
Section Section (mm ²)	Stud hole Bornes M	Part number Référence	Dimensions/Dimensions (mm)					Mechanical tooling Outillage manuel	Hydraulic tooling/Outillage hydraulique					
			ØK	B	ØD	C	L		Y500CT EDW570	Y35/Y39 PAT750XT	Y644HS PAT644XT	Y46	Y60BHU	
0.3-1.2	3	YAV18T4	3.1	4.8			13.7	Y10R4BY9 MR89Q						
	3.5	YAV18T5	3.7	8.0	1.4	15.5								
	4	YAV18T1	4.3	8.0	15.5									
	5	YAV18	5.1	8.0	15.5									
1.5-2.5	3.5	YAV025M35	3.7	6.4			13.7							
	4	YAV025M4	4.3	8.0			16.3							
	5	YAV025M5	5.3	8.0	2.3	6.9	16.3							
	6	YAV025M6	6.4	10.7	19.1									
2.5-4	8	YAV14T3	8.4	11.2			19.1							
	4	YAV04M4	4.3	6.9			15.2							
	5	YAV04M5	5.3	7.6	2.6		17.0							
	6	YAV04M6	6.4	9.1	19.8									
4-6	3.5	YAV06M35	3.7	7.6			19.8							
	4	YAV06M4	4.3	9.6			20.1							
	5	YAV06M5	5.3	9.6	3.3	9.5	20.1							
	6	YAV06M6	6.4	12.0	22.1									
Flex 6	8	YAV06M8	8.4	13.5			22.1							
	10	YAV10T38	10.5	14.7			22.9							
	4	YAV06FM4	4.3	8.0			18.1							
	5	YAV06FM5	5.3	9.7			19.1							
10	6	YAV06FM6	6.4	11.0	3.8	9.9	20.1							
	8	YAV06FM8	8.4	13.0	22.1									
	10	YAV06FM10	10.5	14.0	24.1									
	4	YAV10M4	4.3	10.3			19.4							
16	5	YAV10M5	5.3	10.3			20.1							
	6	YAV10M6	6.4	11.1	4.6	12	21.4							
	8	YAV10M8	8.4	14.3	23.4									
	10	YAV10M10	10.5	14.3	25.4									
25	12	YAV10M12	12.3	18.5	28.4									
	5	YAV16M5	5.3	12.7			22.9							
	6	YAV16M6	6.4	12.7			23.9							
	8	YAV16M8	8.4	15.0	5.7	14	25.9							
25	10	YAV16M10	10.5	15.0	27.9									
	12	YAV16M12	13.2	18.5	30.9									
	5	YAV25M5	5.3	13.9			24.7							
	6	YAV25M6	6.4	13.9			25.7							
25	8	YAV25M8	8.4	15.9	7.2	15	27.7							
	10	YAV25M10	10.5	15.9	29.7									
	12	YAV25M12	13.2	18.5	32.7									

Note: YAV terminals also available with approved. Add "UL" at the end of the part number.

Note: Cosses YAV aussi disponibles avec certification , ajouter "UL" a la référence.

NON INSULATED TERMINALS AND SPLICES FROM 0.3 TO 1000 MM² ACCORDING TO IEC-61238
 COSSES ET MANCHONS NUS DE 0.3 A 1000 MM² CONFORMES CEI-61238

Dimensions/Dimensions



Section Section (mm ²)	Stud hole Bornes M	Part number Référence	Dimensions/Dimensions (mm)					Mechanical tooling Outillage manuel	Hydraulic tooling/Outillage hydraulique							
			ØK	B	ØD	C	L		Y500CT EDW570	Y35/Y39 PAT750XT	Y644HS PAT644XT	Y46	Y60BHU			
35	5	YAV35M5	5.3	16.4	8.5	17.0	27.4	MY70M MY2913GE2 MRD26T1	W35C	W036BGE1T	U35C	Y35P1POS	U035BGE1T			
	6	YAV35M6	6.4	16.4												28.4
	8	YAV35M8	8.4	16.4												30.4
	10	YAV35M10	10.5	16.4												32.4
	12	YAV35M12	13.2	19.8												35.4
50	5	YAV50M5	5.3	18.2	9.5	20.0	30.9	MY70M MY2913GE2	W50C	W050BGE1T	U50C	Y35P1POS	U050BGE1T			
	6	YAV50M6	6.4	18.2												31.9
	8	YAV50M8	8.4	18.2												33.9
	10	YAV50M10	10.5	18.2												35.9
	12	YAV50M12	13.2	19.8												38.9
	14	YAV50M14	15.0	21.5												38.9
	16	YAV50M16	17.0	22.4												41.9
Flex 50	5	YAV50FM5	5.3	19.5	10.0	20.0	30.9	MY70M MY2913GE2	W50FC	W050BGE1T	U50FC	Y35P1POS	U050BGE1T			
	6	YAV50FM6	6.4	19.5												31.9
	8	YAV50FM8	8.4	19.5												33.9
	10	YAV50FM10	10.5	19.5												35.9
	12	YAV50FM12	13.2	21.8												38.9
70	5	YAV70M5	5.3	21.4	11.3	21.0	32.4	MY70M MY2913GE2	W70C	W070BGE1T	U70C	Y35P1POS	U070BGE1T			
	6	YAV70M6	6.4	21.4												33.4
	8	YAV70M8	8.4	21.4												35.4
	10	YAV70M10	10.5	21.4												37.4
	12	YAV70M12	13.2	22.4												40.4
	14	YAV70M14	15.0	22.4												40.4
Flex 70	5	YAV70FM5	5.3	23.8	12.8	20.0	37.4	MY70M MY2913GE2	W70FC	W070BGE1T	U70FC	Y35P1POS	U070BGE1T			
	6	YAV70FM6	6.4	23.8												38.4
	8	YAV70FM8	8.4	23.8												40.4
	10	YAV70FM10	10.5	23.8												42.4
	12	YAV70FM12	13.2	23.8												45.4
	14	YAV70FM14	15.0	23.8												45.4
95	8	YAV95M8	8.4	27.0	13.4	25.0	41.4	MY2913GE2	W95C	W095BGE1T	U95C	Y35P1POS	U095BGE1T			
	10	YAV95M10	10.5	27.0												43.4
	12	YAV95M12	13.2	27.0												46.4
	14	YAV95M14	15.0	27.0												46.4
	16	YAV95M16	17.0	27.0												49.4
Flex 95	8	YAV95FM8	8.4	25.0	14.2	20.0	41.4	MY2913GE2	W95FC	W095BGE1T	U95FC	Y35P1POS	U095BGE1T			
	10	YAV95FM10	10.5	25.0												43.4
	12	YAV95FM12	13.2	25.0												46.4
	14	YAV95FM14	15.0	25.0												46.4
	16	YAV95FM16	17.0	25.0												49.4
120	8	YAV120M8	8.4	29.0	15.0	27.0	44.4	MY2913GE2	W120C	W120BGE1T	U120C	Y35P1POS	U120BGE1T			
	10	YAV120M10	10.5	29.0												46.4
	12	YAV120M12	13.2	29.0												49.4
	14	YAV120M14	15.0	29.0												49.4
	16	YAV120M16	17.0	29.0												52.4
	20	YAV120M20	21.0	31.7												58.4
Flex 120	8	YAV120FM8	8.4	29.0	15.9	27.0	44.4	MY2913GE2	W120FC	W120BGE1T	U120FC	Y35P1POS	U120BGE1T			
	10	YAV120FM10	10.5	29.0												46.4
	12	YAV120FM12	13.2	29.0												49.4
	14	YAV120FM14	15.0	29.0												49.4
	16	YAV120FM16	17.0	29.0												52.4
150	10	YAV150M10	10.5	30.4	16.5	28.6	52.3	MY2913GE2	W150C	W150BGE1T	U150C	Y35P1POS	U150BGE1T			
	12	YAV150M12	13.2	30.4												55.3
	14	YAV150M14	15.0	30.4												55.3
	16	YAV150M16	17.0	30.4												58.3
	20	YAV150M20	21.0	30.4												64.3
Flex 150	10	YAV150FM10	10.5	32.8	17.8	28.6	53.9	MY2913GE2	W150FC	W150BGE1T	U150FC	Y35P1POS	U150BGE1T			
	12	YAV150FM12	13.2	32.8												56.9
	14	YAV150FM14	15.0	32.8												56.9
	16	YAV150FM16	17.0	32.8												59.9
	20	YAV150FM20	21.0	32.8												65.9

DIELESS
SANS MATRICES

U DIES WITH PUADP1 ADAPTOR
MATRICES *U* AVEC ADAPTATUR PUADP1

L30RT

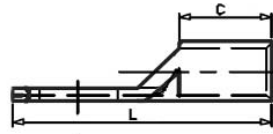
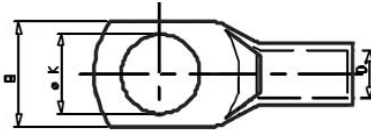
L31RT

Note: YAV terminals also available with approved. Add *UL* at the end of the part number.

Note: Cosses YAV aussi disponibles avec certification , ajouter *UL* a la référence.

NON INSULATED TERMINALS AND SPLICES FROM 0.3 TO 1000 MM² ACCORDING TO IEC-61238
 COSSES ET MANCHONS NUS DE 0.3 A 1000 MM² CONFORMES CEI-61238

Dimensions/Dimensions



Section Section (mm ²)	Stud hole Bornes M	Part number Référence	Dimensions/Dimensions (mm)					Mechanical tooling Outillage manuel	Hydraulic tooling/Outillage hydraulique				Y60BHU	
			ØK	B	ØD	C	L		Y500CT EDW570	Y35/Y39 PAT750XT	Y644HS PAT644XT	Y46		
185	10	YAV185M10	10.5	35.7			61.8	W185C	W185C	W185BGEIT	U185C	U185BGEIT		L31RT
	12	YAV185M12	13.2	35.7		64.8								
	14	YAV185M14	15.0	35.7	18.4	64.8								
	16	YAV185M16	17.0	35.7		67.8								
Flex 185	20	YAV185M20	21.0	35.7		73.8	W185FC	W185FC	W185BGEIT	U185FC	U185BGEIT		L32RT	
	10	YAV185FM10	10.5	35.7		61.8								
	12	YAV185FM12	13.2	35.7	19.4	64.8								
	14	YAV185FM14	15.0	35.7		64.8								
240	16	YAV185FM16	17.0	35.7		67.8	W185FC	W185FC	W185BGEIT	U185FC	U185BGEIT		L34RT	
	20	YAV185FM20	21.0	35.7		73.8								
	10	YAV240M10	10.5	39.6		68.2								
	12	YAV240M12	13.2	39.6		71.2								
Flex 240	14	YAV240M14	15.0	39.6	21.2	71.2	W34VT**	W34VT**	U240C	U240C	Y35P1PQ7S		L34RT	
	16	YAV240M16	17.0	39.6		74.2								
	20	YAV240M20	21.0	39.6		80.2								
	10	YAV240FM10	10.5	41.0		73.4								
300	12	YAV240FM12	13.2	41.0		76.4	W34RT***	W34RT***	U240FC	U240FC	U240FBGEIT		L36RT	
	14	YAV240FM14	15.0	41.0	22.0	76.4								
	16	YAV240FM16	17.0	41.0		79.4								
	20	YAV240FM20	21.0	41.0		85.4								
Flex 300	12	YAV300M12	13.2	43.0		77.3	W36RT***	W36RT***	U300C	U300C	U300FBGEIT		L38RT	
	14	YAV300M14	15.0	43.0	23.4	78.3								
	16	YAV300M16	17.0	43.0		80.3								
	20	YAV300M20	21.0	43.0		86.3								
350	12	YAV300FM12	13.2	45.0		81.4	W36RT***	W36RT***	U300C	U300C	U300FBGEIT		L39RT	
	14	YAV300FM14	15.0	45.0	24.2	82.4								
	16	YAV300FM16	17.0	45.0		84.4								
	20	YAV300FM20	21.0	45.0		90.4								
375	12	YAV350M12	13.2	46.0		77.3	W36RT***	W36RT***	U300C	U300C	U300FBGEIT		L40RT	
	16	YAV350M16	17.0	46.0	25.0	80.3								
	20	YAV350M20	21.0	46.0		86.3								
	12	YAV375M12	13.2	48.0		81.3								
400	16	YAV375M16	17.0	48.0	26.2	84.3	W36RT***	W36RT***	U300C	U300C	U300FBGEIT		L44RT	
	20	YAV375M20	21.0	48.0		90.3								
	12	YAV400M12	13.2	49.5		81.3								
	14	YAV400M14	15.0	49.5	26.7	82.3								
Flex 400	16	YAV400M16	17.0	49.5		84.3	W36RT***	W36RT***	U300C	U300C	U300FBGEIT		L45RT	
	20	YAV400M20	21.0	49.5		90.3								
	12	YAV400FM12	13.2	51.0		83.6								
	14	YAV400FM14	15.0	51.0	27.2	84.6								
500	16	YAV400FM16	17.0	51.0		86.6	W36RT***	W36RT***	U300C	U300C	U300FBGEIT		L46RT	
	20	YAV400FM20	21.0	51.0		92.6								
	12	YAV500M12	13.2	55.1		87.8								
	14	YAV500M14	15.0	55.1	29.8	88.8								
630	16	YAV500M16	17.0	55.1		90.8	W36RT***	W36RT***	U300C	U300C	U300FBGEIT		L47RT	
	20	YAV500M20	21.0	55.1		86.8								
	16	YAV630M16	17.0	61.8	33.4	96.7								
	20	YAV630M20	21.0	61.8		102.7								
Flex 630	22	YAV630FM20	21.0	63.0	34.3	104.6	W36RT***	W36RT***	U300C	U300C	U300FBGEIT		L48RT	
	22	YAV630FM22	23.8	63.0		106.6								
800	20	YAV800M20*	21.0	67.5	36.6	113.6								
Flex 800	20	YA47L*	21.0	67.5	39.6	116.4								
1000	20	YA48L*	21.0	77.7	42.2	127.2								

* Other stud holes or undrilled palms on demand.

** Romboide crimping.

***Circunferential crimping.

Y39 takes "U" dies with UADP1 adaptor.

* Autre bornage ou non borné sur demande.

** Sertissage losange.

***Sertissage circunferential.

Y39 accepte les matrices de type "U" avec l'adaptateur UADP1.

Note: YAV terminals also available with approved.
 Add "UL" at the end of the part number.

Note: Cosses YAV aussi disponibles avec certification , ajouter "UL" a la référence.