

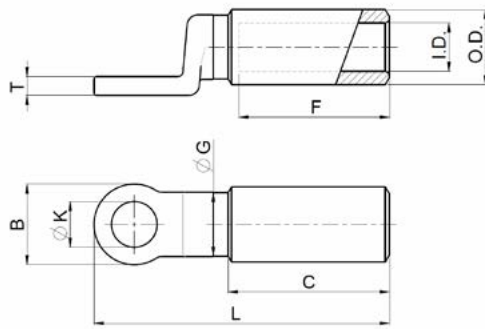
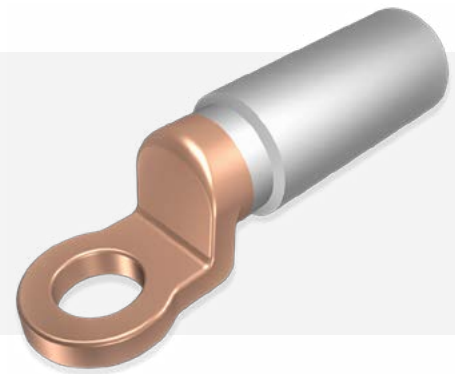
# BIMETALLIC TERMINAL - TERMINAL BIMETÁLICO

# Y4A\_A\_C

Bimetallic terminals by welding. According to NFC33-090-1  
 Terminales bimetalicos por soldadura. Según norma NFC33-090-1

## Description Descripción

- Al barrel and Cu palm friction welded.
- Filled with neutral contact grease and with plastic cap.
- Crimping with deep indent.
- *Cañón de Al y pala de Cu soldados por fricción.*
- *Relleno con grasa de contacto neutra y con tapón de plástico.*
- *Compresión por punzonado profundo.*



## Construction Construcción

Barrel: Al 99.5 %. *Cañón: Al 99.5%.*  
 Palm: Cu 99.9 %. *Pala: Cu 99.9%.*

## Application Aplicación

L.V. and M.V. underground distribution  
*Distribución subterránea de B.T. y M.T.*

## Standard Norma

NFC33-090-1 *NFC33-090-1*

## Compression Compresión

Deep Indent *Punzonado Profundo*

| SECTION<br>SECCIÓN (mm <sup>2</sup> ) | STUD<br>BORNA | PART NUMBER<br>REFERENCIA | DIMENSIONS DIMENSIONES (mm) |      |      |    |      |      |      |     |     |        | TOOL<br>HERRAMIENTA | PACKING<br>EMBALAJE |
|---------------------------------------|---------------|---------------------------|-----------------------------|------|------|----|------|------|------|-----|-----|--------|---------------------|---------------------|
|                                       |               |                           | I.D.                        | O.D. | ØK   | B  | C    | F    | ØG   | T   | L   |        |                     |                     |
| 16                                    | M10           | Y4A16A105C                | 5.5                         | 16   | 10.5 | 20 | 48.0 | 41.5 | 12   | 4.5 | 83  | 120 kN | 25                  |                     |
| 25                                    | M10           | Y4A25A105C                | 6.5                         | 16   | 10.5 | 20 | 48.0 | 41.5 | 12   | 4.5 | 83  |        |                     |                     |
| 25                                    | M12           | Y4A25A128C                | 6.5                         | 16   | 12.8 | 20 | 48.0 | 41.5 | 12   | 4.5 | 83  |        |                     |                     |
| 35                                    | M12           | Y4A35A128C                | 8.0                         | 16   | 12.8 | 25 | 48.0 | 41.5 | 12   | 5.0 | 89  |        |                     |                     |
| 50                                    | M12           | Y4A50A128C                | 9.0                         | 20   | 12.8 | 25 | 47.0 | 41.5 | 14.8 | 5.0 | 89  |        |                     |                     |
| 70                                    | M12           | Y4A70A128C                | 11.0                        | 20   | 12.8 | 25 | 47.0 | 41.5 | 14.8 | 5.0 | 89  |        |                     |                     |
| 95                                    | M12           | Y4A95A128C                | 12.5                        | 20   | 12.8 | 25 | 47.0 | 41.5 | 14.8 | 5.0 | 89  |        |                     |                     |
| 120                                   | M12           | Y4A120A128C               | 13.7                        | 25   | 12.8 | 30 | 63.5 | 57.0 | 18.8 | 6.0 | 112 |        |                     |                     |
| 150                                   | M12           | Y4A150A128C               | 15.5                        | 25   | 12.8 | 30 | 63.5 | 57.0 | 18.8 | 6.0 | 112 |        |                     |                     |
| 185                                   | M12           | Y4A185A128C               | 17.0                        | 32   | 12.8 | 30 | 63.0 | 57.0 | 23.8 | 6.0 | 114 |        |                     |                     |
| 240                                   | M12           | Y4A240A128C               | 19.5                        | 32   | 12.8 | 30 | 63.0 | 57.0 | 23.8 | 6.0 | 114 |        |                     |                     |
| 300                                   | M16           | Y4A300A34165C             | 23.3                        | 34   | 16.5 | 36 | 72.0 | 65.0 | 28.0 | 7.0 | 130 | 200kN  | 10                  |                     |
| 300                                   | M12           | Y4A300A165C               | 23.3                        | 40   | 16.5 | 36 | 99.0 | 91.0 | 28.0 | 7.0 | 156 |        |                     |                     |
| 400                                   | M16           | Y4A400A165C               | 26.0                        | 40   | 16.5 | 36 | 99.0 | 91.0 | 28.0 | 7.0 | 156 |        |                     |                     |



SECTION (mm<sup>2</sup>)  
SECCIÓN (mm<sup>2</sup>)



STUD  
BORNA



DEEP INDENT  
PUNZONADO PROFUNDO



PACKING  
EMBALAJE

Unless otherwise stated, all dimensions are in millimeters.  
 Sino se indica lo contrario, todas las dimensiones están en milímetros.