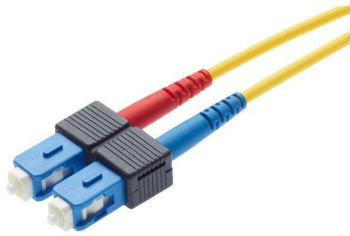


# Patch cord FO G657A SCD/SCD 1,5m



090.5600 / similar product

## TECHNICAL DATA

DESCRIPTION	VALUE/VALUE RANGE
Protection class IP	IP 20
Connector class	connector
Protection class IP (A)	IP 20
Number of connectors (A)	2
Protection class IP (B)	IP 20
Number of connectors (B)	2
Cable type	Patch cord (duplex), polarity A-B
Jacket material	LSZH
Cable jacket characteristics	Kabel metallfrei halogenfrei falmmwidrig
Cable overall diameter	2.7 x 5.4 mm
Connector type (A)	SC-Duplex
Polishing plug (A)	PC
Attenuation grade IL (A)	C
Return loss grade RL (A)	2
Connector color (A)	blue
Lever- / frame-coding (A)	Color
Connector type (B)	SC-Duplex
Polishing plug (B)	PC
Attenuation grade IL (B)	C
Return loss grade RL (B)	2
Lever- / frame-coding (B)	Color
Lever color (B)	black
Fiber type	singlemode (SM)

**DESCRIPTION****VALUE/VALUE RANGE**

Fiber diameter	E9 / 125 µm
----------------	-------------

**MECHANICAL DATA****DESCRIPTION****VALUE/VALUE RANGE**

Cable length	1.5 m / 4 ft 11 in
--------------	--------------------

Color	yellow
-------	--------