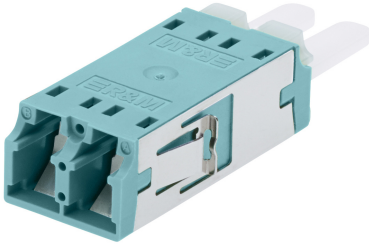


Adapter LC-Duplex PC, turquoise, ceramic MM, M, flangeless

12 pcs



DESCRIPTION

LC-Duplex adapter flangeless with semi-transparent dust caps. Quick mounting clip integrated.

090.7455

TECHNICAL DATA

DESCRIPTION	VALUE/VALUE RANGE
Standard / norm	UL Listed according to IEC 61754-20
Connector class	adapter
Protection class IP (A)	IP 20
Connector type (A)	LC-Duplex
Polishing plug (A)	PC
Attenuation grade IL (A)	M
Connector color (A)	turquoise/aqua
Sleeve material	ceramic
Adapter fastening method	end cap snap-in
Fiber type	multimode (MM)

MECHANICAL DATA

DESCRIPTION	VALUE/VALUE RANGE
Dimensions	55.0 mm x 15.5 mm x 9.35 mm / 2.165 in x 0.61 in x 0.368 in (W x H x D)
Material	steel: X10CrNi18-8 (1.4310) / plastic: PBT, fiber-glass reinforced (halogen-free)

LC-Duplex multimode adapter in acc. with IEC 61754-20. Flangeless body and integrated quick-mounting clip, color metallic, material X10CrNi18-8. Housing turquoise (multimode PC), material PBT / UL 94 V-0, zirconia (ceramic) alignment sleeve, integral self-closing metal laser protection flaps, semi-transparent plastic dust covers, allowing optical testing with test lasers without removing the covers. The adapter qualified in acc. with IEC 61753-1 for category U (uncontrolled environment).

Optical specifications:

- Delta insertion loss: ≤ 0.2 dB, testing method acc. to IEC 61300-3-4

Mechanical specifications:

Adapter LC-Duplex PC, turquoise, ceramic MM, M, flangeless

12 pcs



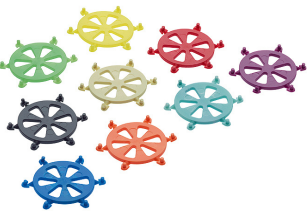

- Mating cycles: min. 500
 - Pull-out force: min. 70 N
- Optional:
Visual coding, mechanical coding and lock protection.

OPTIONAL ACCESSORY

FOTO	DESCRIPTION	PU	PRODUCT NO.
	Color Coding LC-Duplex Adapter, green	1 pcs	R820806
	Color Coding LC-Duplex Adapter, blue	1 pcs	R820807
	Color Coding LC-Duplex Adapter, turquoise	1 pcs	R820810
	Color Coding LC-Duplex Adapter, orange	1 pcs	R820809
	Color Coding LC-Duplex Adapter, red	1 pcs	R820812

Adapter LC-Duplex PC, turquoise, ceramic MM, M, flangeless

12 pcs

FOTO	DESCRIPTION	PU	PRODUCT NO.
	Color Coding LC-Duplex Adapter, yellow	1 pcs	R820811
	Color Coding LC-Duplex Adapter, violet	1 pcs	R820814
	Color Coding LC-Duplex Adapter, anthracite	1 pcs	R820813
	45° Clip for LSH/LCd/SC adapter	10 pcs	R815789