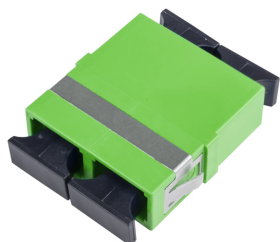


Adapter SC-Duplex APC, green, ceramic SM, C, flangeless

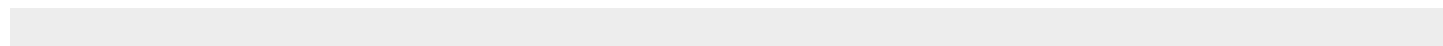
12 pcs



DESCRIPTION

SC-Duplex adapter flangeless with dust caps. Quick mounting clip integrated.

030.7015



TECHNICAL DATA

DESCRIPTION	VALUE/VALUE RANGE
Standard / norm	UL Listed according to IEC 61754-4
Connector class	adapter
Number of connectors (A)	1
Connector type (A)	SC-Duplex
Polishing plug (A)	APC 8°
Attenuation grade IL (A)	C
Connector color (A)	green
Sleeve material	ceramic
Adapter fastening method	end cap snap-in
Fiber type	singlemode (SM)

SC-Duplex adapter singlemode in acc. with IEC 61754-4. Flangeless body and integrated quick-mounting clip. Zirconia (ceramic) alignment sleeve, green plastic housing (singlemode) / UL 94 V-0, plastic dust covers. Adapter qualified in acc. with IEC 61753-1 for category U (uncontrolled environment).

Optical specifications:

- Delta insertion loss: ≤ 0.2 dB, testing method acc. to IEC 61300-3-4

Mechanical specifications:

- Mating cycles: min. 500
- Pull-out force: min. 70 N (per connector)