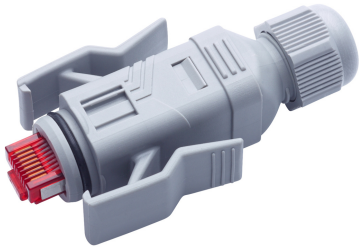


# Plug FM45 Cat.6A shielded or unshielded AWG 22 to 26 IP67 568A/B Type06 housing

10 pcs



## DESCRIPTION

- Field terminated RJ45 connector
- Termination of unshielded cable (UTP)
- Termination of shielded cable (STP)
- Approved for solid and stranded wire AWG 22 to AWG 26
- Optional visual colour coding clip
- Plug FM45 Cat.6<sub>A</sub>
- Plastic housing IP67 type06 with dust cap
- Copper foil
- Installation instructions

090.7434 / similar product

## TECHNICAL DATA

DESCRIPTION	VALUE/VALUE RANGE
Standard / norm	ISO/IEC 11801 IEC 60603-7-41/51 EN 50173 ANSI/TIA-568-C.2 PoE (IEEE 802.3af), PoEP (IEEE 802.3at), 4Ppoe (IEEE 802.3bt) IEC 60512-00-001/002
Protection class IP	IP 67 (correlates to NEMA 6P)
Category	Cat. 6 <sub>A</sub> ISO
Wiring diagram	T568A and T568B
Cable overall diameter	5.0 - 8.5mm
Number of wires	8
Wire type	Wire or stranded wire
Colour Coding	Yes, optional
Dust Protection	No
Cable Strain Relief	50 N
Re-termination	≥4 according IEC 60352-4 Re-terminations may be performed with wire of either larger or equal size than originally terminated.
Contact Surface	>1.2µm gold over 1.2µm nickel
Contact material	Bronze (CuSn6)
Pollution Degree	2 according to IEC 61010-1
UL Classification	UL94-V0
Wire diameter	Wire: 0.4 - 0.61mm Stranded wire: 0.12mm <sup>2</sup> - 0.32mm <sup>2</sup>

**Plug FM45 Cat.6A shielded or unshielded AWG 22 to 26 IP67 568A/B Type06 housing**

DESCRIPTION	VALUE/VALUE RANGE
-------------	-------------------

Approved wire diameter with insulation	1.6 mm / 0.063 in
Plug type twisted pair	RJ45

**MECHANICAL DATA**

DESCRIPTION	VALUE/VALUE RANGE
-------------	-------------------

Dimensions	77.0 mm x 22.8 mm x 38.4 mm / 3.031 in x 0.898 in x 1.512 in (W x H x D)
Color	Plug: transparent Housing: traffic gray (RAL 7042)
Material	Polycarbonate (plug) polyamide (housing)
Mating Cycles	> 750

**CLIMATIC DATA**

DESCRIPTION	VALUE/VALUE RANGE
-------------	-------------------

Operation temperature	-20 °C to +70 °C / -4 °F to +158 °F
-----------------------	-------------------------------------

**ELECTRICAL DATA**

DESCRIPTION	VALUE/VALUE RANGE
-------------	-------------------

Contact Resistance	Wire - IDC < 1mΩ Stranded wire - IDC < 5mΩ Signal contact - screen < 20mΩ
Input-Output Resistance	100 mΩ
Insulation Resistance	> 1GΩ (100V)
Dielectric Strength	Contact - contact >1000VDC Shield - contact >1500VDC, 1min.
Nominal Current	1.55A @20°C
Overvoltage Category	I according to IEC 60664-1

Field-terminated RJ45 plug connector, shielded and unshielded, Cat.6<sub>A</sub> 8-pole, terminated in IDC technology, suitable for solid or stranded wires, 2- to 8-wire conductors of diameter AWG 22 to AWG 26 (AWG 22/7 - 26/7), housing IP20, for cable diameters of 5.0mm to 8.5mm, coding in acc. with TIA 568A/B.