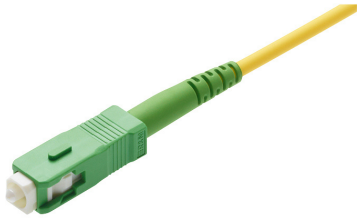


**Patch Cord SC APC - SC APC, green, G.657, C/1, Ø 3.0mm, 3 m**

1 pcs



**DESCRIPTION**

Both sides fitted with SC APC 8° connector.  
 Connector color: green.  
 Fiber: SM E9/125 G.657.A1, A2 and B2 (OS1, OS2).  
 Cable: Ø 3.0 mm, yellow.

090.2360 / similar product

**TECHNICAL DATA**

DESCRIPTION	VALUE/VALUE RANGE
Protection class IP	IP 20
Connector class	connector
Protection class IP (A)	IP 20
Number of connectors (A)	1
Protection class IP (B)	IP 20
Number of connectors (B)	1
Cable type	Patch cord, polarity A-B
Jacket material	LSZH
Cable jacket characteristics	Cable, metal-free Zero-halogen Flame-retardant
Cable overall diameter	Ø 3.0 mm (±0.15)
Connector type (A)	SC
Polishing plug (A)	APC 8°
Return loss grade RL (A)	1
Connector color (A)	green
Connector type (B)	SC
Polishing plug (B)	APC 8°
Return loss grade RL (B)	1
Connector color (B)	green
Fiber type	singlemode (SM)
Conductor type	tight buffer

**Patch Cord SC APC - SC APC, green, G.657, C/1, Ø 3.0mm, 3 m**

1 pcs

DESCRIPTION	VALUE/VALUE RANGE
-------------	-------------------

Fiber diameter	E9 / 125 µm
Patch cord type	simplex

**MECHANICAL DATA**

DESCRIPTION	VALUE/VALUE RANGE
-------------	-------------------

Cable length	3.0 m / 9 ft 10 in
Color	yellow

Patch cord with LSZH jacket, Ø 3.0 mm, yellow, singlemode singlemode acc. to G.657.A1, A2 and B2 plus OS1 and OS2 (backward compatible to G.652.A - D), 9/125 µm, length .

Mounted on both sides with SC connectors in acc. with IEC 61754-4. Zirconia (ceramic) ferrule with an angled polish APC 8° endface geometry, connectors tuned in accordance with IEC 61755-3-2 and qualified in acc. with IEC 61753-1 for category C (controlled environment). Green connector housing (singlemode), material PBT / UL 94 V-0, green strain relief, material TPE / UL 94 V-0 and plastic dust cover.

Optical specifications (random mated):

Performance acc. to IEC 61753-1 (Table A.12):

Insertion loss (IL) Grade C for 97% of the tested specimen: ≤ 0.50 dB / typical ≤ 0.25 dB

Return loss (RL) Grade 1: ≥ 60 dB (typical ≥ 80 dB)

Mechanical specifications:

Mating cycles: delta IL < 0.2 dB after 500 mating cycles

Pull-out force patch cord: ≥ 100 N

**OPTIONAL ACCESSORY**

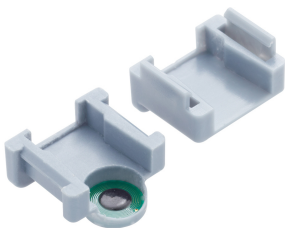
FOTO	DESCRIPTION	PU	PRODUCT NO.
------	-------------	----	-------------



Boot 90° R30

12 pcs

R505756



R&MinteliPhy RFID clip pair SC (10 pairs)

1 pcs

R809351