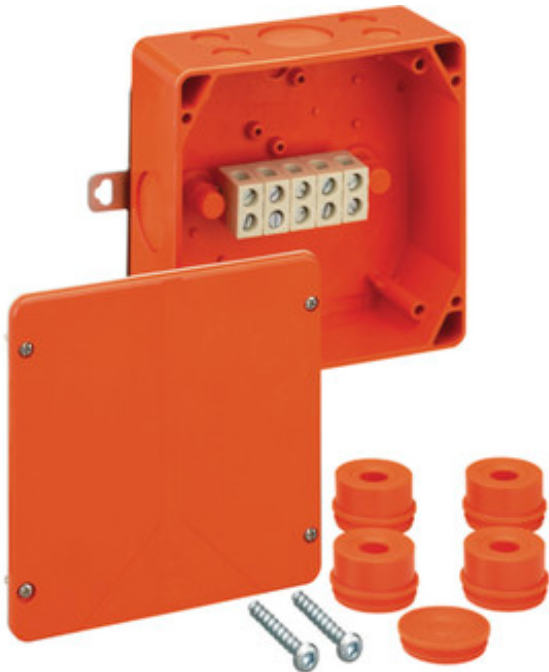




CABLE JUNCTION BOX

WKE 4 - 5 x 16²



WKE 4 - 5 x 16²

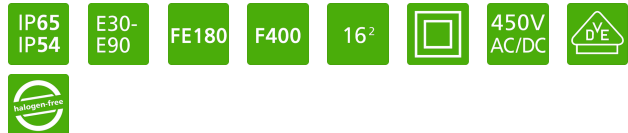
Cable junction box

CUSTOMIZABLE

165 x 165 x 76 mm
Article number: 86050401

Cable junction and connection box with IP54 / IP65 certified acc. EN 60670, with intrinsic fire resistance E30 – E90 acc. DIN 4102 Part 12, with isolation integrity FE180 acc. IEC 60331-11 as well as functional life F400 acc. EN 12101, halogen-free housing made from special duroplastic, terminals made from high temperature-proof special ceramics, rapid mounting thanks to external brackets and wall + ceiling attachment set D6

Connection box 5-pole 1.5 - 16 mm², Junction box 5-pole 1.5 - 6 mm², Number of conductors per clamping point: 10 x 1.5² / 8 x 2.5² / 4 x 4² / 4 x 6² / 2 x 10² / 2 x 16², Accessories supplied: Drilling template, wall + ceiling attachment set D6, 4 attachment bushes M40, seal range 17 - 30 mm, 1 blanking plug M40



Technical data

Measures

Width:	165 mm
Length:	165 mm
Height:	76 mm

Material

Base:	Duroplastic
Cover:	Duroplastic
Sealing:	thermoplastic elastomer
Cover screw:	stainless steel V2A

Accessory

AST M20-or

VST M32-or

AST M32-or

KVR M40-MGM/or

VST M20-or

KVR M32-MGM/or

KVR M20-MGM/or

KVR M25-MGM/or

VST M25-or

AST M25-or

AST M20-or

VST M32-or



CABLE JUNCTION BOX

WKE 4 - 5 x 16²

Other attributes

Color:	orange
Equipment:	Terminal
Entries:	12
Rated cross section:	16 mm ²
Tackable:	No
Rated insulation voltage AC:	450 V
Explosion safety:	none
Fire protection:	E 90
sealable:	No
Heavy metals-free:	Yes
PVC-free:	Yes
Silicone-free:	Yes
Ingress protection:	IP65 - acc. EN 60529 / DIN VDE 0470-1
Weatherproof:	Yes

AST M32-or

KVR M40-MGM/or

VST M20-or

KVR M32-MGM/or

KVR M20-MGM/or

KVR M25-MGM/or

VST M25-or

AST M25-or

Environmental attributes

Ambient temperature (min.):	-25 °C
Ambient temperature (max.):	40 °C
Ambient temperature (24 h):	35 °C
Max. rel. humidity at 25° C (short Therm):	95%
Max. rel. humidity at 40° C:	50%