

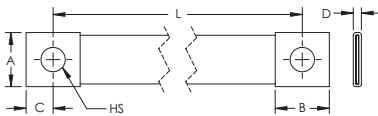
CPI Grounding and Bonding Braid, Stainless Steel – CPI50-300-12 (554346)



High-quality CPI stainless steel grounding and bonding braids can be installed in extremely corrosive environments, like offshore applications or coastal applications. The full range of CPI braids are ideal for applications using stainless steel pipe or tanks, like the food and beverage industry, building industry, transportation, oil and chemical industry.

ERIFLEX offers 316L stainless steel braids and lugs, one of the highest resistant stainless steel options on the market. Our proprietary manufacturing process has been optimized to provide the best braiding, crimping, cutting and punching.

- Superior abrasion, corrosion, chemical and UV resistance make CPI braids ideal for outdoor applications
- Great for expansion joints where constant movement requires a flexible and durable solution
- Ready to use out of the box, eliminates the need for cutting, stripping, crimping and punching
- Quick and easy to install
- Resistant to vibration and fatigue, reducing maintenance
- Will not rust or discolor, so the appearance will never fade or change
- Excellent electrical contact
- No additional lugs or terminals needed
- Non-magnetic material
- Recommended by the EMC/EMI directives
- Performs to the class C5 (very high) category as per ISO® 12944-2
- GOST compliant
- RoHS compliant



Part Number	CPI50-300-12
Article Number	554346
Material	Stainless Steel 316L [EN 1.4404]
Certification Details	UL® 467
Complies With	IEC® 60439.1 IEC® 61439.1
Cross Section	50 mm ²
Length [L]	300 mm
Hole Size [HS]	13 mm
A	30 mm
B	30 mm
C	15 mm
D	5 mm
Unit Weight	0.17 kg

Part Number	CPI50-300-12
Certifications	ABS 13-HS1018106-1-PDA CE cULus EAC 7413000009 (Russian Federation) RoHS
Standard Packaging Quantity	10 pc
UPC	78285679687
EAN-13	3479775543468

ABS is a registered certification mark of American Bureau of Shipping. IEC is a registered trademark of the International Electrotechnical Commission. ISO is a registered trademark of International Organization for Standardization. UL, UR, cUL, cUR, cULus and cURus are registered certification marks of UL LLC.

WARNING

Pentair products shall be installed and used only as indicated in Pentair's product instruction sheets and training materials. Instruction sheets are available at erico.pentair.com and from your Pentair customer service representative. Improper installation, misuse, misapplication or other failure to completely follow Pentair's instructions and warnings may cause product malfunction, property damage, serious bodily injury and death and/or void your warranty.

© 2016 Pentair All rights reserved
Pentair, CADDY, CADWELD, CRITEC, ERICO, ERIFLEX, ERITECH and LENTON are owned by Pentair or its global affiliates.
All other trademarks are the property of their respective owners. Pentair reserves the right to change specifications without prior notice.