

EPIC® H-BE 48 Screw termination

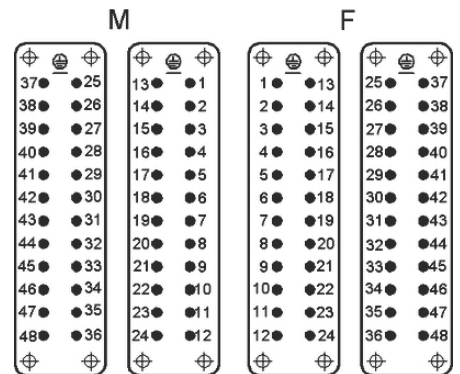
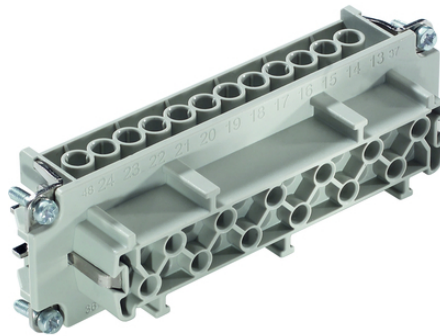
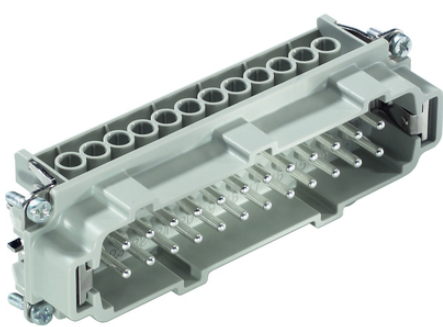
The proven standard inserts for easy assembly

new short description because of existing CZ translation for product (id) 142574

Info

Proven screw for easy installation

Screw, crimp, cage clamp and Push-In version - freely combinable



Temperature-resistant



Robust



Rail



Industrial machinery and plant engineering



Automation & fältinstallation



Benefits

Standard inserts with screw, crimp cage clamp and Push-In termination

The EPIC® H-BE series is suitable for applications that require a reliable connection when working with high voltages and currents

Railway applications

- Fire protection on railway vehicles: Test according EN 45545-2. Requirement sets R22 and R23. Hazard level HL1, HL2 and HL4

Last Update (21.10.2016)

©2016 Lapp Group - Technical changes reserved

Product Management www.lappkabel.de

You can find the current technical data in the corresponding data sheet.

PN 0456 / 02_03.16

EPIC® H-BE 48 Screw termination

Application range

Mechanical engineering
Plastics industry
Light & sound technology
Railway applications / vehicle construction

Technical Data

Classification:	ETIM 5.0 Class-ID: EC000438 ETIM 5.0 Class-Description: Contact insert for industrial connectors
Rated voltage (V):	IEC: 500 VUL: 600 VCSA: 600 V
Rated impulse voltage:	6 kV
Rated current (A):	IEC: 16 A UL: 16 A CSA: 16 A
Degree of soiling:	3
Contact resistance:	< 2 mOhm
Contacts:	Copper alloy, hard silver-plated
Number of contacts:	48 + PE
Termination methods:	Screw termination: 0.5 - 2.5 mm ²
Stripping length (mm):	8
Cycle of mechanical operation:	100
Temperature range:	-40°C to +100°C, short-term up to +125°C

Note

Photographs are not to scale and do not represent detailed images of the respective products.
* Prices are net prices without VAT and surcharges. Sale to business customers.

**EPIC® H-BE 48 Screw termination**

Article number	Article description	Contact type	Wire protection	Number of operating contacts	L	L1	A
H-BE 48 screw termination							
10204000	EPIC® H-BE 24 SS 25-48	male	yes	25 - 48	111	104	98
10205000	EPIC® H-BE 24 BS 25-48	female	yes	25 - 48	111	104	98
10204100	EPIC® H-BE 24 SS 25-48	male	25 - 48	111	104	98	
10205100	EPIC® H-BE 24 BS 25-48	female	25 - 48	111	104	98	

Last Update (21.10.2016)

©2016 Lapp Group - Technical changes reserved

Product Management www.lappkabel.deYou can find the current technical data in the corresponding data sheet.
PN 0456 / 02_03.16