

EPIC® H-BE 24 Screw termination

The proven standard inserts for easy assembly

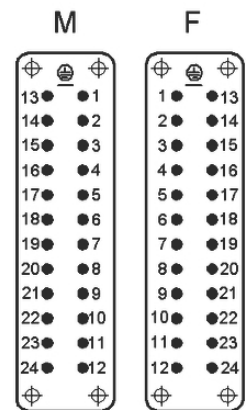
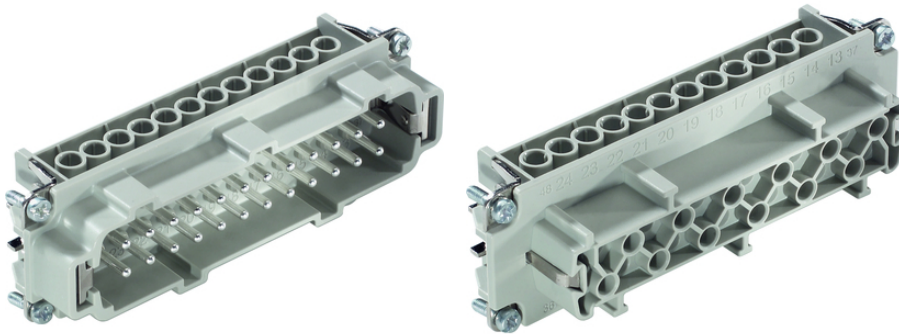
new short description because of existing CZ translation for product (id) 591

Info

Proven screw for easy installation

Screw, crimp, cage clamp and Push-In version - freely combinable

Also as EPIC® H-BE 48 available



Temperature-resistant



Robust



Rail



Industrial machinery and plant engineering



Automation & field installation



EPIC® H-BE 24 Screw termination

Benefits

Railway applications

- Fire protection on railway vehicles: Test according EN 45545-2. Requirement sets R22 and R23. Hazard level HL1, HL2 and HL4

Standard inserts with screw, crimp cage clamp and Push-In termination

The EPIC® H-BE series is suitable for applications that require a reliable connection when working with high voltages and currents

UL tested for application in control cabinets according UL 508 / UL 2237

Application range

Mechanical engineering

Plastics industry

Light & sound technology

Railway applications / vehicle construction

Technical Data

Classification:	ETIM 5.0 Class-ID: EC000438 ETIM 5.0 Class-Description: Contact insert for industrial connectors
Rated voltage (V):	IEC: 500 VUL: 600 VCSA: 600 V
Rated impulse voltage:	6 kV
Rated current (A):	IEC: 16 A UL: 16 A CSA: 16 A
Degree of soiling:	3
Contact resistance:	< 2 mOhm
Contacts:	Copper alloy, hard silver-plated
Number of contacts:	24 + PE
Termination methods:	Screw termination: 0.5 - 2.5 mm ²
Stripping length (mm):	8
Cycle of mechanical operation:	100
Temperature range:	-40°C to +100°C, short-term up to +125°C

Note

Photographs are not to scale and do not represent detailed images of the respective products.

* Prices are net prices without VAT and surcharges. Sale to business customers.



EPIC® H-BE 24 Screw termination

Article number	Article description	Contact type	Wire protection	Number of operating contacts	L	L1	A
H-BE 24 screw termination							
10196000	EPIC® H-BE 24 SS	male	yes	1 - 24	111	104	98
10197000	EPIC® H-BE 24 BS	female	yes	1 - 24	111	104	98
10196100	EPIC® H-BE 24 SS	male	1 - 24	111	104	98	
10197100	EPIC® H-BE 24 BS	female	1 - 24	111	104	98	

Last Update (21.10.2016)

©2016 Lapp Group - Technical changes reserved

Product Management www.lappkabel.de

You can find the current technical data in the corresponding data sheet.
PN 0456 / 02_03.16

EPIC® H-BE 24 Screw termination

