

EPIC® H-BE 16 Screw termination

The proven standard inserts for easy assembly

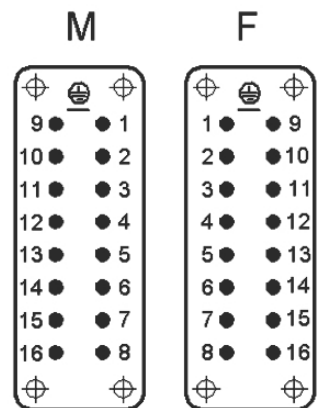
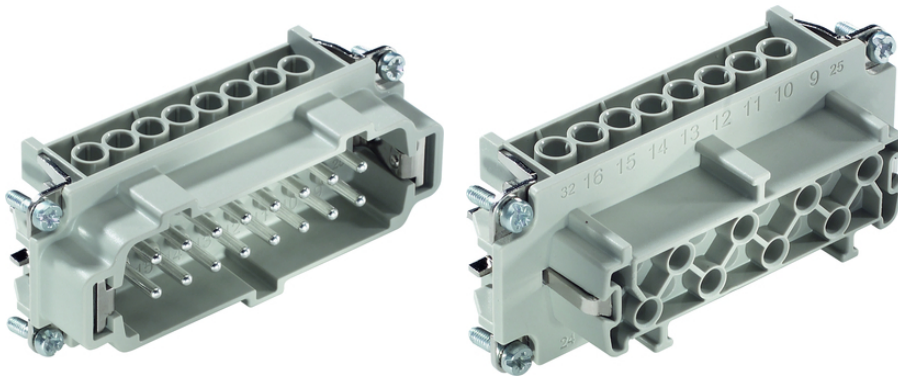
new short description because of existing CZ translation for product (id) 549

Info

Proven screw for easy installation

Screw, crimp, cage clamp and Push-In version - freely combinable

Also as EPIC® H-BE 32 available



Temperature-resistant



Robust



Rail



Industrial machinery and plant engineering



Automation & fältinstallation



EPIC® H-BE 16 Screw termination

Benefits

Standard inserts with screw, crimp cage clamp and Push-In termination

The EPIC® H-BE series is suitable for applications that require a reliable connection when working with high voltages and currents

Railway applications

- Fire protection on railway vehicles: Test according EN 45545-2. Requirement sets R22 and R23. Hazard level HL1, HL2 and HL4

UL tested for application in control cabinets according UL 508 / UL 2237

Application range

Mechanical engineering

Plastics industry

Light & sound technology

Railway applications / vehicle construction

Technical Data

Classification:	ETIM 5.0 Class-ID: EC000438 ETIM 5.0 Class-Description: Contact insert for industrial connectors
Rated voltage (V):	IEC: 500 VUL: 600 VCSA: 600 V
Rated impulse voltage:	6 kV
Rated current (A):	IEC: 16 A UL: 16 A CSA: 16 A
Degree of soiling:	3
Contact resistance:	< 2 mOhm
Contacts:	Copper alloy, hard silver-plated
Number of contacts:	16 + PE
Termination methods:	Screw termination: 0.5 - 2.5 mm ²
Stripping length (mm):	8
Cycle of mechanical operation:	100
Certifications:	Certified production control: VDE-REG. no.: B437 UL-tested: UL File Number: E75770 and E483837
Temperature range:	-40°C to +100°C, short-term up to +125°C

Note

Photographs are not to scale and do not represent detailed images of the respective products.

* Prices are net prices without VAT and surcharges. Sale to business customers.



EPIC® H-BE 16 Screw termination

Article number	Article description	Contact type	Wire protection	Number of operating contacts	L	L1	A
H-BE 16 screw termination							
10194000	EPIC® H-BE 16 SS	male	yes	1 -16	84.5	77.5	71
10195000	EPIC® H-BE 16 BS	female	yes	1 -16	84.5	77.5	71
10194100	EPIC® H-BE 16 SS	male	1 -16	84.5	77.5	71	
10195100	EPIC® H-BE 16 BS	female	1 -16	84.5	77.5	71	

Last Update (21.10.2016)

©2016 Lapp Group - Technical changes reserved

Product Management www.lappkabel.de

You can find the current technical data in the corresponding data sheet.
PN 0456 / 02_03.16

EPIC® H-BE 16 Screw termination

