


U.I. Lapp GmbH	PRODUCT INFORMATION	
	SKINDICHT® KU-M	12.09.2012

Enables the use of cable glands with smaller connection threads than the existing threaded holes



Application range

Machines
Devices
Housings

Design

Metric connection thread acc. to EN 50262

Remark

Photographs are not to scale and do not represent detailed images of the respective products.

Technical Data

Colour delivered:

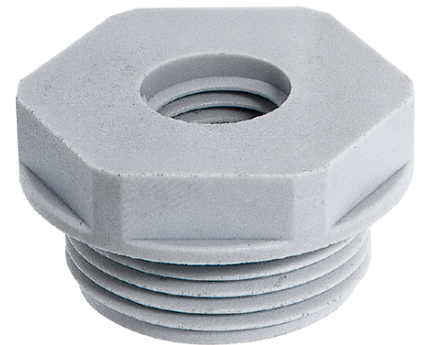
Light grey (RAL 7035)

Material:

Polyamide, glass fibre-reinforced

Temperature range:

-40°C to +100°C



Product Management	Document: LAPP_PRO1032EN.pdf	1 / 2
--------------------	------------------------------	-------

SKINDICHT® KU-M

12.09.2012

Part number	Thread/ male M1	Thread/ female M2	SW (mm)	Pieces / PU
SKINDICHT® KU-M light grey				
52104505	16 x 1.5	12 x 1.5	22	100
52104470	20 x 1.5	12 x 1.5	24	100
52104504	20 x 1.5	16 x 1.5	24	100
52104472	25 x 1.5	12 x 1.5	29	100
52104473	25 x 1.5	16 x 1.5	29	100
52104474	25 x 1.5	20 x 1.5	29	100
52104475	32 x 1.5	12 x 1.5	36	50
52104476	32 x 1.5	16 x 1.5	36	50
52104477	32 x 1.5	20 x 1.5	36	50
52104478	32 x 1.5	25 x 1.5	36	50
52104479	40 x 1.5	16 x 1.5	46	50
52104480	40 x 1.5	20 x 1.5	46	50
52104481	40 x 1.5	25 x 1.5	46	25
52104482	40 x 1.5	32 x 1.5	46	25
52104483	50 x 1.5	20 x 1.5	55	5
52104484	50 x 1.5	25 x 1.5	55	5
52104485	50 x 1.5	32 x 1.5	55	5
52104486	50 x 1.5	40 x 1.5	55	5
52104487	63 x 1.5	25 x 1.5	68	5
52104488	63 x 1.5	32 x 1.5	68	5
52104489	63 x 1.5	40 x 1.5	68	5
52104469	63 x 1.5	50 x 1.5	68	5