

U.I. Lapp GmbH	PRODUCT INFORMATION	
	SKINDICHT® EKU-M	12.09.2012

Enables the use of cable glands with larger connection threads than the existing threaded holes

Assembling with a wrench

Supporting surface for spanner means scratches on the housing are avoided



Application range

Machines

Devices

Housings

Design

Metric connection thread acc. to EN 50262

Remark

Photographs are not to scale and do not represent detailed images of the respective products.

Technical Data

Colour delivered:

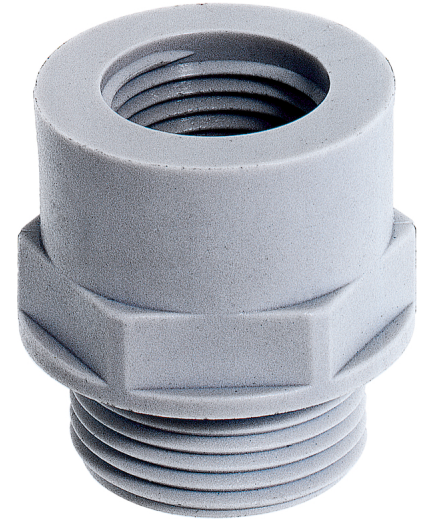
Light grey (RAL 7035)

Material:

Polyamide, glass fibre-reinforced

Temperature range:

-40°C to +100°C



Product Management	Document: LAPP_PRO1036EN.pdf	1 / 2
--------------------	------------------------------	-------



Part number	Thread/ male M1	Thread/ female M2	SW (mm)	Pieces / PU
SKINDICHT® EKU-M				
52100300	12 x 1.5	16 x 1.5	20	100
52100301	16 x 1.5	20 x 1.5	24	100
52100302	20 x 1.5	25 x 1.5	29	100
52100303	25 x 1.5	32 x 1.5	36	50
52100304	32 x 1.5	40 x 1.5	46	25
52100305	40 x 1.5	50 x 1.5	55	10
52100306	50 x 1.5	63 x 1.5	68	10