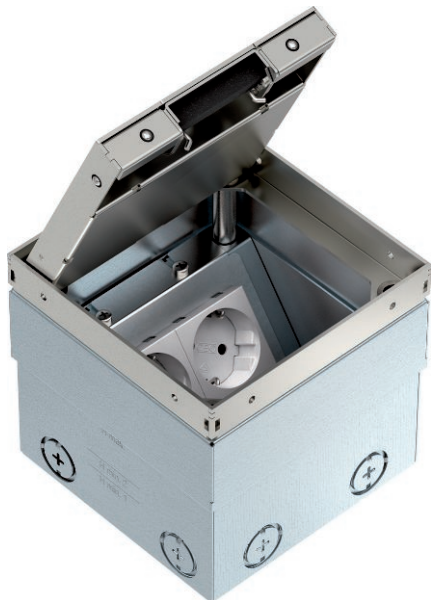


Technical data sheet

UDHOME2 floor socket, with floor covering recess,
double VDE, stainless steel
Art.-Nr. 7368324



Square floor socket for use in dry-care cavity and screed floors. Installation housing with pre-marked insertion openings for pipes (M20/M25). Cover adjustable to top edge of floor covering using four height adjustment supports. The minimum installation depth is 110 mm, the height-adjustment range is + 25 mm.

Frame and cover made of stainless steel and visible in the floor covering.



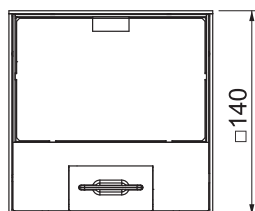
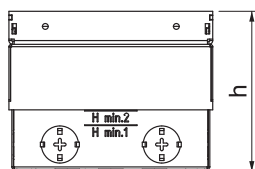
A2 Stainless steel, rustproof

Additional product text, instruction The scope of delivery contains a double protective contact socket. Up to two modular data sockets can be installed in the optional mounting support.

Master data

Item no.	7368324
Type	UDHOME2 GV15V
Description 1	Floor socket
Description 2	with double VDE socket
Material	Stainless steel, material A2
Material symbol	A2
Smallest sales unit	1,00 Piece
Weight	230,00 kg/100 pc.

Technical data



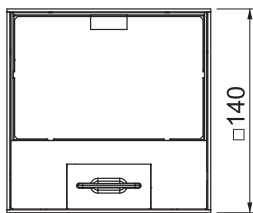
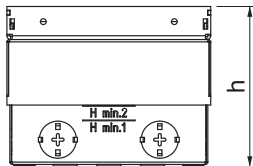
Length	140,00 mm
Width	140,00 mm
Height	110,00 mm
Dimension h	110,00 mm
Number of installable devices	2,00
Floor covering thickness	15,00 mm
Floor covering protection frame	<input type="checkbox"/>
Floor care	Dry
Version for	Square
Application when used	6.101.1 Dry floor care
Application when unused	6.101.1 Dry floor care
Floor height	110-135 mm
Device support to accept mounting boxes	<input type="checkbox"/>
Suitable for wet care	<input type="checkbox"/>
Suitable for screed-flush closed underfloor ducts	<input type="checkbox"/>
Suitable for screed-covered underfloor ducts	<input type="checkbox"/>
Suitable for raised floor installation	<input checked="" type="checkbox"/>
Suitable for cavity floor installation	<input checked="" type="checkbox"/>

Technical data sheet

UDHOME2 floor socket, with floor covering recess,
double VDE, stainless steel
Art.-Nr. 7368324



Technical data



With floor covering recess	<input checked="" type="checkbox"/>
Nominal size for device installation units	2
Standard	EN 50085-2-2
Opening mechanism	Handle
Frame version	Floor covering contact edge
Schwerlastausführung	<input type="checkbox"/>
Protection rating (IP) when used	IP20
Protection rating (IP) when unused	IP40
Protection rating IK code	IK10
Approvals	VDE VDE
Vertical load, small area	6.102.7 (to 3,000 N)