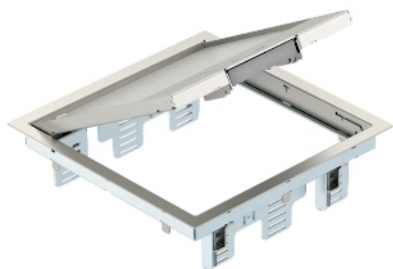


GES9M-2 service outlet with handle clamp



Up to 9 installation devices with 50 mm central plate can be inserted.
Service outlet with handle clamp, 3-compartment, for the installation of MT9 mounting support. 3 type APMT5 cover plates can be installed.
Service outlet with handle clamp for up to 12 individual Modul 45 devices in 3 UT4 universal supports, use in duct systems and system floors.
Locking ladder made of galvanised sheet steel

Type	Material symbol	Floor covering thickness mm	Pack. pcs	Weight kg/100 pcs.	Item No.
GES9M-2 10U	V2A	10	1	360,000	7405371

V2A Stainless steel, grade 304

Dimensions

