

LEDDim Smart 3.0

DIGITAL TRAILING EDGE DIMMER



220-240V, 50/60Hz, 3-400VA, -25°C to 35°C, Operating frequency: 2402-2480MHz, Maximum radio-frequency output power: 10dBm

SG Smart

GET IT ON Google Play

Download on the App Store

10m open air

0.5 - 2.5 mm²

~6 mm

3 - 400VA**

L N

* P L N N

⌚ 0-1s

⌚ >1s

⚠ L P

Max 50m

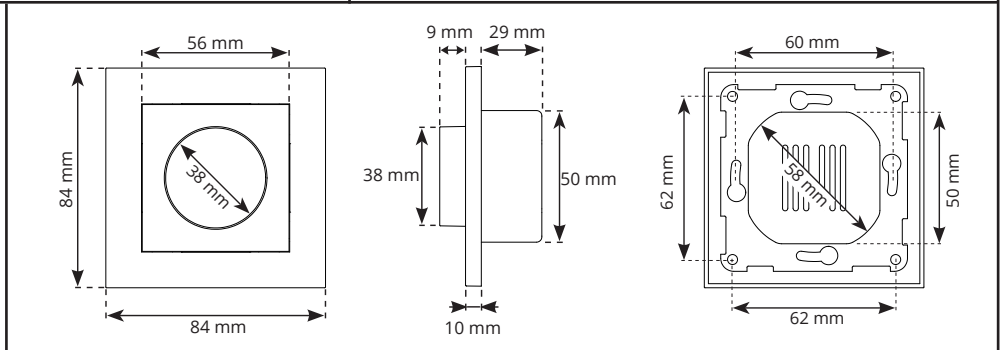
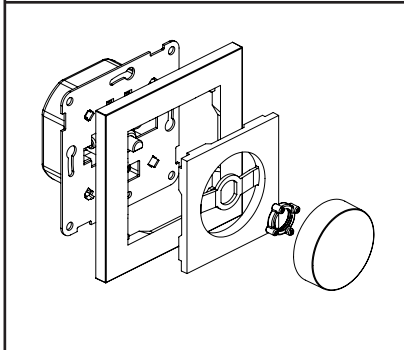
Min. Max.

0% 100%

①

②

NO: Minimum dimmenivåjustering
 DA: Minimum justering af dæmpningsniveau
 SE: Minsta justering av dimningsnivå
 EN: Minimum dimming level adjustment
 FR: Réglage du niveau de gradation minimal
 NL: Regelbaar niveau van minimale dimmingsgraad
 DE: Anpassung der minimalen Dimmstufe
 FI: Minimi himmennystaso



NORWAY
 SG Armaturen AS
 Skytterheia 25
 N-4790 Lillesand

SWEDEN
 SG Armaturen AB
 Tel: +46 31 81 71 10
 info@sg-ab.se
 www.sg-ab.se

GERMANY
 SG Leuchten GmbH
 Tel: +49 40 23 99 44 59
 info@sg-leuchten.de
 www.sg-leuchten.de

FRANCE
 SG Lighting SA/NV
 Tel: +33(0) 4 94 93 00 00
 info.france@sglighting.fr
 www.sglighting.net

SWITZERLAND
 SG Leuchten SA
 Tel: + +41 44 868 20 00
 info@sg-leuchten.ch
 sg-leuchten.ch

Tel: +47 37 50 03 00
 firmapost@sg-as.no
 www.sg-as.no

DENMARK
 SG Armaturen A/S
 Tel: +45 70 70 72 13
 info@sg-as.dk
 www.sg-as.dk

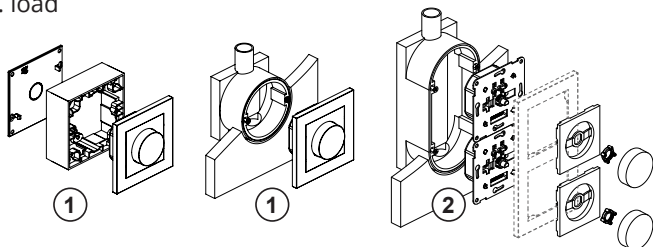
FINLAND
 SG Armaturen Oy
 Tel: +358 02 07 30 39 60
 info@sg-oy.fi
 www.sg-oy.fi





BENELUX
 SG Lighting SA/NV
 Tel: +32(0) 15 20 72 71
 info.benelux@sglighting.net
 www.sglighting.net

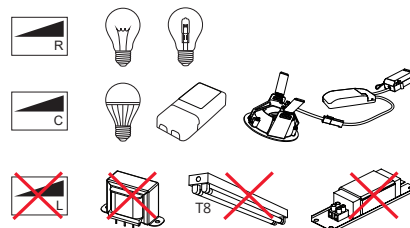
INTERNATIONAL
 SG Lighting Co Ltd.
 Tel: +86 769 88 49 20 88
 cindy@sgdgc.com
 www.sg-as.com

Rev: 17.12.2025

Max. load



Load type	 R	 C	 R+C	 L
1: Single dimmer	Max. 400W	Max. 320W	Max. 320W	X
2: Two or more dimmers	Max. 300W/pc.	Max. 240W/pc.	Max. 240W/pc.	X



NO: Kan kun installeres og vedlikeholdes av en registrert installasjonsvirksomhet.

DK: Må kun installeres og vedligeholdes af uddannet elektriker.

SE: Skall installeras och underhållas av behörig elektriker.

EN: Only to be installed and maintained by an authorized electrician.

FR: Doit être installé et maintenu par un électricien qualifié.

NL: Mag alleen geïnstalleerd en onderhouden worden door een bevoegde elektricien.

DE: Dieses Produkt darf nur durch autorisiertes Personal (z.B. Elektro-Installateur)

angeschlossen, in Betrieb genommen und gewartet werden.

FI: Asentaa ja huoltaa saa vain valtuutettu sähköasentaja

NO: Skru av strømmen før montering.

DK: Sluk for strømmen inden montering.

SE: Stäng av strömmen innan montering.

EN: Turn off power before installing.

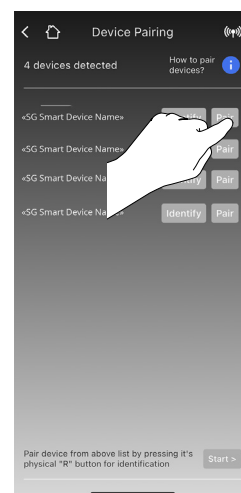
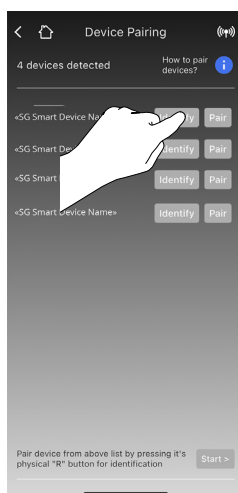
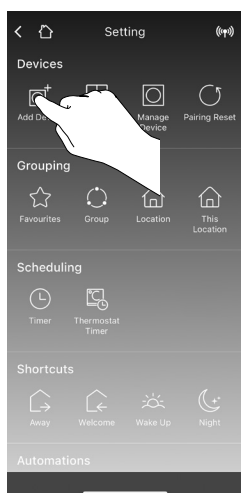
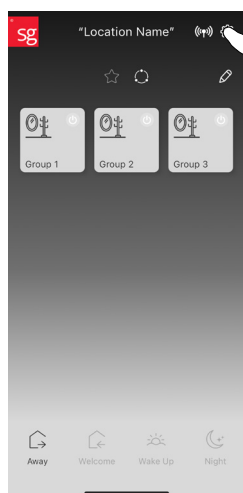
FR: Couper le courant avant l'installation.

NL: Stroom uitschakelen voor u het toestel installeert.

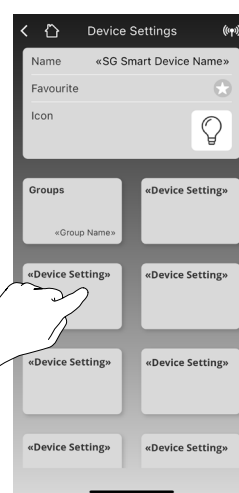
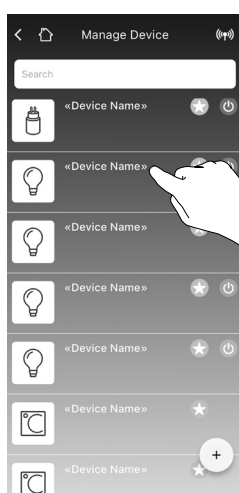
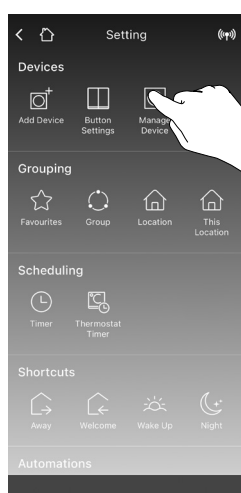
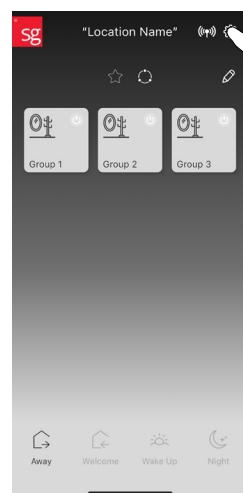
DE: Vor Installationsarbeiten den Strom abschalten.

FI: Sammuta virta ennen kytkemistä

Pairing



Settings



Supports modes:

Dimming
ON/OFF
Countdown