

# VDII 10A



## Specifications

ETI Code	002342004
Description	VDII 10A
Class name	Gauge piece
To use with	VDII for fuse base E27
Product group accessories	Fuse base D
Type accessories	Gauge piece

Online product page 

## Other documentation

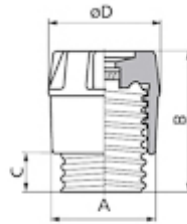
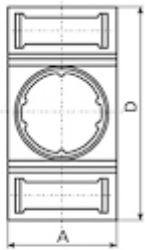


[Technical data catalogue](#)  
[3D Model](#)  
[2D File](#)  
[Instruction manual](#)  
[CE declaration](#)  
[Eplan file](#)

## ETIM international classification

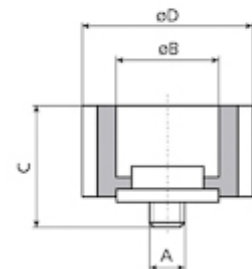
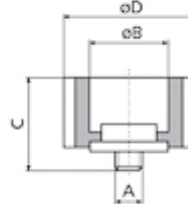
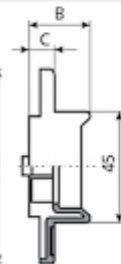
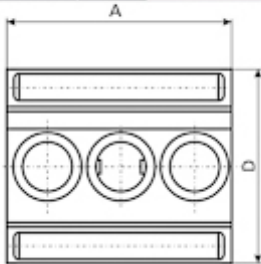
Classification	EC000085
Class name	D-system screw adapter
Construction size	DII
Rated current	10A
Colour code	Red

# Dimension drawing



	$I_n$ [A]	A	B	C	D
EZN, EZV	25	40	24	10,8	80
EZN, EZV	63	49	21	9	80

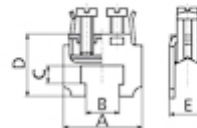
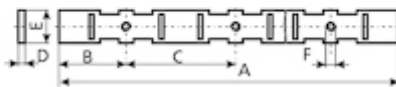
	A	B	C	D
KDI	23	35	10	26
KDII	34	44	12	35
KDIII	43	44	12	43



	A	B	C	D
EZN, EZV 25/3	121	24	10,8	80
EZN, EZV 63/3	148	21	9	80

$I_n$ [A]	A	B	C	D
2	3/16"	6,5	17	24
4	3/16"	6,5	17	24
6	3/16"	6,5	17	24
10	3/16"	8,5	17	24
16	3/16"	10,5	17	24
20	3/16"	12,5	17	24
25	3/16"	14,5	17	24

$I_n$ [A]	A	B	C	D
35	3/16"	16,5	17	30
50	3/16"	18,5	17	30
63	3/16"	20,5	17	30



	$I_n$ [A]	A	B	C	D	E	F
EZR	25	1000	32	52	3	16	3/16"
EZR	63	1000	38	62	3	16	3/16"

for cross section [mm <sup>2</sup> ]	A	B	C	D	E
16	25	12,5	3,5	17	7,3
35	28	12,5	6,5	21,5	12,6